

ice

South East
England

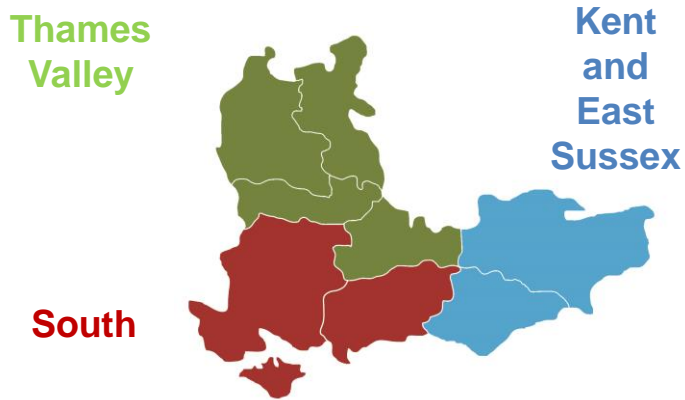


South Branch meeting

2nd May 2019

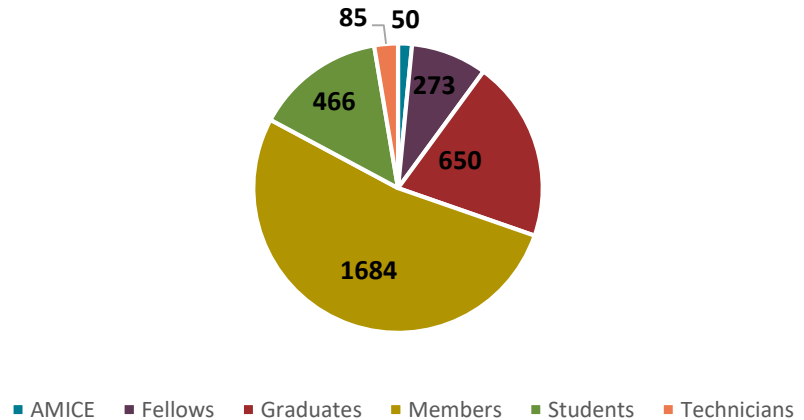
ICE – South Branch

South Branch is one of three branches in **ICE South East England**.



3,208 members in South Branch out of **10,392 members** in South East England.

South Branch Members by Grade



ICE – South East Regional Committee

South East England Regional Chair	Nick Gray
Past Regional Chair	Stewart Biggs
KES Branch Chair	Martin Qualters
South Branch Chair	Marc Griffin
TV Branch Chair	Richard Salter
Regional Hon Secretary	Tim Kermode
Diversity Champion	Position Vacant
Regional Chair's Apprentice	Position Vacant
Vice-Chair Informing Opinion	Steve Dellow
Vice-Chair Professionalism & Knowledge	Siu Fa Ng
Vice-Chair Education & Inspiration	James Bingham
Regional Member of ICE Council	Norman Brent
General Council Member	Steve Dellow
Junior Regional Hon Treasurer	Charlie Spedding
Regional Hon Treasurer	Richard Sykes

ICE – South Branch Committee

Marc Griffin	Branch Chair 2018-19
Nick Gray	Immediate Past Chair
David Allen	Senior Vice Chair
Norman Brent	Regional Member of Council
Vacant	Informing Opinion Lead
Brendan Dowd	Education & Inspiration Lead
Brian Hillman	Professionalism & Knowledge Lead
Vacant	Diversity Lead
Nathanial Pickett	Communications Lead
Vacant	Informing Opinion Lead
Tim Kermode	Honorary Secretary
Richard Sykes	Honorary Treasurer

Emily Duncombe	Committee Member
Alexander Lee	Committee Member
Edwin Yau	Committee Member
Philip Penman	Committee Member
John Berry	Maritime Group Chair
Gary Courtnadge	Retired Members' Group
Vacant	Transport Group Chair
Joel Smethurst	Geotechnical Group Chair
Nick Gallin	IoW Representative
Lee Woods	Portsmouth Uni Liaison
Christian O'Brien	GSA Chair (Hampshire & IoW)
Krish Mistry	GSA Chair (Brighton & Gatwick)
Vacant	Technician Member

Maritime SIG meeting

9th May 2019 – Poole

A Modern Alliance for a Modern Lifeboat Service



Presidential Visit

18 July 2019

Dinner on The Princess Caroline from
Southampton



Powering the South

Maxine Narburgh
Jamie Gordon
Ollie Pendered

Greater South East Energy Hub & the South2East Local Energy Strategy

ICE South Branch – Powering the South
2nd May 2019

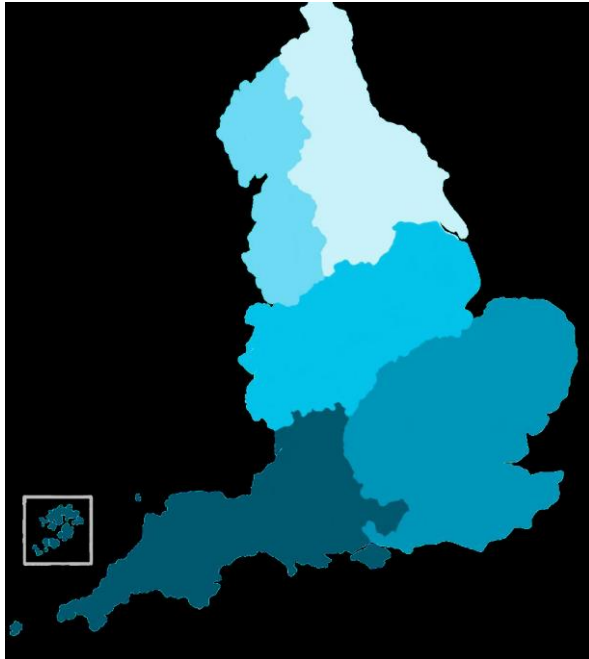
Maxine Narburgh – Regional Hub Manager



Overview

- ❖ The national Energy Hubs
- ❖ Local Enterprise Partnerships – Local Energy Strategies
- ❖ South2East Local Energy Strategy
- ❖ Project pipeline development

Local Energy Hubs: The National Picture



- ❖ New government funded programme, funded by BEIS
- ❖ **Greater South East**
- ❖ **South West**
- ❖ **Midlands**
- ❖ **North West**
- ❖ **North East**

- ❖ To increase public sector capacity to bring forward low carbon energy schemes
- ❖ Arms length from BEIS, with flexibility to agree objectives that align with local needs

Energy Hub Objectives

Core

- ❖ Increase the number, quality and scale of local energy projects being delivered;
- ❖ Raise local awareness of the opportunity for and benefits of local energy investment;
- ❖ Enable local areas to attract private and/or public finance for energy projects;
- ❖ Identify options for the GSE Energy Hub model to be financially self-sustaining.

Working on behalf of all LEP areas and their member LAs

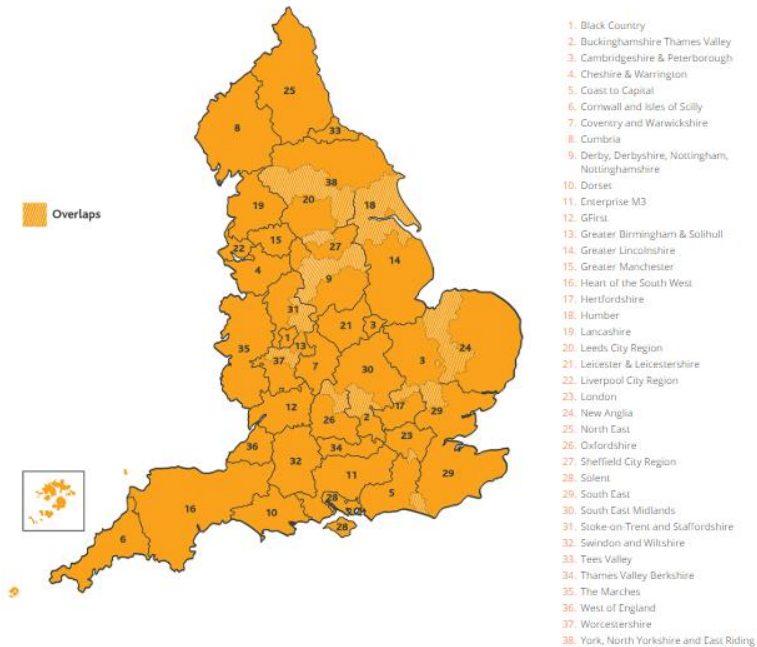
Rural Community Energy Fund – June 2019

- ❖ Increase uptake of RCEF scheme (previously delivered by WRAP)
- ❖ Increase communities engaged
- ❖ Jobs created, volunteers engaged, MW produced
- ❖ Peer-to-peer network

Research Projects

- ❖ Toolkits for local authorities, template documents, studies, pilots

Governance & Oversight



- ❖ The work of Local Energy Hubs is governed by representatives from each LEP in the region
- ❖ Management boards will oversee the allocation of resources to strategic activities that align with locally determined objectives
- ❖ Local Energy Hubs have Local or Combined Authorities as accountable bodies for funding, and public sector representatives on boards
- ❖ LEPs have been identified as having an important role to play when it comes to clean growth

LEP Energy Strategies

- ❖ All LEPs have produced or updated Energy Strategies in 2018 (Some yet to be published)
- ❖ Aligned with the **Clean Growth Strategy** → Should be informative to **Local Industrial Strategy**
- ❖ Local Energy Hubs have been created to support those investment opportunities identified in strategies
 - ❖ Identify energy opportunities and challenges across each LEP area, for power, heat and transport
 - ❖ Set out energy demand and carbon emissions trajectories
 - ❖ Assess the economic potential associated with the energy transformation and inform Local Industrial Strategies
 - ❖ Substantial changes to the energy system regulatory context
- ❖ Local Energy Hubs will collaborate across boundaries

GSE Energy Hub: Strategies

- BTVLEP - Buckinghamshire Thames Valley Local Enterprise Partnership
- C2CLEP - Coast to Capital Local Enterprise Partnership
- CPCA - Cambridgeshire & Peterborough Combined Authority
- EM3LEP - Enterprise M3 Local Enterprise Partnership
- GLA - Greater London Authority
- HERTSLEP - Hertfordshire Local Enterprise Partnership
- NALEP - New Anglia Local Enterprise Partnership
- OXLEP - Oxfordshire Local Enterprise Partnership
- SELEP - South East Local Enterprise Partnership
- SEMLEP - South East Midlands Local Enterprise Partnership
- TVBLEP - Thames Valley Berkshire Local Enterprise Partnership
- 📍 Potential staff hosts/hot desks
- Solent LEP in West of England Energy Hub
- ▨ Local Authorities in more than one LEP



Local Energy East (New Anglia LEP, Hertfordshire LEP and Cambridge & Peterborough Combined Authority)

South2East (South East LEP, Coast to Capital LEP and Enterprise M3 LEP)

Oxfordshire LEP

South East Midlands LEP

Buckinghamshire Thames Valley LEP

Thames Valley Berkshire LEP

South2East Local Energy Strategy

Vision

“To become a leader for sustainable energy production within the UK, powering innovative, decarbonised and clean economic growth”

Strategic Objectives

- ❖ Decarbonise electricity, heat & transport in line with national trajectory (80% by 2050)
- ❖ Foster clean growth – support public/private investments low carbon economy
- ❖ Innovation, demonstration & commercialisation of new technologies
- ❖ All energy produced, distributed and consumed clean and low-carbon energy

Challenges & Opportunities

CHALLENGES

- ❖ Grid constraints – generation and supply
- ❖ Utilisation of waste heat
- ❖ 20% of homes off the gas network
- ❖ Air quality & emissions
- ❖ Economic value of energy leaks out of region

OPPORTUNITIES

- ❖ Renewable Energy potential (solar, onshore & offshore wind)
- ❖ Rich in natural assets (biomass)
- ❖ Large amount of housing and commercial development
- ❖ Key sector engagement

Scale of Opportunity - 2032

- ❖ £14 billion of secured investment (commercially viable projects)
- ❖ 13.6 KT CO2E reduction in emissions (electricity, heat, transportation)
- ❖ 47 GWh transition to clean energy sources
- ❖ 75,000 jobs created or secured

Community | Business | Environment

www.southeastlep.com/energysouth2east/



Approach

FIVE PRIORITY THEMES 18 PROJECT MODELS

Low Carbon Heating	# District Heat Networks rollout # Off-gas grid homes	# Hydrogen to grid # New build Hydrogen
Energy Saving & Efficiency	# Off gas grid homes # Energy efficiency in homes	# SME support programmes
Renewable Generation	# Offshore wind # Solar and microgrid (landfill sites) # Car parks (solar potential)	# Biomass fuel supply chain # Solar – Network Rail # Biofuel evolution
Smart Energy System	# Solar and microgrid (landfill sites) # Housing and community microgrids # Support carbon capture	# Set up of ESCo/MUSCo # EV charging & hydrogen infrastructure
Transport Revolution	# EV charging & hydrogen refuelling infrastructure	# CNG fleet refuelling # Ports – energy infrastructure

Future Project Models

- ❖ New nuclear
- ❖ Airports – as consumers
- ❖ Onshore wind
- ❖ Renewable Generation in the built environment, CHP with storage
- ❖ Storage
- ❖ Pumped Hydro
- ❖ Wave & Tidal
- ❖ Circular Economy & Waste Management

Regional Governance & Delivery Mechanisms

- ❖ **Local Enterprise Partnership Strategic Boards (SELEP, EM3, C2C)**
 - ❖ Strategic direction, investment scrutiny, advocacy
- ❖ **Tri-LEP Strategic Energy Delivery Group**
 - ❖ Delivery of action plan, expertise, tactical direction & strategic fit, reporting and recommendations to LEP Boards & GSE Energy Hub, advocacy and awareness raising
- ❖ **GSE Energy Hub**
 - ❖ Development of high priority, multi-LEP and/or up-scaled project pipeline, project appraisals, financing, data analysis, communication & stakeholder engagement
 - ❖ **BEIS** - National policy, independent oversight & scrutiny
 - ❖ **Working groups** - (technical assessment, project delivery)

Funding & Finance

Project Model	Investment Envelope £m	Grant Funded	Public Funded	Private Investment Fund	Finance Institution (EIB/Pension Fund)	Government Supported scheme (CFD etc)
District Heat Network	£1,440	X	X	X	X	
H2 – gas grid	£1,253	X		X	X	
Solar & Microgrid	£1,450		X	X		X
Solar - Rail	£200		X	X	X	X
Energy Efficiency (homes)	£2,154	X	X			
EV & H2 infrastructure	£1,744		X	X	X	

Energy Hub Project Pipeline Development

Sector specialists recruited to the hubs will provide **Technical support** to energy schemes.

Support will be allocated to a limited number of schemes, those that best align with the goals of the programme.

Projects will ideally:

- Be led by a project team that has already identified a strategic objective and has senior level buy-in
- Have identified sources of funding for full business cases if initial work demonstrates an opportunity
- Are large in scale or aggregate smaller projects into larger programmes
- Have the potential to be duplicated elsewhere/ are of value to other LEP areas in the region and UK
- Deliver a public good such as carbon savings, health and wellbeing
- Rely on market or near market ready technologies, with scope to be integrated in innovative ways

Not in scope

Local Energy Hubs may come to play a networking role in disseminating information about national energy policy. Though this is a role fulfilled well by other organisations already.

The local energy hubs are not envisaged to play a significant role when it comes to:-

- ❖ Nationally significant infrastructure – e.g. transmission networks, offshore wind, nuclear, tidal schemes
- ❖ The preparation of local authority energy strategy; working with LA's on project delivery is the focus
- ❖ Climate adaptation measures; non-energy sustainability goals, environmental management
- ❖ Duplication or replacement of existing resources

Summary – Local Energy Hubs

- ❖ BEIS Local Energy Programme. Five **Local Energy Hubs** across England working in collaboration.
- ❖ Driving clean growth through energy innovation
- ❖ Meeting capacity needs of local authorities and LEPs to deliver the ambitions within the new energy strategies.
- ❖ Raising awareness of good practice, funding opportunities and green finance approaches
- ❖ Providing technical support to public bodies developing business cases and funding applications
- ❖ Promoting ‘local energy’ schemes, partnerships and collaborations.

Contacts

Maxine Narburgh

Regional Hub Manager

maxine.narburgh@energyhub.org.uk

07395 799475

General Enquiries

Erica Sutton

Hub Support Coordinator

erica.sutton@energyhub.org.uk

07542 226976

www.energyhub.org.uk

www.southeastlep.com/energysouth2east/

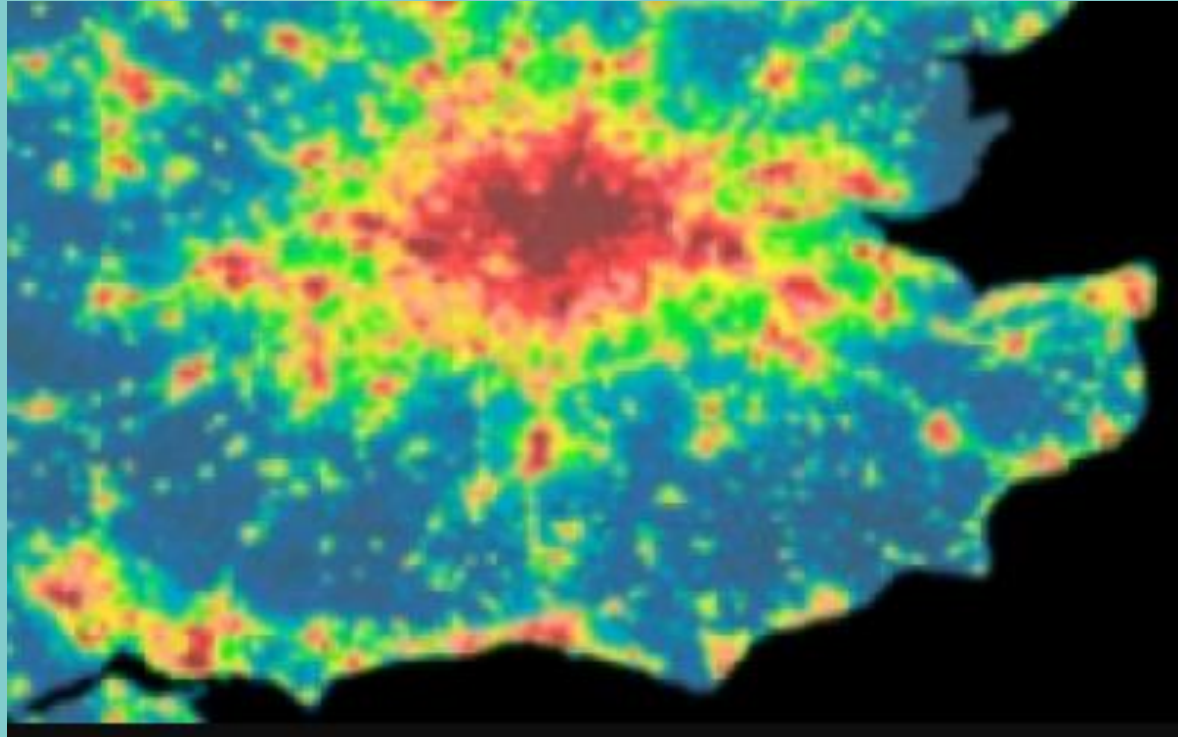
ICE South: **Infrastructure required to enable energy projects**

2nd May 2019

becg

built
environment
communications
group

The energy landscape



becg

Generation



Generation...is changing



becg

And demand is also changing



becg

We need a fully integrated infrastructure and energy solution



An example - ports



So what can we do?



So what can we do?



becg

Design stuff that will happen



Name: Tom Ware

Age: 32

Comments:

- *“Windfarms are fantastic pieces of engineering and modern technology which produce renewable energy.”*
- *“Although it may cause disruption to infrastructure when they’re being built, I think it’s still worth the hassle.”*
- *“I’ve seen some in Essex and they look like a modern marvel. They don’t blight the landscape at all.”*

Name: Mr. Sheppard

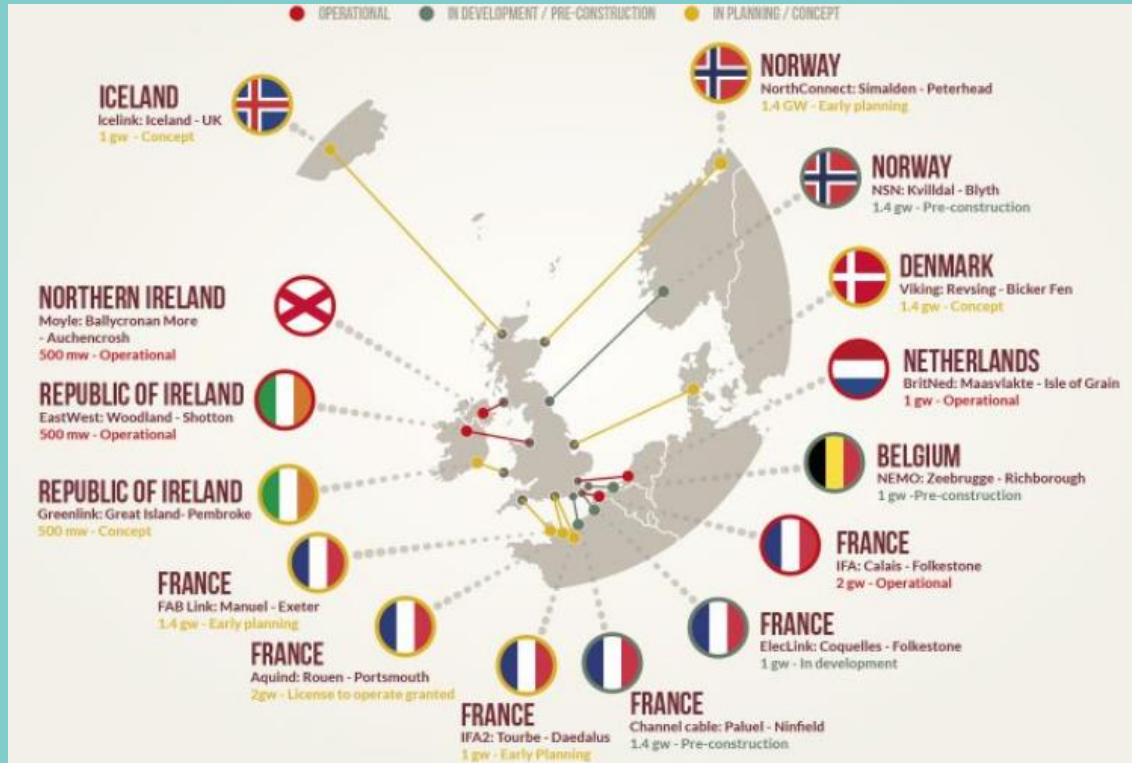
Age: Retiree

Comments:

- *“If I lived nearby I’d be kicking off about it.”*
- *“They do look ugly, but I suppose they look better on water than they do on land.”*
- *“There must be a better alternative.”*
- *“There’s already too many in place like Skegness.”*



Interconnectors



Support innovative re-engineering solutions



becg

Support innovative re-engineering solutions



becg

Community Energy South – a little about us

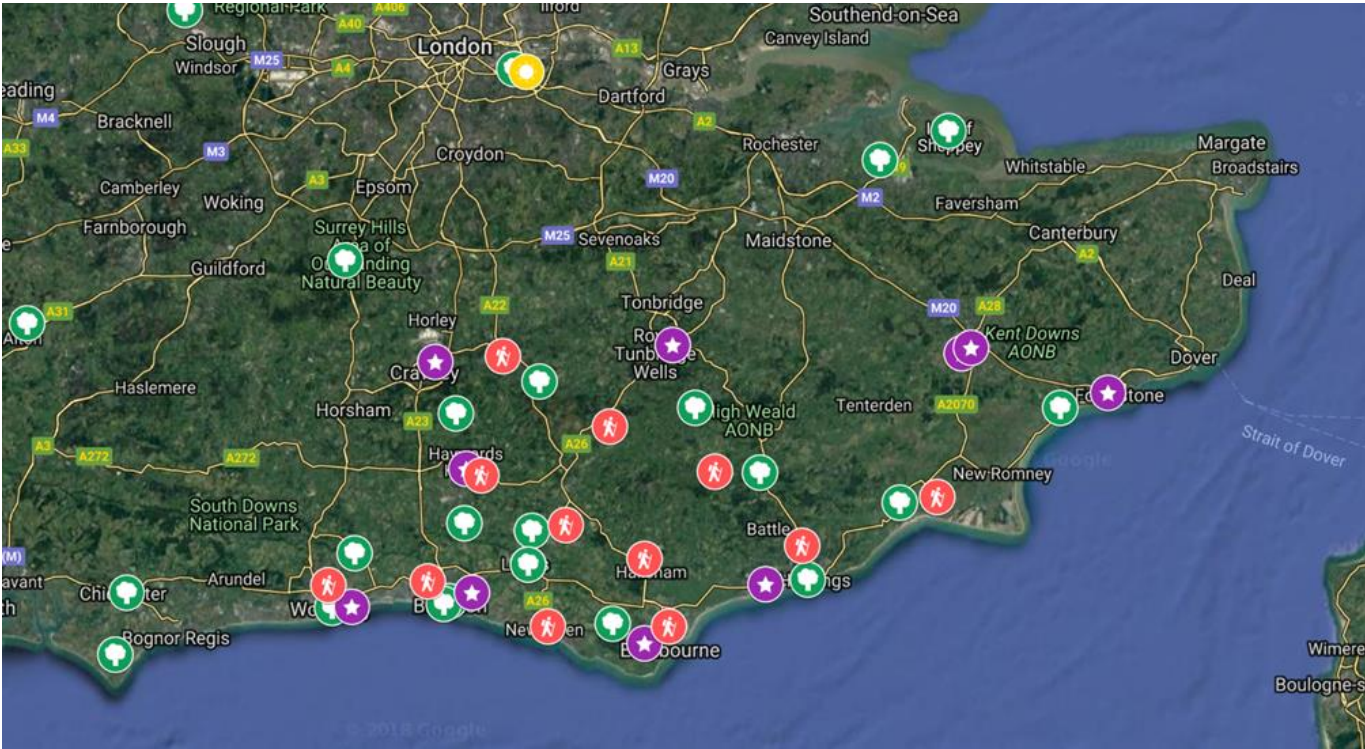
Community Energy South was set up in 2013 to support the network of community energy groups in the South East of England. To help establish the network support funding was awarded by Department of Energy and Climate Change (DECC) and the Cabinet Office, East & West Sussex County Council. Community Energy South is recognised by Community Energy England as the representative body for Community (Local) Energy in the South East.

2016-18 Partners include UK Power Networks, University of Brighton, South East Enterprise Partnership and their Low Carbon Across the South East (LoCASE), Department of Business, Energy and Industrial Strategy, National Energy Action, Big Energy Saving Network, NatureSave, Community Energy England, 1010 Climate Change Group, Our Power



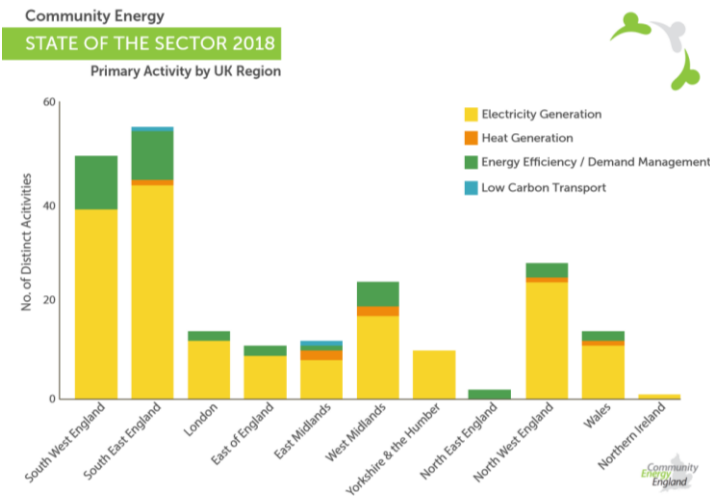
Our Mission is to encourage the growth of community owned renewable energy in the South East, increase energy efficiency and to help educate the communities to use less oil, coal and gas.

We also work together with our member groups to reduce fuel poverty and make energy affordable for vulnerable people.



Map Showing Community Energy South Outreach in 2018/19

- Green = Energy Groups
- Red = Energy Champion doing fuel poverty work
- Purple = Faith & Power Groups



STATE OF THE SECTOR – for Community Energy in England and Wales 2018

Pipeline of Projects
– Riding Sunbeams (CES)
estimated 120MW



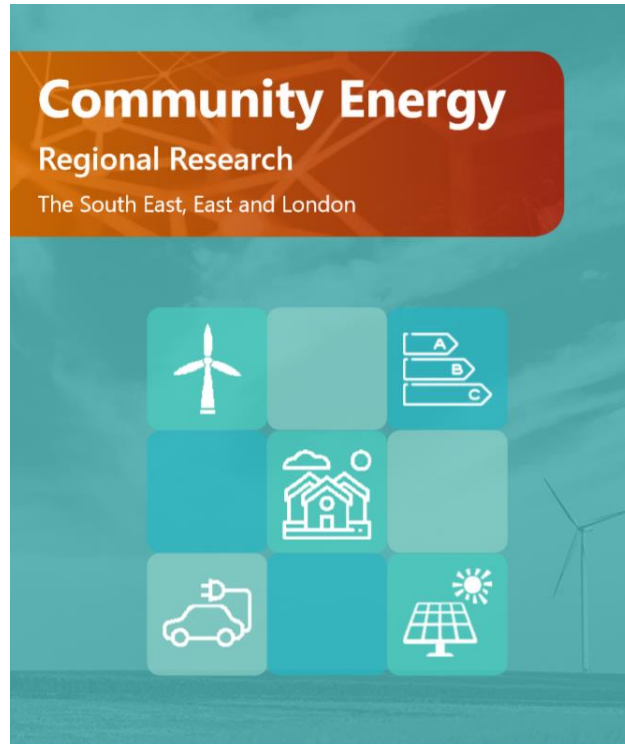
South East Groups

Across **31** community energy organisations there are...



Motivations for Community Energy:

- “Carbon reduction”
- “Community involvement”
- “Awareness raising”
- “Improving local biodiversity”
- “Tackling fuel poverty”
- “Financially supporting schools”



Smart Communities



Stakeholders



People



Communities

COMMUNITIES BRING VALUE:

Energy awareness projects

Innovation – DSO

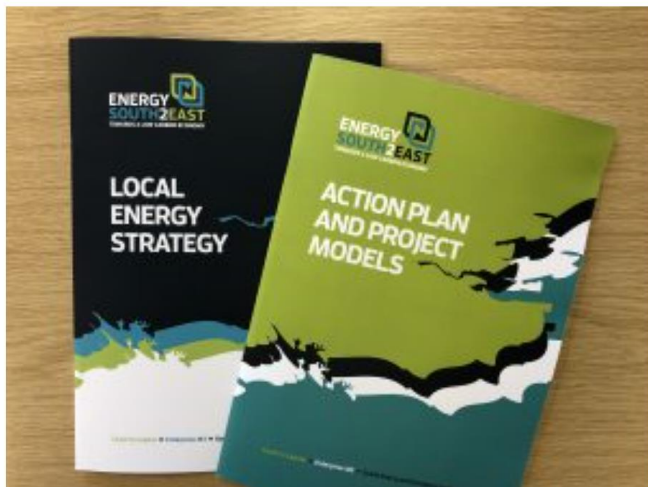
Education - apprenticeships

Energy Strategy for the South East.

The Community Energy South team attended the launch of the Energy South2East Energy strategy, led by the three Local Enterprise Partnerships - South East LEP (SELEP), Coast to Capital and Enterprise M3. The strategy outlines potential investment of £14,755 billion, reduction of 13,615Kt CO2e, and transition of 47,455GWH of energy to clean energy sources.

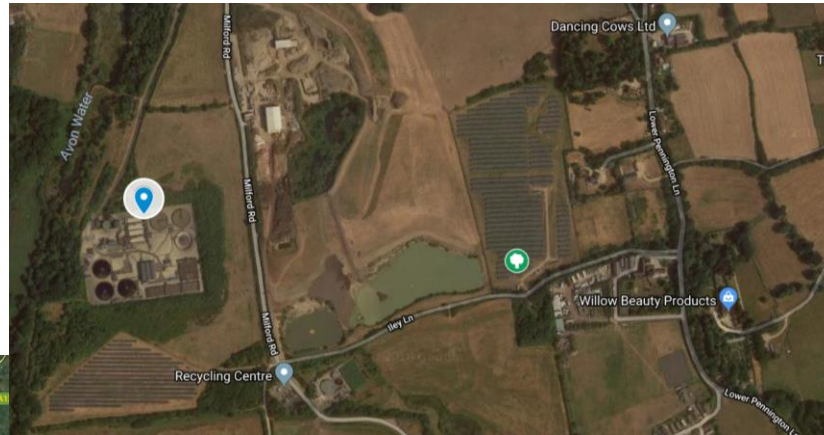
Community Energy Groups across the region input to the strategy.

You can read the Local Energy strategy [HERE](#)
and the Action plan and project models [HERE](#)



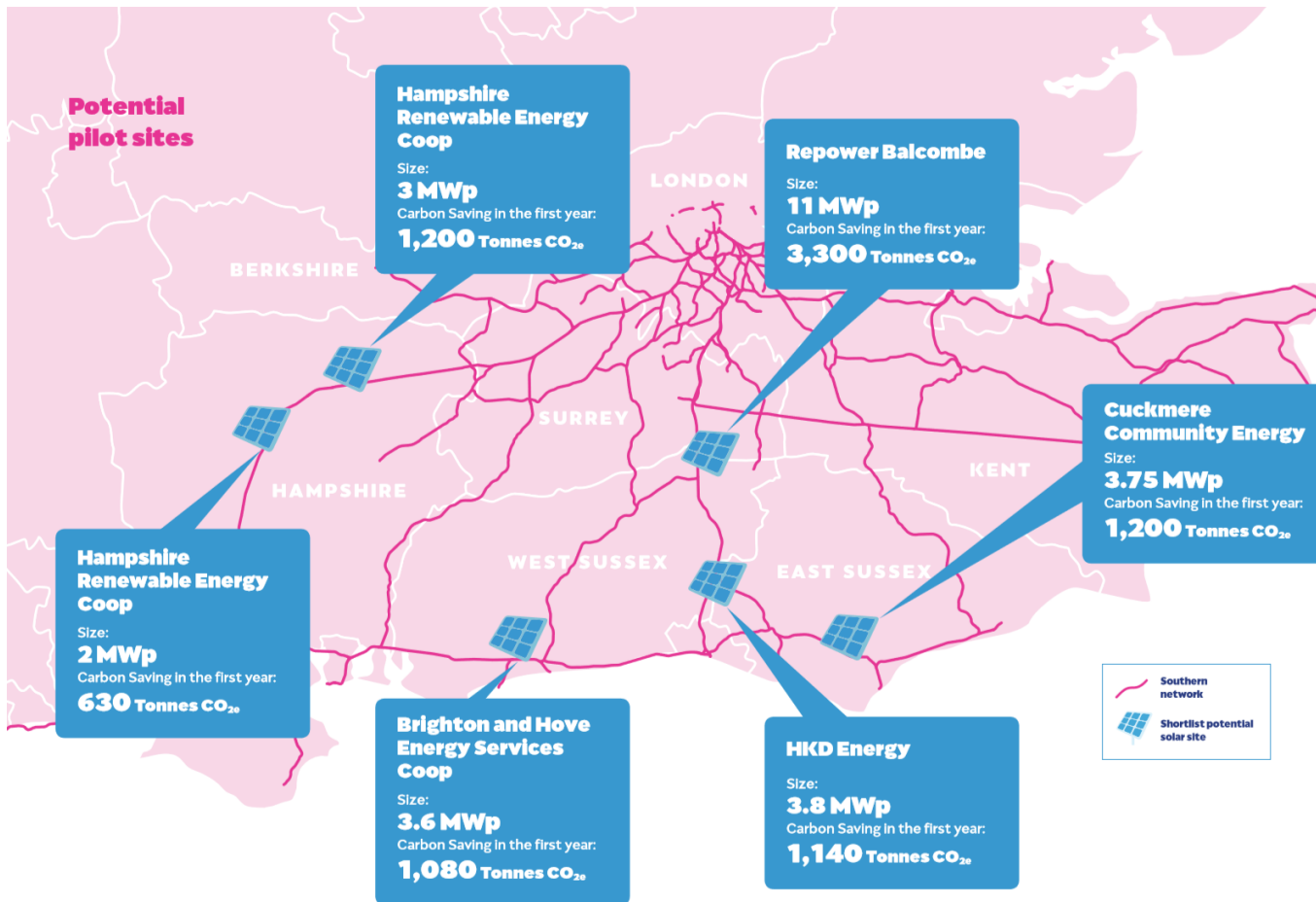
“We intend that this call for action will facilitate a clear, collective effort across our region from multiple stakeholders, the potential for inspiring and meaningful change being self-evident.”

Map showing Community Energy groups and Southern Water Sites



Example of a good neighbour at Milford Road WWT adjacent to a community solar farm near Lymington. The WWT uses estimated 378kW







Partnerships

Benefits for our country, our future, the environment and our communities

-  Cheaper power
-  Low carbon renewable energy
-  Social impact
-  Opportunity to invest
-  Play a big part in the 'Social Contract'
-  Supporting a local community to invest
-  Long term partnership
 - with a neighbour who cares about their community
 - that offers good news stories
 - Community benefits
 - Local jobs