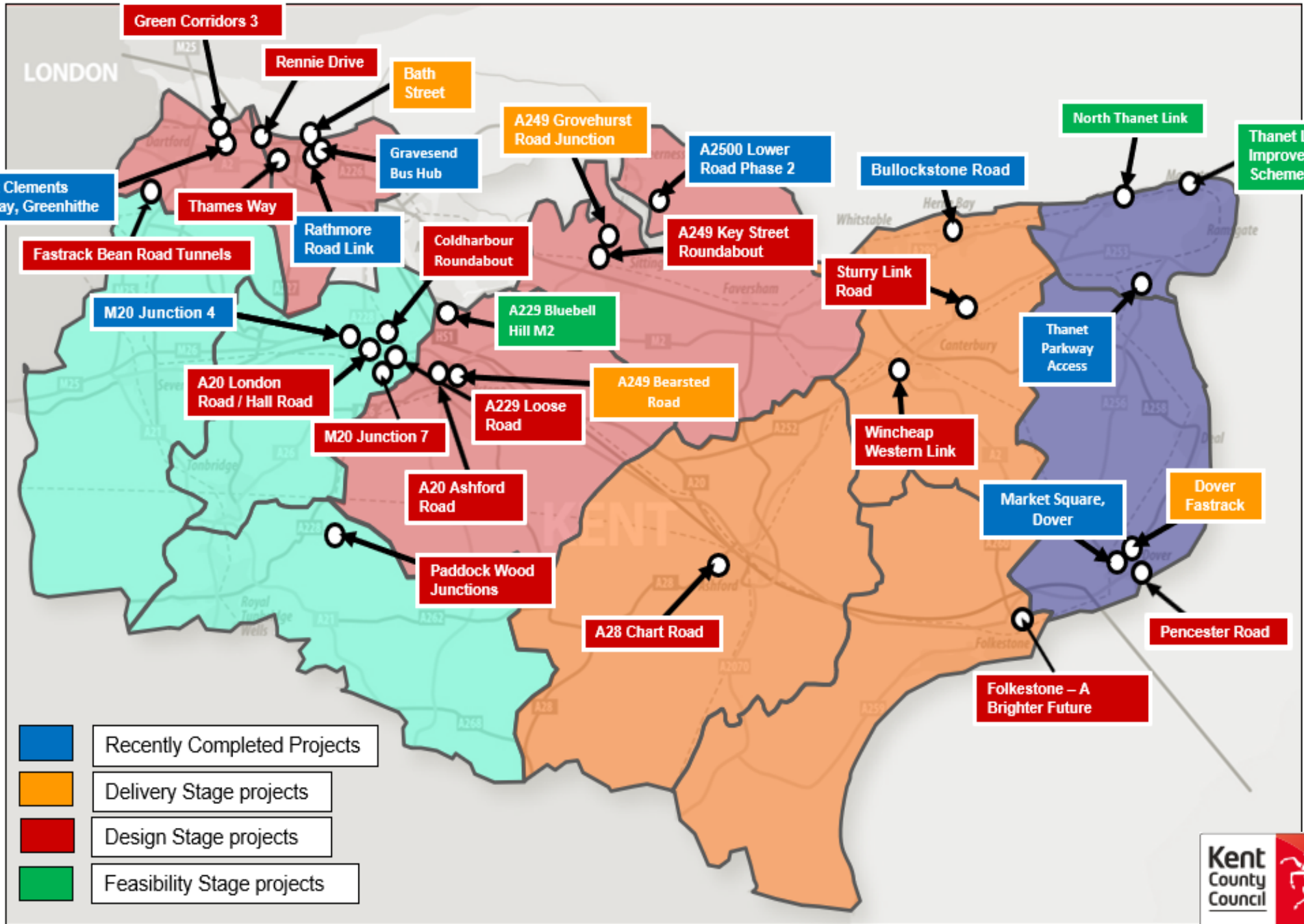




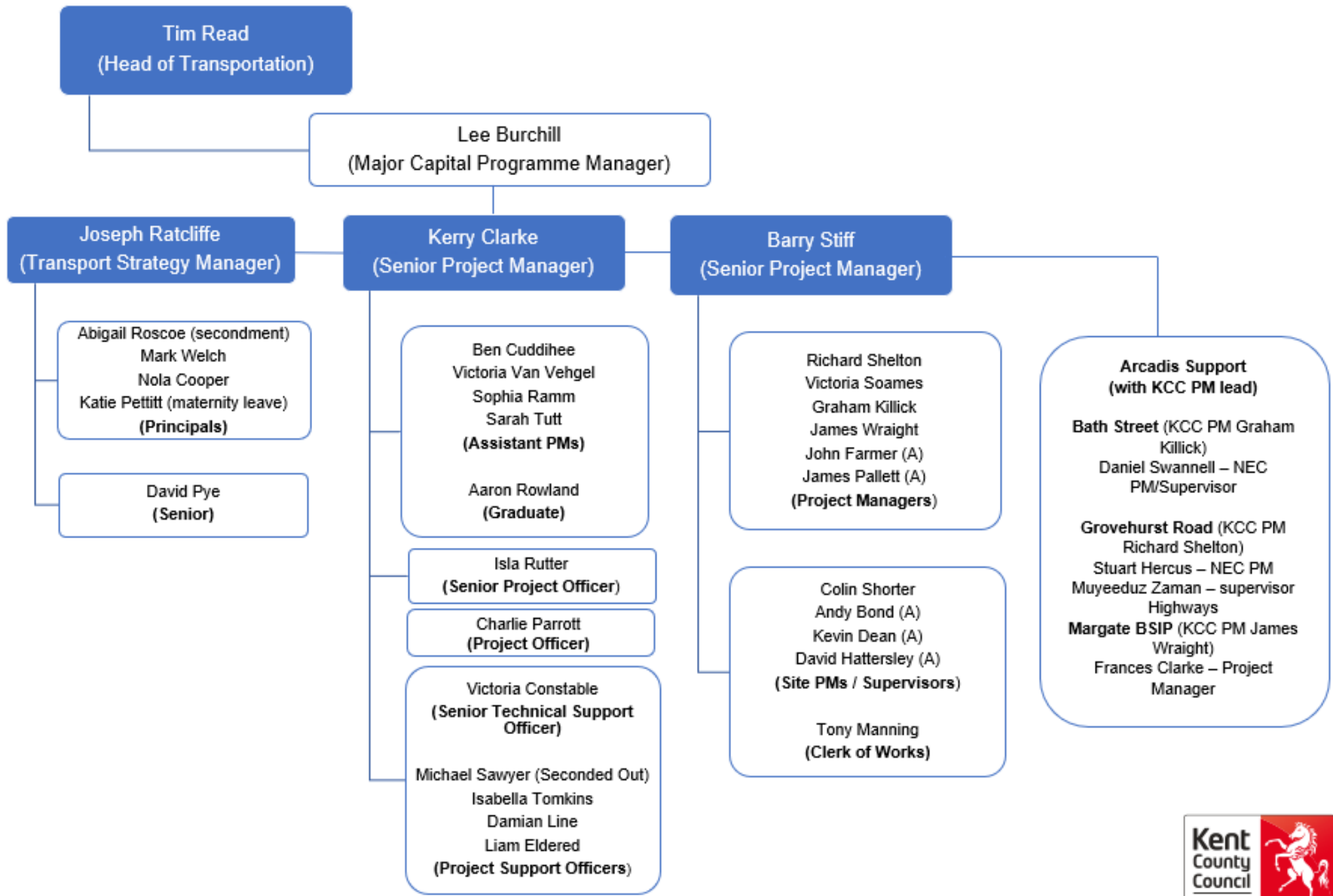
# ***Major Capital Programme Team*** ***Scheme Point of Contact Document***

***Contacts as of December 2023***

***Schemes as presented at the CECA Southern Client Liaison Meeting on  
Wednesday 8th November 2023***



- Recently Completed Projects
- Delivery Stage projects
- Design Stage projects
- Feasibility Stage projects



# ***Pipeline Scheme Point of Contact List***

## ***Major Capital Programme Team Senior Management***

- *Lee Burchill, Major Capital Programme Manager - Lee.Burchill@kent.gov.uk*
- *Kerry Clarke, Senior Programme Manager - Kerry.Clarke@kent.gov.uk*
- *Barry Stiff, Senior Project Manager - Barry.Stiff@kent.gov.uk*
- *Joseph Ratcliffe, Transport Strategy Manager - Joseph.Ratcliffe@kent.gov.uk*

## ***Green Corridors 3 - Rolling Programme***

- *James Pallett, Project Manager - James.Pallett@kent.gov.uk*
- *Aaron Rowland, Graduate Programme Support Officer - Aaron.Rowland@kent.gov.uk*

## ***Rennie Drive Junction Improvements***

- *Graham Killick, Project Manager - Graham.Killick@kent.gov.uk*

## ***Thames Way***

- *Sarah Tutt, Assistant Project Manager - Sarah.Tutt@kent.gov.uk*

## ***A229 Blue Bell Hill and M20 Junction Interchanges***

- *Victoria Soames, Project Manager - Victoria.Soames@kent.gov.uk*

### **A229 Loose Road Corridor - Wheatsheaf Junction**

- *Barry Stiff, Senior Project Manager - [Barry.Stiff@kent.gov.uk](mailto:Barry.Stiff@kent.gov.uk)*
- *Colin Shorter, Project Manager - [Colin.Shorter@kent.gov.uk](mailto:Colin.Shorter@kent.gov.uk)*

### **A20 Ashford Road j/w Willington Street, Maidstone**

- *Barry Stiff, Senior Project Manager - [Barry.Stiff@kent.gov.uk](mailto:Barry.Stiff@kent.gov.uk)*
- *Sarah Tutt, Assistant Project Manager - [Sarah.Tutt@kent.gov.uk](mailto:Sarah.Tutt@kent.gov.uk)*

### **Paddock Wood Junction Improvements**

- *Victoria Van Veghel, Assistant Project Manager - [Victoria.VanVeghel@kent.gov.uk](mailto:Victoria.VanVeghel@kent.gov.uk)*
- *Barry Stiff, Senior Project Manager - [Barry.Stiff@kent.gov.uk](mailto:Barry.Stiff@kent.gov.uk)*

### **A249 Key Street Junction Improvements**

- *Richard Shelton, Project Manager - [Richard.Shelton@kent.gov.uk](mailto:Richard.Shelton@kent.gov.uk)*
- *Sophia Ramm, Assistant Project Manager - [Sophia.Ramm@kent.gov.uk](mailto:Sophia.Ramm@kent.gov.uk)*

### **Sturry Link Road**

- *Richard Shelton, Project Manager - [Richard.Shelton@kent.gov.uk](mailto:Richard.Shelton@kent.gov.uk)*
- *Sophia Ramm, Assistant Project Manager - [Sophia.Ramm@kent.gov.uk](mailto:Sophia.Ramm@kent.gov.uk)*

### **Wincheap Western Link**

- *Ben Cuddihee, Assistant Project Manager - [Benjamin.Cuddihee@kent.gov.uk](mailto:Benjamin.Cuddihee@kent.gov.uk)*

### **Folkestone - A Brighter Future**

- *Ben Cuddihee, Assistant Project Manager - Benjamin.Cuddihee@kent.gov.uk*
- *Kerry Clarke, Senior Programme Manager - Kerry.Clarke@kent.gov.uk*

### **North Thanet Link**

- *James Wraight, Project Manager - James.Wraight@kent.gov.uk*
- *Barry Stiff, Senior Project Manager - Barry.Stiff@kent.gov.uk*

### **A20 London Road / Hall Road Junction**

- *James Pallett, Project Manager - James.Pallett@kent.gov.uk*
- *Barry Stiff, Senior Project Manager - Barry.Stiff@kent.gov.uk*

### **M20 Junction 7**

- *Victoria Soames, Project Manager - Victoria.Soames@kent.gov.uk*
- *Barry Stiff, Senior Project Manager - Barry.Stiff@kent.gov.uk*

### **Fastrack B225 Bean Tunnels**

- *Graham Killick, Project Manager - Graham.Killick@kent.gov.uk*

### **Pencester Road**

- *Victoria Van Veghel, Assistant Project Manager - Victoria.VanVeghel@kent.gov.uk*
- *Barry Stiff, Senior Project Manager - Barry.Stiff@kent.gov.uk*