

CECA SW MEMBERS MEETING

Nigel Riglar

Executive Director: Place

Today

- Introduction to South Gloucestershire
- Economic growth opportunities and challenges
- Infrastructure programme
- Streetcare
- Reflections

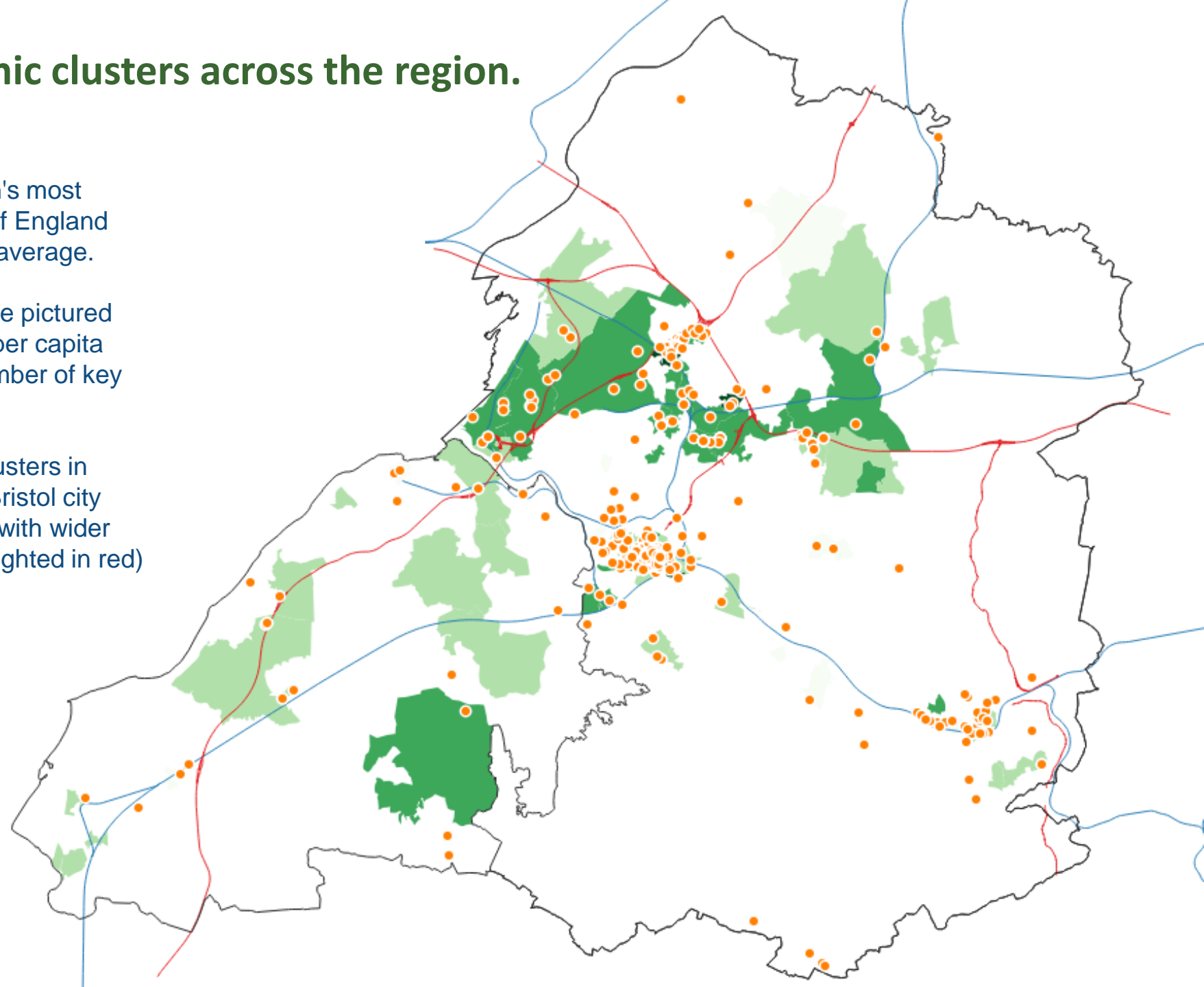


We can identify clear economic clusters across the region.

1. South Gloucestershire is the region's most productive UA. It is the only West of England UA with productivity above the UK average.
2. We can see this in more detail in the pictured map. This shows the highest GVA per capita LSOAs, alongside setting out a number of key employment sites in the region.
3. We can observe clear economic clusters in each of the four UAs, including in Bristol city centre, north Fringe and into Bath, with wider sites often linked to the SRN (highlighted in red)

Key

- Darker green areas have the highest GVA per capita
- Orange dots set out key employment sites



Challenges and opportunities

Strategic approach to shaping the future of the district

Improved community involvement in designing the future

Tackling the emissions gap & nature decline

Clear ask of regional and central government

Delivery of area master plan priorities

Deliver new local plan

Accessing private & public finance For climate & place shaping

Positive partnership with WECA & Western Gateway

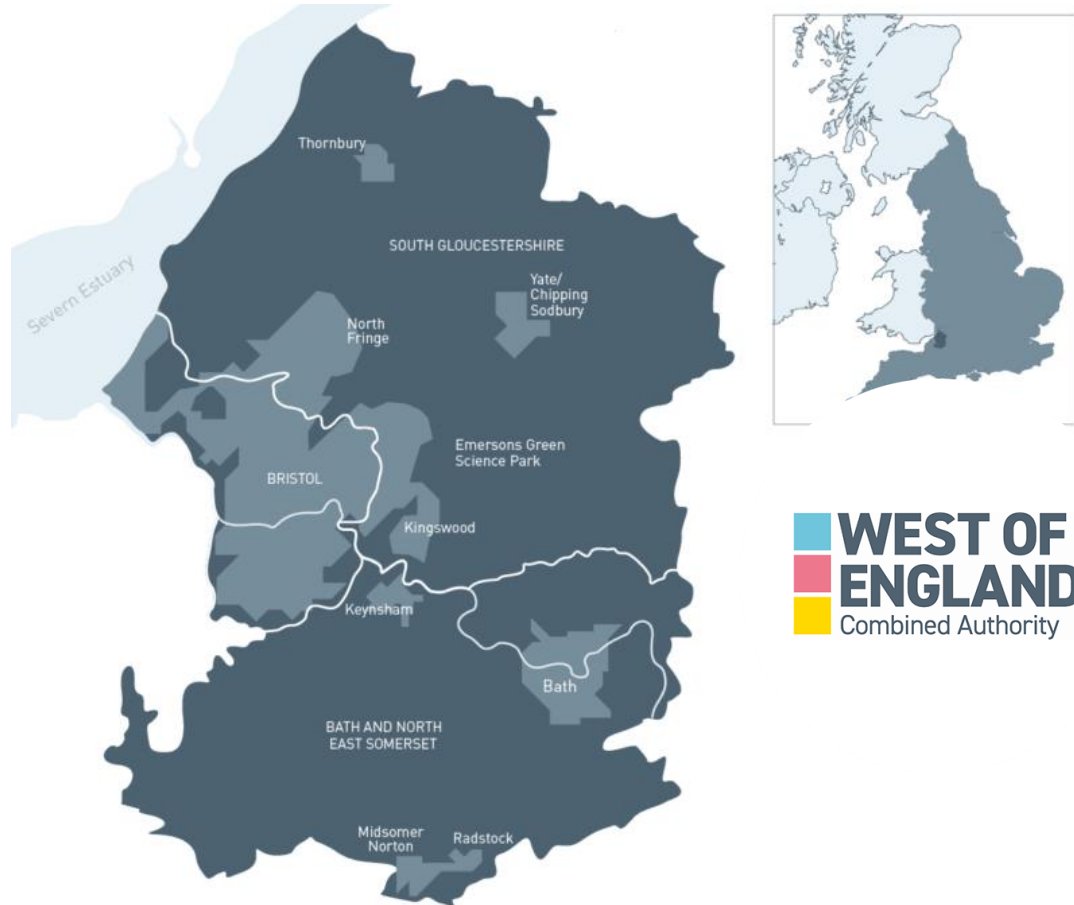
Building the South Gloucestershire approach to regeneration

Maintaining planning application performance

Deliver Climate and Nature Emergency Plan (Yr4)

Regional priorities & project pipelines

West of England Combined Authority (WECA)



- The West of England Combined Authority (WECA) was established in 2017 following agreement of devolution deal with Government (10 CAs in England).
- WECA covers three Unitary Authority areas:
 - Bath and Northeast Somerset (BaNES)
 - Bristol City Council (BCC)
 - South Gloucestershire Council
- WECA has regional responsibilities around transport, infrastructure, and adult education.
- A positive relationship between stakeholders will unlock significant funding opportunities and enable collective and joined up strategic planning of the region
- North Somerset Council (NSC) is not part of WECA. It is however part of the Local Enterprise Partnership (LEP) and a member of the Joint West of England Committee.

Place shaping strategy

3 strands:

- Better Council developments (regeneration led),
- Building strong working relationships with legacy landowners (e.g., YTL who are developing Brabazon at Filton Airfield); and,
- Nudging the mainstream development market by being clearer about what outcomes we want and backing that up with clear policy and strong negotiation.



University of the
West of England



Major Transport Projects, Housing Growth Sites and Climate and Nature Emergency Projects



Housing Growth Sites

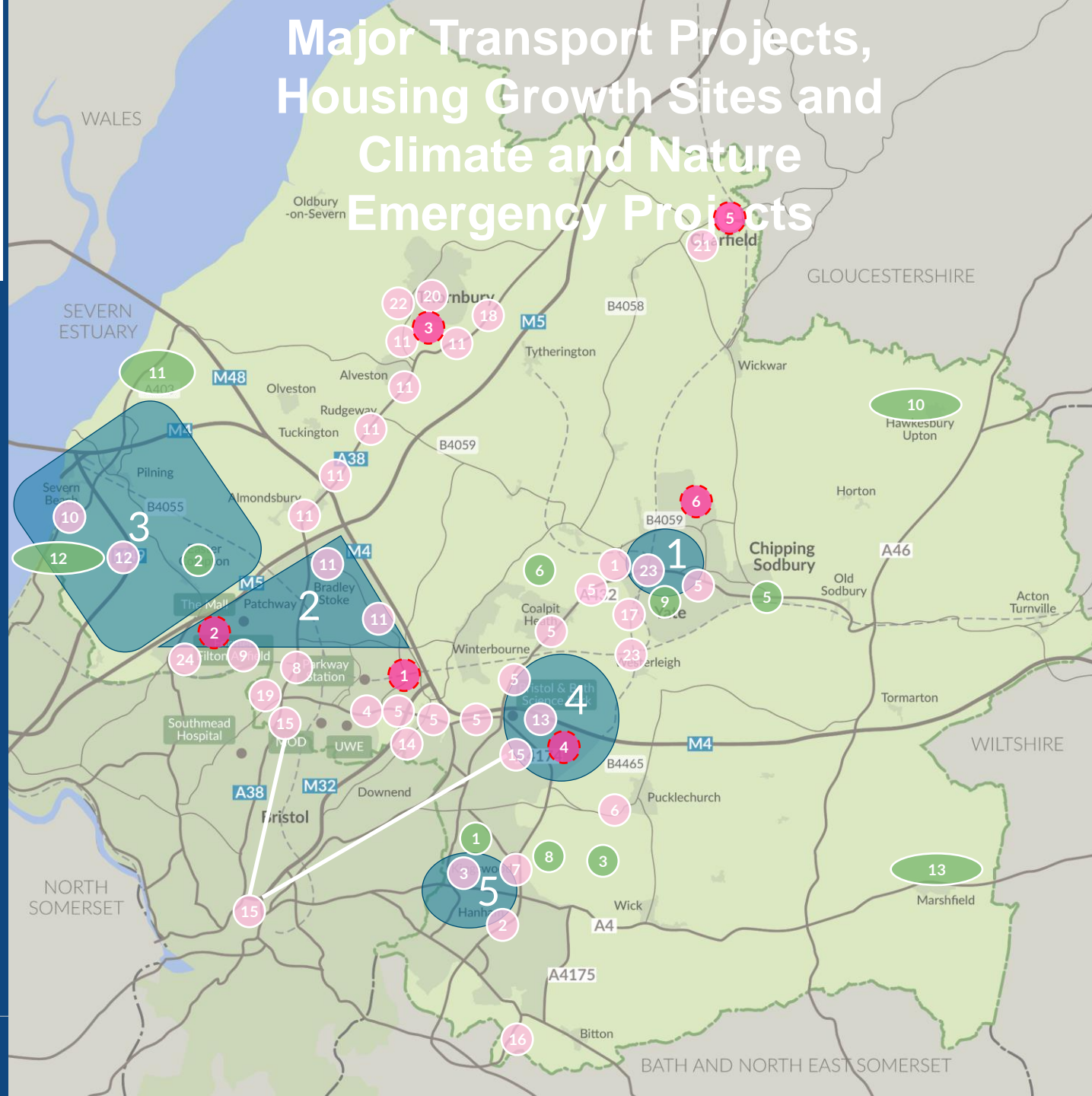
- 1 East of Harry Stoke New Neighbourhood
- 2 Cribbs/Patchway New Neighbourhood
- 3 Thornbury
- 4 Emerson Green
- 5 Charfield
- 6 New Neighbourhood at Yate

Masterplan Areas

- 1 Yate
- 2 North Fringe
- 3 Severnside
- 4 East Fringe
- 5 Kingswood

Climate and nature Emergency Major Projects

- 1 Mine water Heating Investigations
- 2 The WAVE Solar, Battery, EV charge point Support
- 3 Commons connected Siston Common
- 4 Woodwell Meadows
- 5 Frome Reconnected
- 6 Frampton River Reserve (Frampton Cotterell)
- 7 Jubilee Park (Oldland Parish)
- 8 Wild Belt (Warmley)
- 9 Westerleigh Common (Improvement Plan)
- 10 Inglestone and Hawksbury Common (Higher Level Stewardship)
- 11 ASEA Ecological Mitigation Site
- 12 Strategic Heat Network (Severnside to A38)
- 13 Marshfield Community Energy



Major Transport Projects

- 1 Yate Park & Ride
- 2 Wraxall Road
- 3 Kingswood High Street
- 4 MetroBUS Consolidation
- 5 CRSTS A432 Multi Modal Corridor Improvements
- 6 Emersons Green Greenways
- 7 CRSTS Bristol Bath Railway Path Improvements
- 8 Cribbs Patchway MetroBUS Extension
- 9 Cribbs Patchway New Neighbourhood Cycling Links
- 10 Severnside Flood Defence Works
- 11 CRSTS A38 Multi Modal Corridor Improvements
- 12 M49 New Junction
- 13 M4 J18A
- 14 M32 Park and Ride
- 15 Mass Transit
- 16 Willsbridge to Keynsham Cycle Improvements
- 17 Yate Spur
- 18 Gillingstool Grovesend Road Cycling Improvements
- 19 Filton Station MetroWEST
- 20 Thornbury Hospital
- 21 Charfield Station
- 22 Thornbury High Street
- 23 Yate Station
- 24 Henbury Station MetroWEST

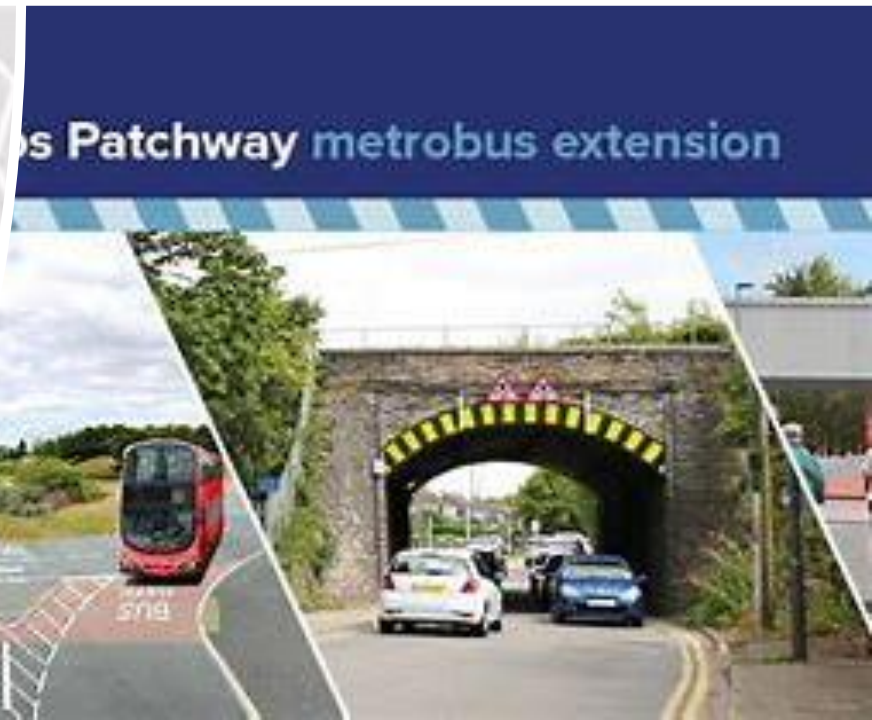
Net Zero - CRSTS – sustainable travel

- Working in partnership with the West of England MCA
- Sustainable travel corridors – A38, A432
- New station - Charfield
- M32 Park & Ride
- Liveable Neighbourhoods
- Improvements to the Bath – Bristol Cycle Path



Net Zero - Cribbs Patchway Metrobus Extension (CPME)

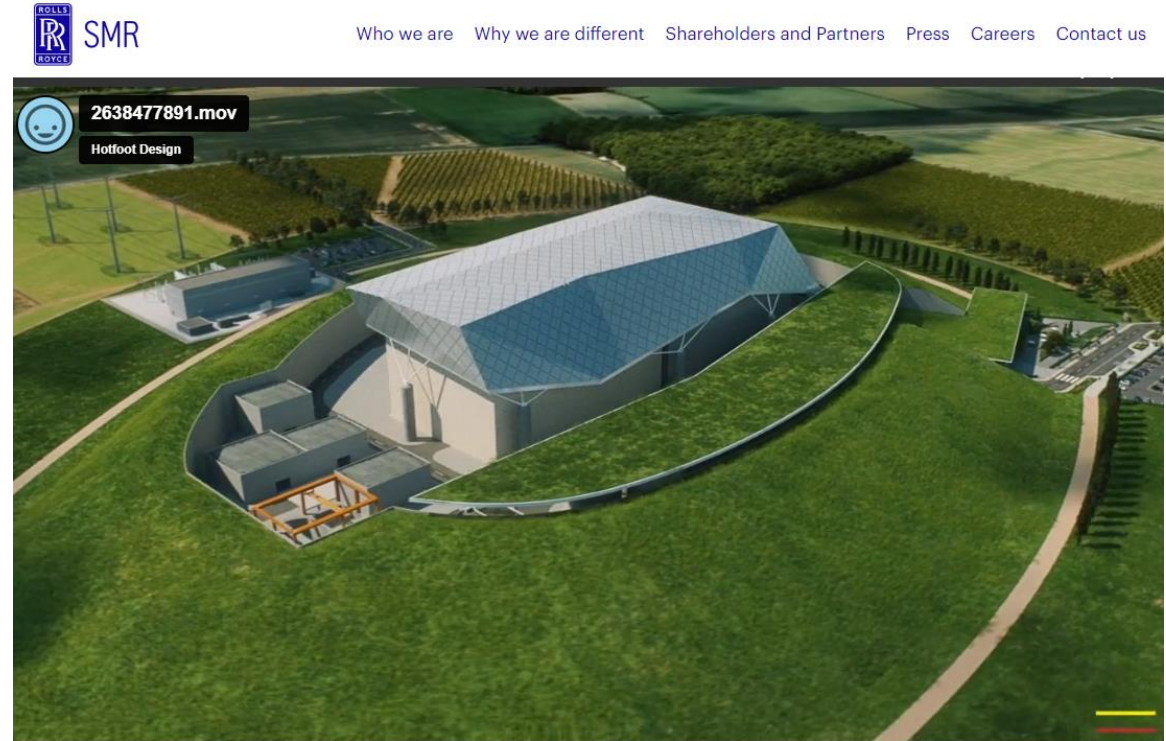
- C. £60m project
- Linking Parkway Station through to the new 6000+ home Brabazon development
- Centre piece was the removal of the old brick arch 'bottleneck' bridge and its replacement by wheeling a 5000te pre-cast bridge into place. Involved taking possession of the railway main line. All done during lockdown.
- Delivers a sustainable travel corridor including new walking, cycling and public transport facilities.



Net Zero – New Nuclear

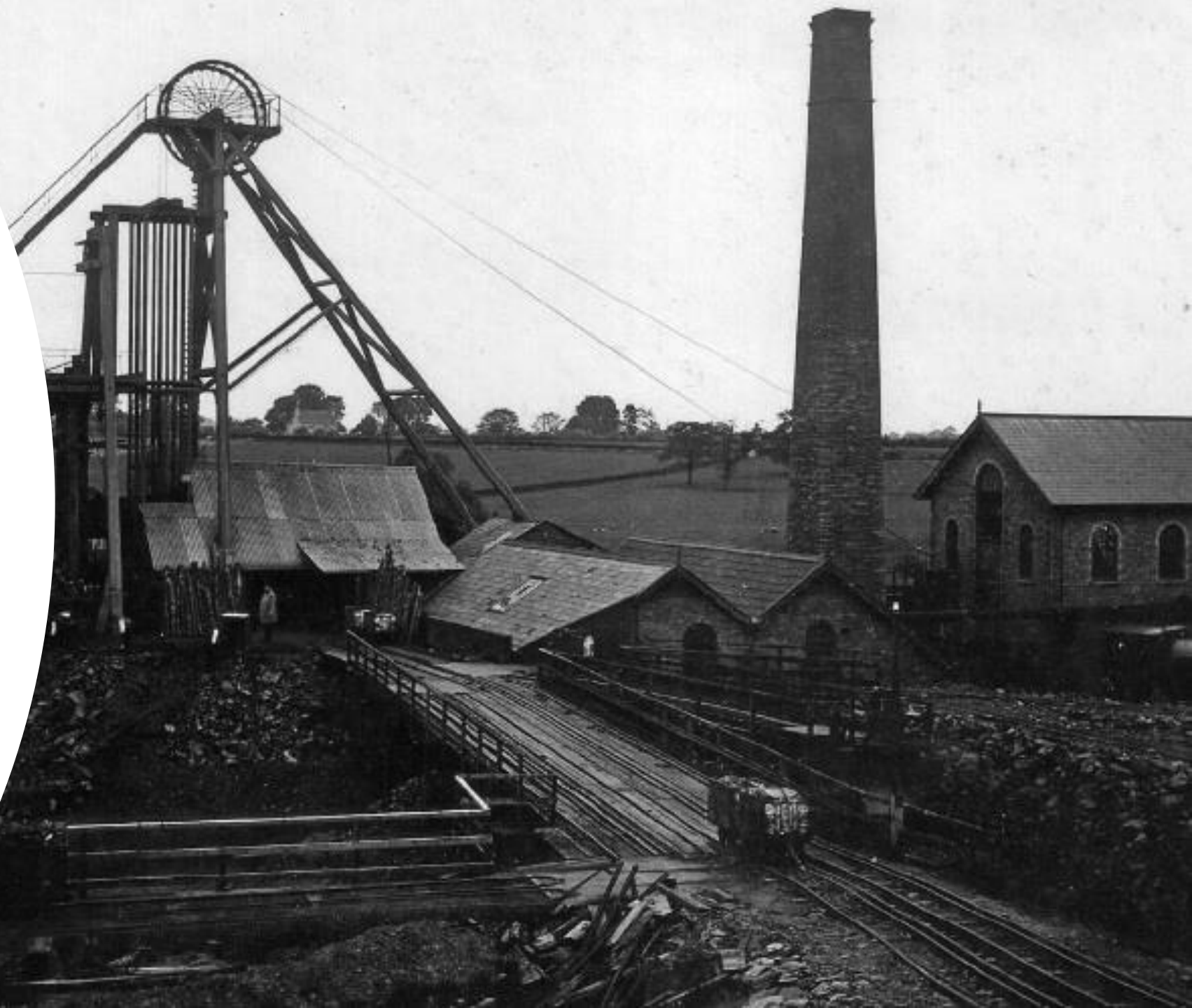
Severn Edge (Oldbury and Berkeley)

- The Western Gateway Partnership led bid to bring the first STEP fusion prototype plant to the region was unsuccessful. But there is ongoing and active interest in the Oldbury & Berkeley sites for small nuclear technologies and related green energy technologies.
- Rolls Royce has shortlisted Oldbury as a potential location for Small Modular Reactor (SMR) Deployment. There is other interest in the site.
- The Western Gateway STEP partners are currently working on a Vision setting out our ambition and requirements from development at Severn Edge.



Net Zero -Energy Infrastructure

- South Gloucestershire Council is investigating the potential use of former mine workings in the district as a source of renewable heating and cooling for new and existing buildings.
- Retrofitting 25000 homes and business on the outskirts of Bristol where financing structures don't seem to exist to deal with this level of risk over such a scale of project and methods to retail heat (and cooling) are evolving, especially in retrofit.
- Benefiting from Bristol's City Leap



Overview of our Highway Asset

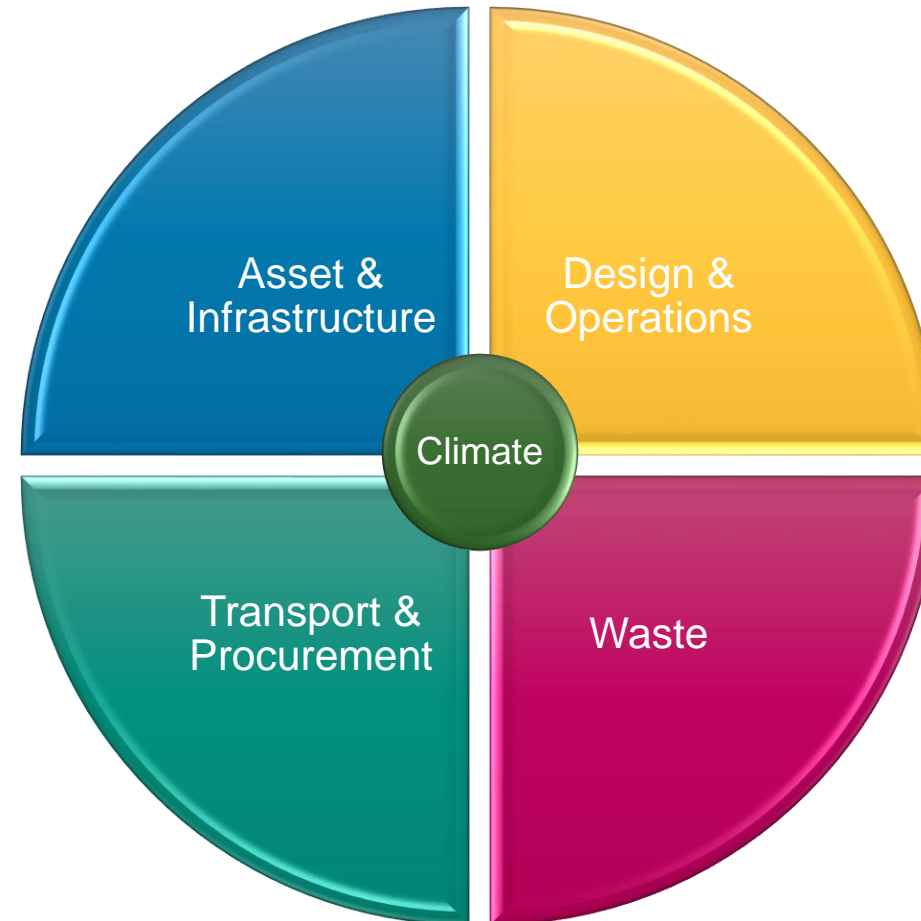
- 1481km carriageway
- 1395km footway
- 121km cycleway
- 45,000 gullies
- 788 bridges
- 391 retaining walls
- 31,700 streetlights
- 201 traffic signal sites
- £14.981m pa revenue maintenance
- £17.505m pa capital maintenance



Overview of StreetCare

- Data Collection
- Asset Management
- Network Management
- Place Management
- Public Rights of Way

- Public Transport
- Fleet Operations
- Supply Chain Management

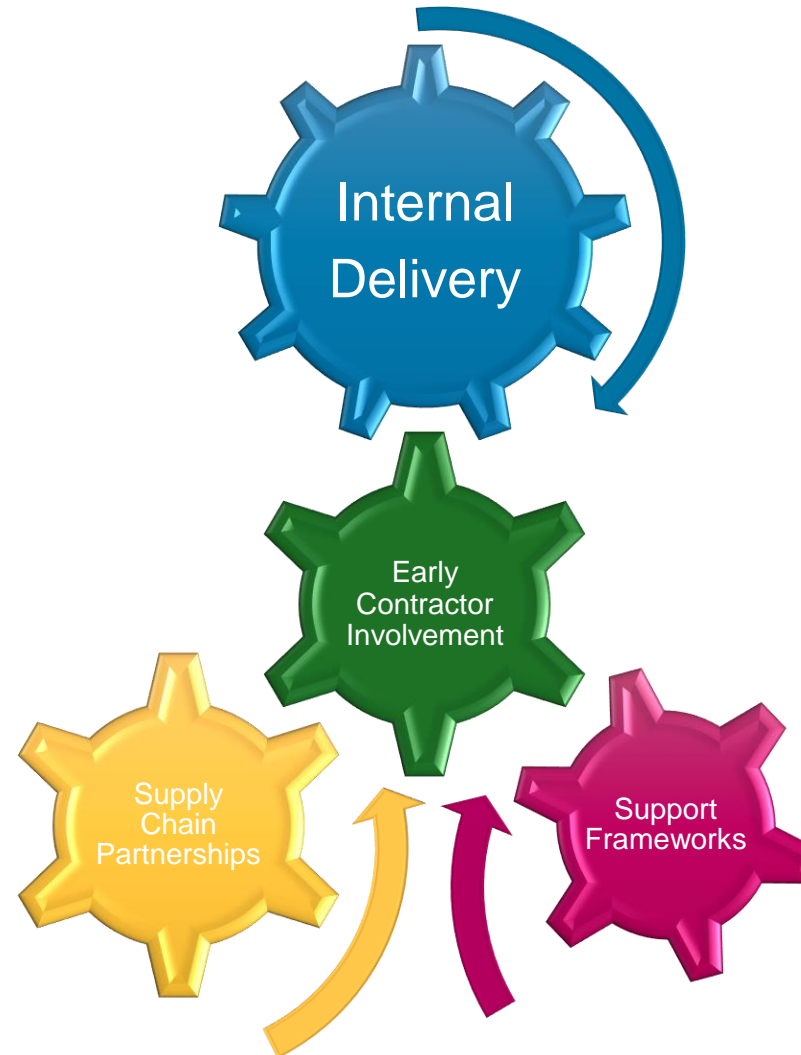


- Design
- Operations Delivery
- Highway Maintenance
- Grounds
- Structures
- Street Lighting

- Street Cleansing
- Waste Operations
- Waste Strategy
- Enforcement
- Landfill Management

Delivery Model

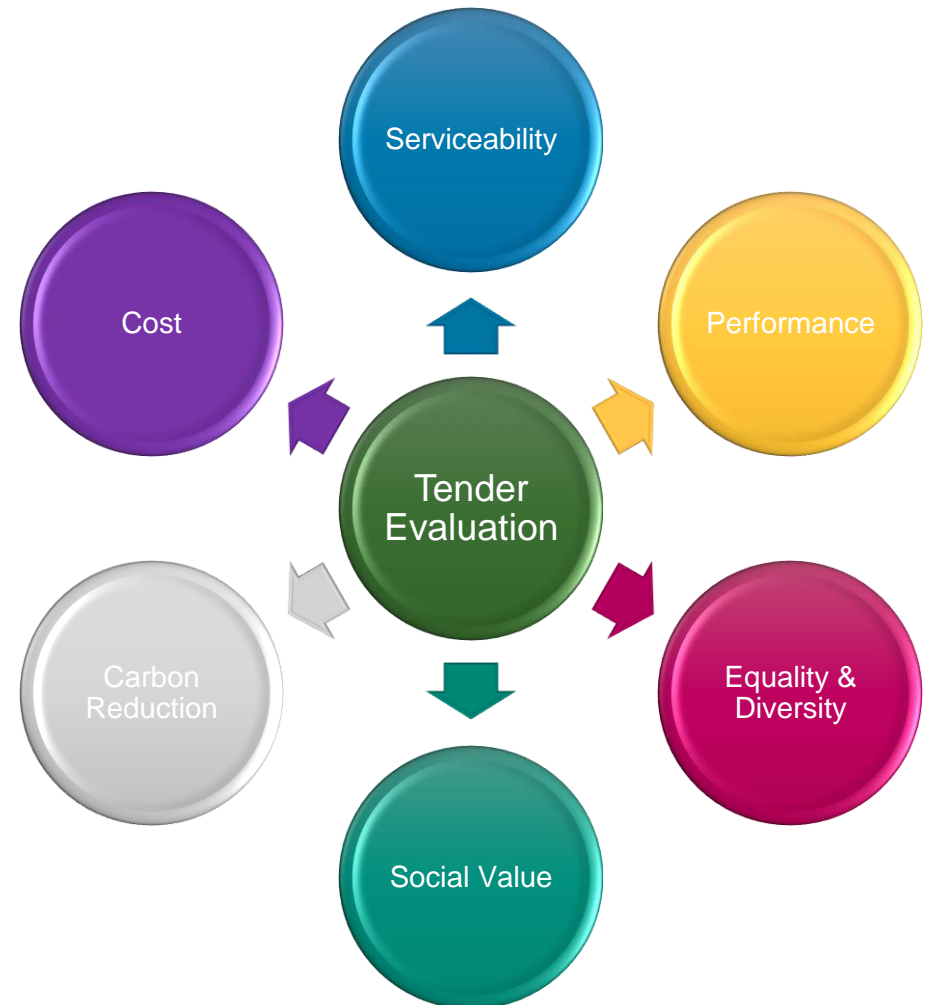
| Internal Delivery |
|---|
| <ul style="list-style-type: none"> • Civil Engineering • Structural Engineering • Highway Maintenance • Street Lighting • Traffic Signals • Winter Maintenance • Fleet Maintenance |



| Established Supply Chain Partnerships |
|---|
| <ul style="list-style-type: none"> • Surfacing & Quarried Materials • Temporary Traffic Management • Specialist Surface Treatments • Weather Forecasting • Weather Stations • Waste |

| Established Support Frameworks |
|--|
| <ul style="list-style-type: none"> • Top-up Labour • Construction Plant • Work Equipment • Merchant Materials • Construction Plant • Fleet Parts |

Working for StreetCare



Forthcoming Procurement

- Future procurement activity to support delivery of City Region Sustainable Transport Settlement (CRSTS)
 - Civil engineering labour top-up
 - Earthworks disposal and haulage
 - Supply only of precast concrete products
 - Supply and install specialist retaining walls
 - Scientific laboratory materials sampling and testing
- Informal discussion shaun.wilson@southglos.gov.uk
- Tender enquires to ProcurementHubECS@southglos.gov.uk
- Formal procurement activity hosted through www.supplyingthesouthwest.org.uk



Reflections

- South Gloucestershire is an economic powerhouse
- Significant growth pressure – housing, economy – all within environmental limits
- Functional economic area operates across several geographies
- Multiple partnerships amplifying local leadership of place
- Clear asks and working of the partnerships
- Massive investment programme supporting economic and housing growth as well as tackling the nature and climate emergency.
- Cast of thousands!
- Making places within South Gloucestershire better.
- Thank you

Thank You

Nigel Riglar, Executive Director
nigel.riglar@southglos.gov.uk