

CECA: South West

26th March 2025

The Wiltshire Perspective

Samantha Howell – Director, Highways and Transport

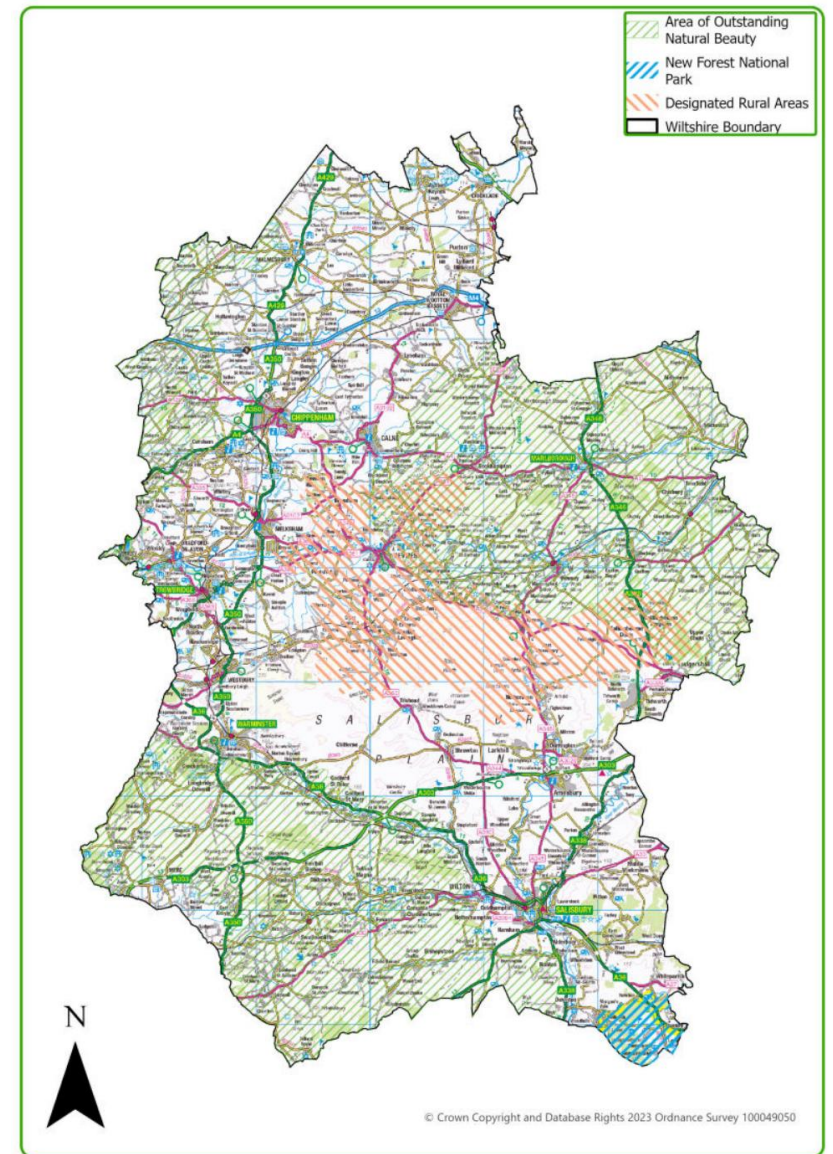
David Bullock – Head of Major Highway Projects



Wiltshire Council

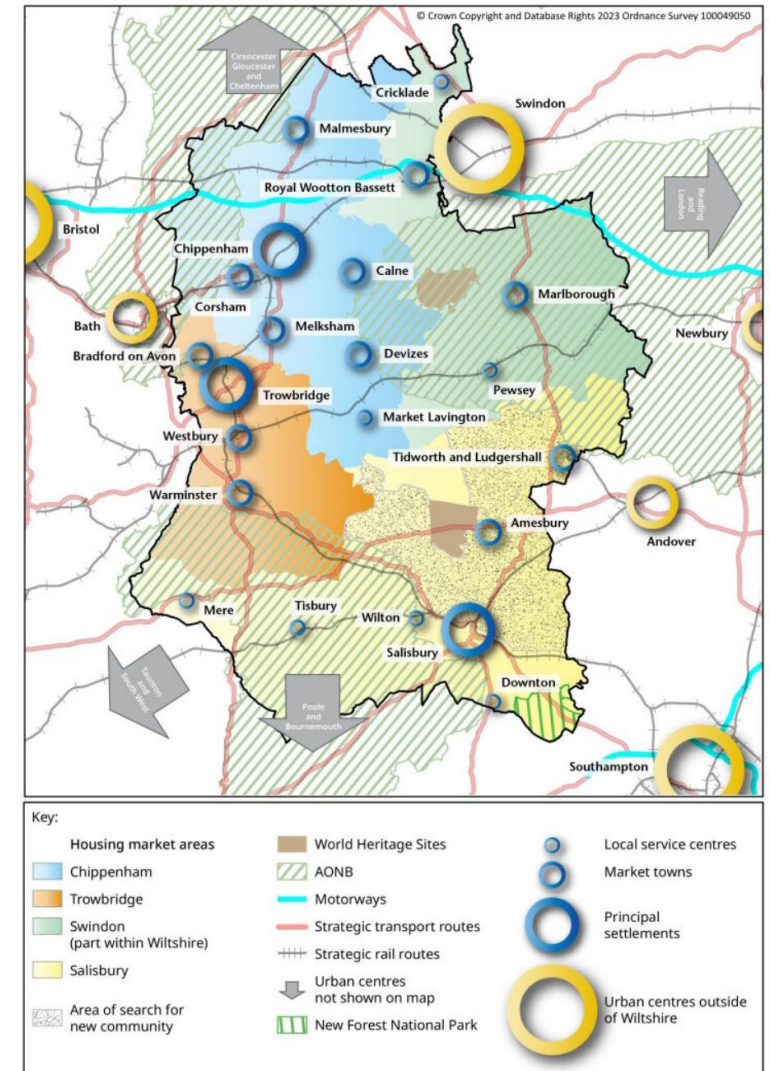
Presentation overview

- Wiltshire: the strategic context
- Our Business Plan Priorities
- Funding and Scheme Delivery
- Horizon Scanning
- Procurement
- Apprenticeship programme
- Q&A



A spatial portrait of Wiltshire

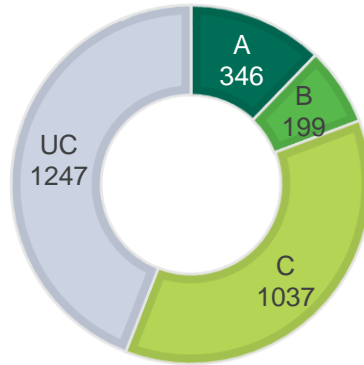
- Over 510,000 residents
- Over 1,257 square miles
- Resilient economy
- Largely rural with many natural and historic features
- While deprivation is general low, there are pockets in some areas including Salisbury and Trowbridge



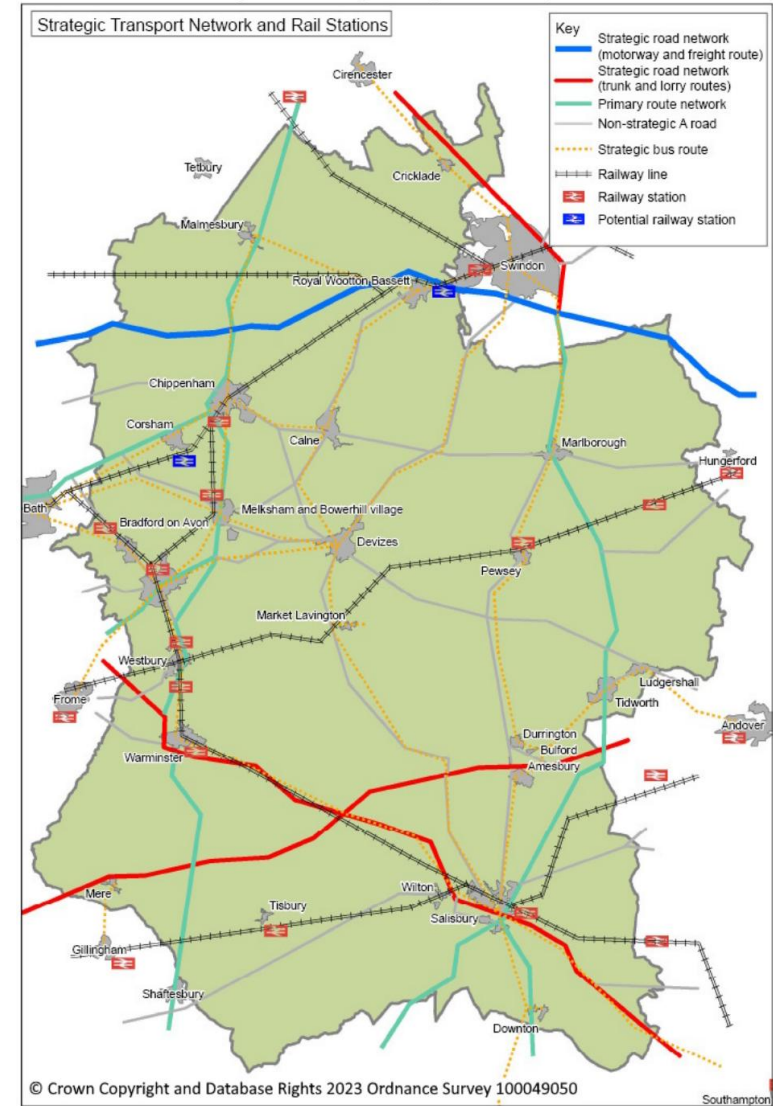
'Highways and Transport Matters'

Over 2,800 miles of road and 90,000 gullies

Miles of road broken down by class



'Nigel Havers exposes Wiltshire's pothole problem: The veteran actor takes The Telegraph on a tour of his local pothole-ridden roads' – January 2025



Wiltshire Council

Business Plan Priorities

A 'One Council' approach to advancing highways and transport in Wiltshire, delivering our Business Plan priorities, and improving outcomes for residents, businesses and visitors

Our mission



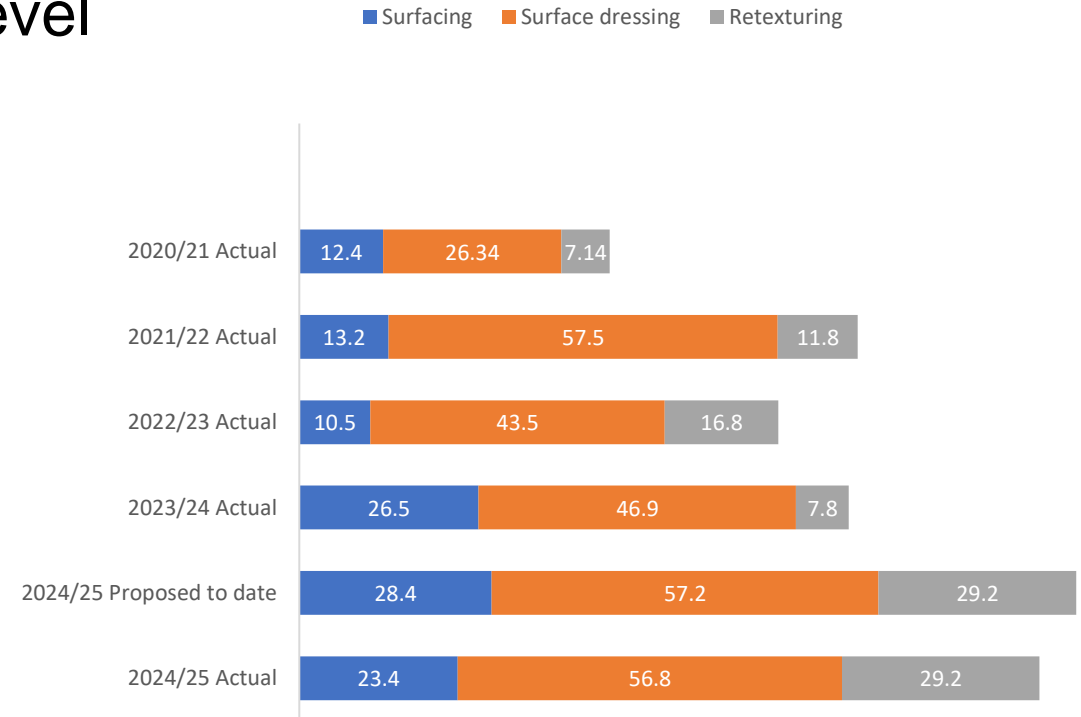
● Thriving Economy ● Resilient Society ● Sustainable Environment ● Empowered People

Wiltshire Council

Funding

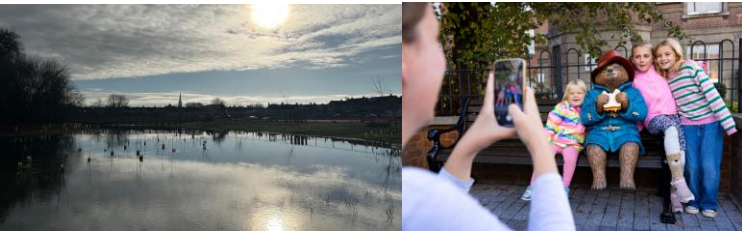
- 24/25 - c£30m plus additional £10m at local level
- 25/26 - c£30m plus additional £10m at local level
- Local Electric Vehicle Infrastructure Funding
- Bus Service Improvement Plan
- Additional funding:
 - environmental enforcement
 - Sign replacement programme

Length of carriageway resurfaced (miles)



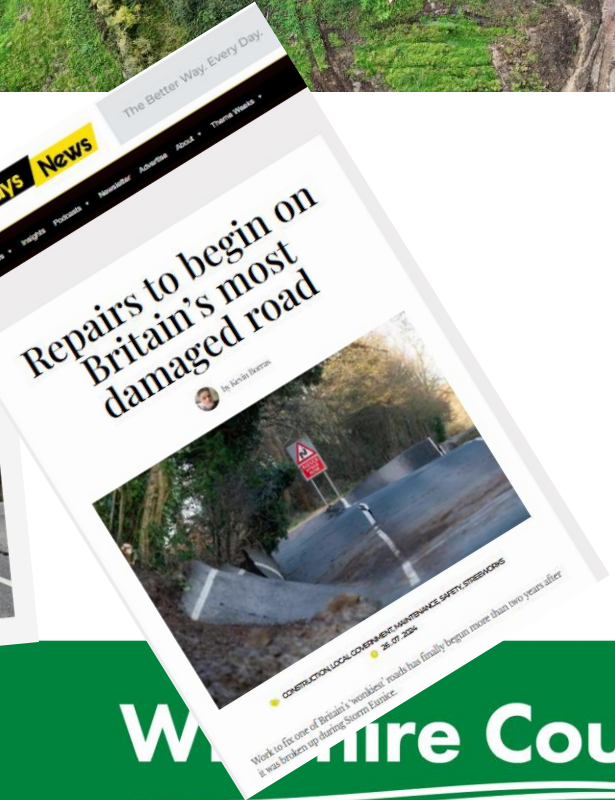
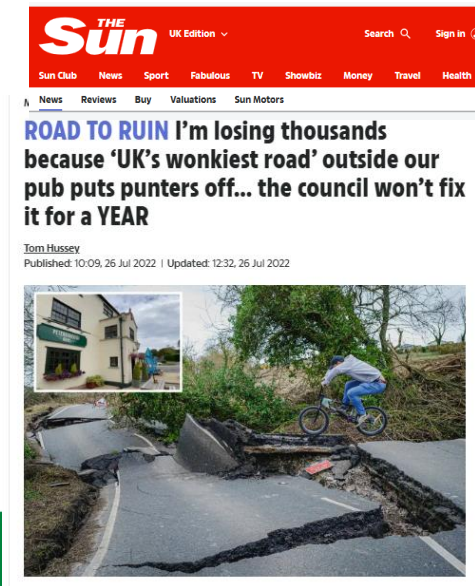
Scheme Delivery

- Salisbury: River Park, Fisherton Street and Station Forecourt
- Active Travel
- Local Highway and Footway Improvement Schemes
- Sign replacement programme



Wiltshire Council

Lyneham Banks

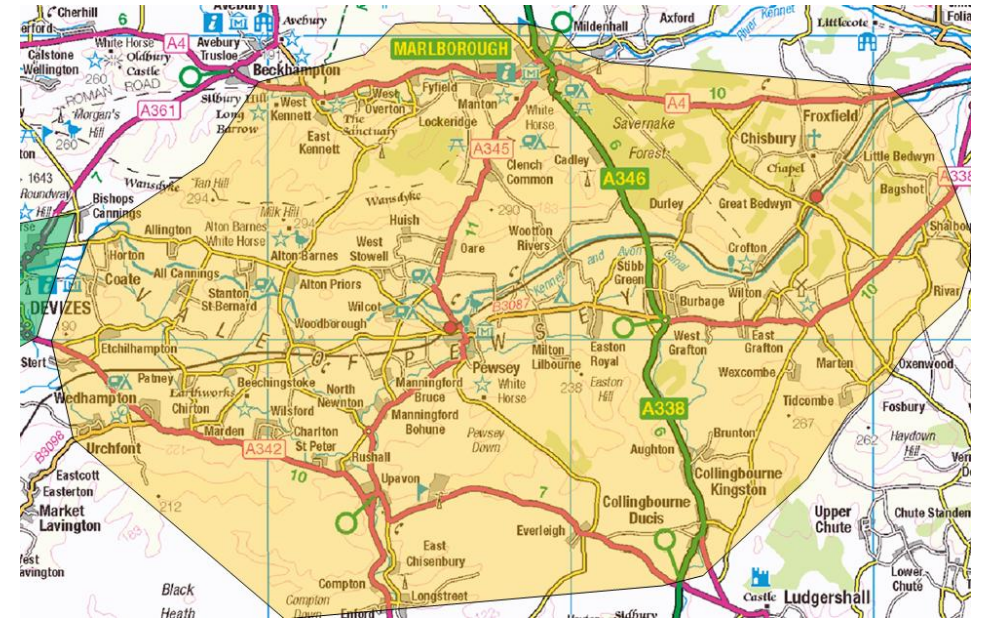


Digital Demand Responsive Transport

- £1.2m initial grant to pilot digital demand responsive transport in the Pewsey Vale
- Additional funding from the Council's local bus revenue budget to support the project.

Aims

- Improve accessibility and rural mobility,
- Help tackle social exclusion,
- Improve journey times and reliability,
- Reduce carbon emissions, making a contribution to tackling climate change,
- Improve connectivity between bus and rail
- Enable more combined trips.



Wiltshire Council

Horizon scanning

- Local Plan - +83% new Standard Method and employment opportunities at M4/A350
- LTP4 adopted March 2025: [Find out more about our Local Transport Plan \(LTP4\)](#)
- Improved network resilience and condition
 - A303 Stonehenge
 - M4 to South Coast Study
 - Wiltshire Strategic Rail Study
- 400 LHFIG schemes plus Active Travel
- Local Electric Vehicle Charging
- DRT expansion – north and south west Wiltshire areas
- Zero Emission Bus Regional Area (ZEBRA)
- Strategic Operational Depot Strategy - £30m for Melksham



Procurement

- New Procurement Act
- Importance of social value and innovation
 - Collaboration Framework
 - Edie Net-Zero shortlisting - ***Supply Chain Decarbonisation Project of the Year***
 - Wiltshire Highways Sustainability and Carbon Reduction Event



Apprenticeship Programme

- 190 apprentices across the Council (L2 to L7), 33 recently recruited
- 17 in Highways and Transport, 8 are civil engineers
- Aiming for 5% of FTE, currently at 3.5%
- Work experience and T-level
- Importance of partners and our supply chain



#WeAreWilts

**Thank you.
Any questions?**