

SUFFOLK CHAMBER SUPPLY CHAIN ENGAGEMENT



WORKING WITH SIZEWELL C

Thank you for your patience

This event will begin shortly

SUFFOLK CHAMBER SUPPLY CHAIN ENGAGEMENT



WORKING WITH SIZEWELL C

An introduction to the Civil Works Alliance

Suffolk Chamber business support programme

SUFFOLK CHAMBER SUPPLY CHAIN ENGAGEMENT



WORKING WITH SIZEWELL C

Ashley Shorey-Mills

Supply Chain Engagement Director – Suffolk Chamber of Commerce

This morning's agenda

Introduction	Ashley Shorey-Mills	10.00am
Suffolk Chamber role	Ashley Shorey-Mills	10.05am
Introducing Sizewell C and the CWA	Dave Speight	10.10am
CWA Overview	Mick Jennings	10.20am
Enabling & Earthworks	Derek Orr	10.30am
Marine and Tunnels	Derek Orr	10.45am
Systems and processes	Daniela Caso	11.00am
Social impact	Jessica Rivers	11.15am
What's next	Olivia Cairney	11.30am
Q&A	Ashley Shorey-Mills	11.45am

Who are the Suffolk Chamber Supply Chain Engagement team?

- 8th largest Chamber of Commerce in the UK
- Working with Sizewell C since 2012 and more recently in discussions with cross sector organisations and developers regarding projects and opportunities
- Run the local and regional engagement programme including sizewellcsupplychain.co.uk
- Currently supporting over 3,000 businesses employing over 900,000 people
- Team of 6 dedicated to working on the Sizewell C Supply Chain engagement project
- Connected to the wider chamber network to add reach and success
- Supporting growth in skills, social value, community engagement, policy, stakeholder management, resourcing and location etc

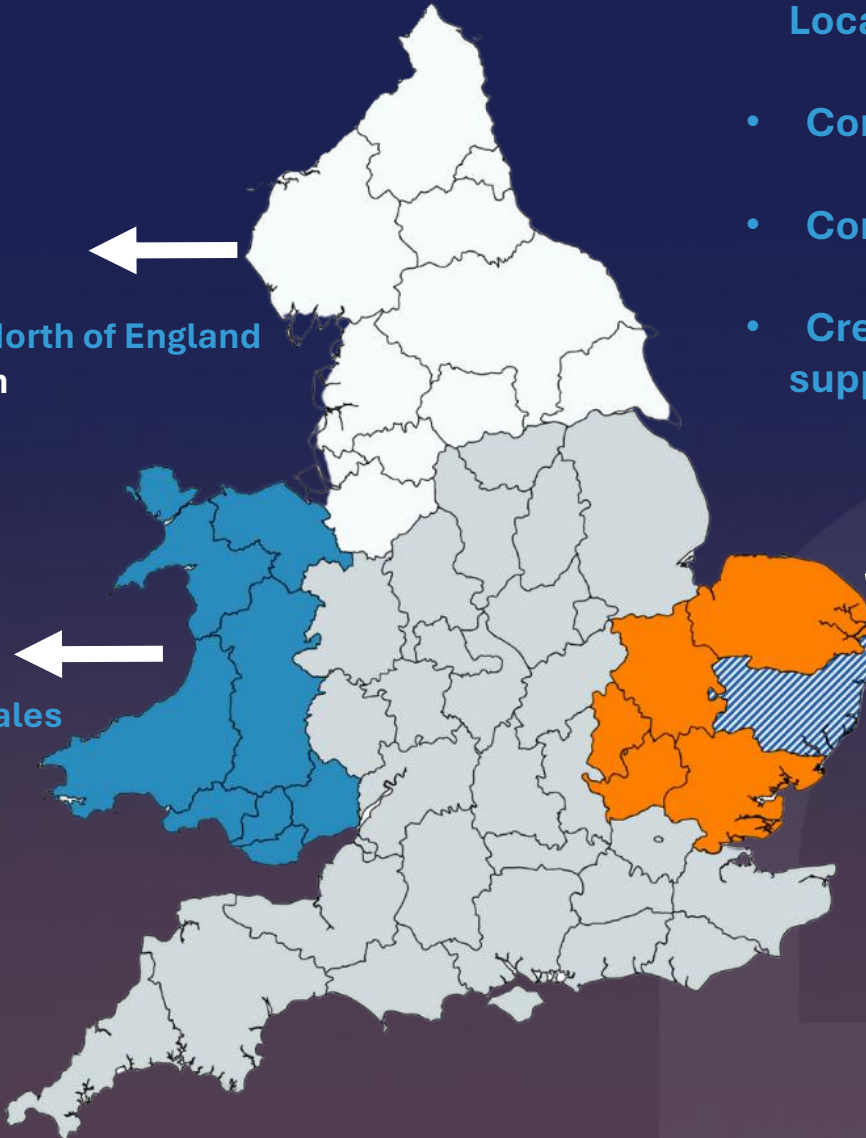


Sizewell C - The national commitment

- 70% UK content overriding aim, prioritising Local > Regional > National
- Core commitments aligned to UK levelling up agenda
- Considering future nuclear supply chain and needs of GBE-N
- Creating partnerships, sharing expertise and re-building nuclear supply chain

£2.5bn

To be spent in the **North of England** during construction



£900m

To be spent in the **Wales** during construction

£4.4bn

To be spent in the **East of England** during construction

£2.0bn

To be spent in the **Suffolk** during construction

(N.B. a subset of East of England not additional)

Summary of Key ESG social value themes

SZC has developed 5 Environmental and Social Governance (ESG) Supply Chain Goals to identify key areas where the supply chain can help deliver the Strategic Aims.



Goal 1: Increase UK content

By championing UK content in the supply chain, and prioritising local, regional, and then national spend where possible



Goal 2: Invest in education, employment and skills

By identifying job opportunities and skills training and apprenticeship opportunities



Goal 3: Reduce the environmental impact of construction

By identifying and acting on opportunities to leave a strong environmental legacy as well as mitigating our impact on the environment.



Goal 4: Tackle workforce inequality

By creating a diverse and inclusive workplace which employs local people, engages young people, takes steps to engage hard-to-reach-groups and promotes health and wellbeing



Goal 5: Optimise opportunities for local communities

By providing opportunities in the region and supporting initiatives that improve outcomes for local communities

Suffolk Chamber key priorities

Local

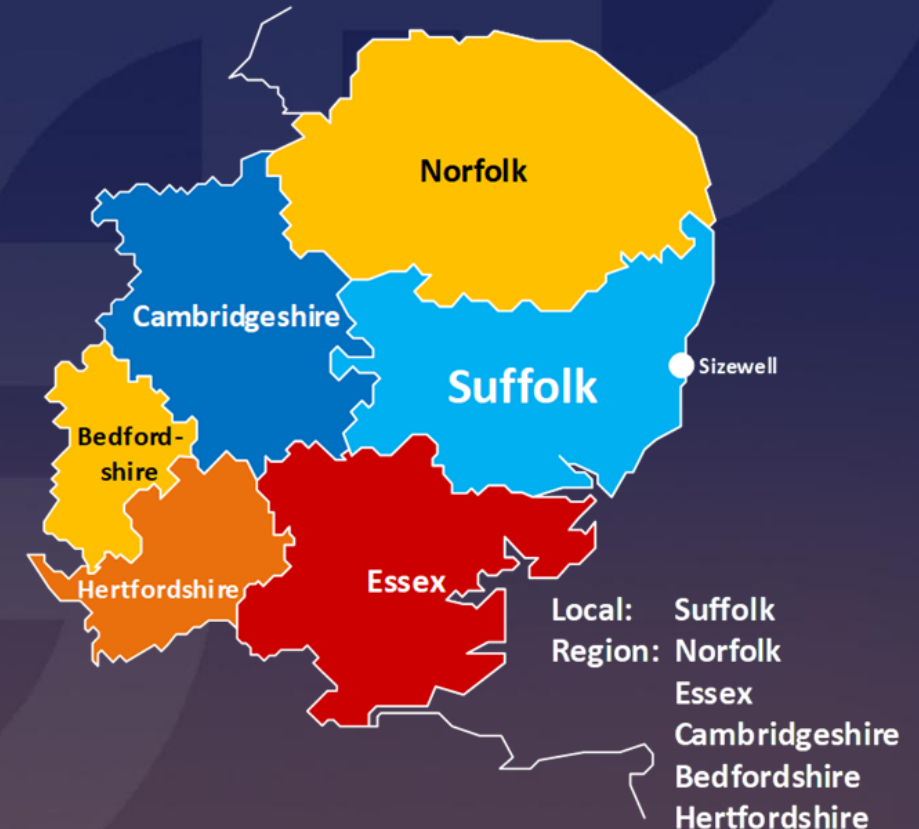
- Local jobs - Employing people from this region
- Local skills - Expanding & training of new and existing workforce
- Local opportunities – Projects on and off site across the region
- Joint ventures – Fostering collaboration over competition

Legacy

- Positive and enduring impact for the area & region
- Building a business community fit for future growth
- Preparing Business for large infrastructure projects
- Increasing Diversity and Inclusivity in the workplace
- Improving health, wellbeing and community cohesion
- Facilitating sustainable and proportionate growth & positioning

Environment

- Contributing to the UK's 2050 net Zero ambitions
- Reducing environmental impact and promoting increases in biodiversity



Supply Chain Guidance

– Supporting the Supply Chain

Our Engagement and support work extends to all sectors and all sizes of business. It is about identifying the need and finding the support and advice that is most needed for local and regional businesses, whilst also supporting the larger tier 1's

- Intro's & Recommendations to Alliance and Tier 1's
- Events and Engagement
- Nuclear Culture and practices
- Health & Safety and Compliance
- Contracting standards and requirements
- Funding and Training
- Collaboration & JV's
- Innovation support
- Supply Chain Portal
- Social Value & ESG
- Celebrate Success



Supply Chain Guidance

The Suffolk Chamber of Commerce provides a Local & Regional Supply Chain Engagement Team working with Sizewell C to inform and mobilise companies to contribute and take advantage of the opportunity that the Project offers our region

All Events

The programme of events will be planned to meet a range of needs for the business community and the work package requirements will be in line with the eventual project timetable.

[ALL EVENTS](#)[EXHIBITIONS](#)[IN-PERSON](#)[WEBINARS](#)[WORKSHOPS](#)[SIZEWELL C OPPORTUNITIES](#)[NEWS](#)[COMPETEFOR](#)[COMPETEFOR: STEP-BY-STEP ACCESS GUIDE](#)[SUPPORT](#)[EVENTS](#)[FAQs](#)[CONTACT](#)[SIZEWELL C – ALL SUPPLIER WEBINARS THAT FOCUS ON THE SUPPLY CHAIN](#)[SUFFOLK CHAMBER SUPPLY CHAIN ENGAGEMENT BUSINESS SUPPORT PROGRAMME](#)[FUNDING & RESOURCES](#)[SKILLS & TRAINING](#)[JOB SERVICE PORTAL](#)[PROCUREMENT & BEST PRACTICES](#)[SIZEWELL C COMMUNITY FORUMS](#)

Sizewell C Opportunity Portal

CompeteFor – Sizewell C Microsite

Sizewell C opportunities are now being advertised on CompeteFor, to respond you are required to register on CompeteFor.

<https://www.competefor.com/business/>

Once registered on CompeteFor you will then need to complete & publish your business profile for your organisation to be business ready and therefore allow you to respond to opportunities.

It is important when logged in to CompeteFor to complete your [email alert profile](#) to keep up to date with opportunities that may be of interest to you. To find videos for setting up your business profile & email alerts, please visit <https://www.competefor.com/video-guides/>

Forward Look & Contract Awards

Official partner of CompeteFor The UK supply chain portal Login Register

Sizewell C Supply Chain Portal

Home Opportunities Awardee Information Project News Events About

Sizewell C is a landmark project to plan, design and build two EPR™ nuclear reactors on the East Coast of Suffolk, England. It will deliver nuclear electricity at a cost that is competitive with other low-carbon sources and will generate 7% of the UK's energy, with a capacity of 3,260 MWh.

A dramatic reduction in carbon is required to meet the UK's 2050 Net Zero commitment. Nuclear power generation can play a key part in the UK's energy mix, providing affordable, reliable low-carbon energy. The development of Sizewell C offers a unique opportunity for the UK to take control of its future energy needs, help tackle climate change and power jobs and industry up and down the country.

Registering your business on our portal is the first step in joining our supply chain and tendering for opportunities.

[Register Now](#)

Sizewell C ESG Supply Chain Delivery Goals

Sizewell C has developed five ESG Supply Chain Goals that pinpoint key areas where the supply chain can contribute to achieving the project's Strategic Aims. To meet these goals, certain requirements, including reporting obligations, need to be communicated throughout the supply chain.

[ESG Supply Chain Delivery Goals](#) [Guidance for Suppliers](#) [Wild East Toolkit](#)

Sizewell C Procurement Overview

Sizewell C has developed procurement plan, presenting a forward look at anticipated procurement activity across the project. This commercial lookahead, refreshed quarterly, outlines contracts expected to be procured within the next six months. Publication of this pipeline does not imply a commitment to contractual arrangements or proceeding with procurement, as circumstances may change, affecting requirements, values, and timelines.

[Procurement Overview](#) [Awarded Contracts](#)

Latest 10 opportunities [View all >](#)

MBIF Guardrails and Handrails Supply Deadline: 20/06/25	More info
SZC - Steel Cylinder Concrete Pipes Deadline: 11/06/25	More info
Sizewell C - Super Duplex Embedded Items (Including Lifting Lugs) Deadline: 19/06/25	More info
Fuel Distribution Facility Deadline: 28/05/25	More info
Accommodation Campus - Amenity Building Roofing Deadline: 30/05/25	More info
Fuel Supply and Fuel Facility Deadline: 28/05/25	More info
Accommodation Campus - Amenity Building Facade/Glazing Deadline: 30/05/25	More info
Accommodation Campus - Accommodation Buildings Foundations Deadline: 30/05/25	More info
Accommodation Campus - Accommodation Buildings Facade Deadline: 30/05/25	More info
Accommodation Campus - Accommodation Buildings Bathroom Pods Deadline: 30/05/25	More info

[View all opportunities](#)



Introducing the Project

David Speight - Civil Works Programme Director

The Project



Sizewell C will see the creation of a **3.2** Gigawatt nuclear power station on the Suffolk coast to provide reliable base load low-carbon electricity

As a close copy of Hinkley Point C, Sizewell C will benefit from the efficiencies that come from replication. The benefits of replication are already being seen in efficiencies between Units 1 and 2 at HPC.



SZC will create **1500** new apprenticeships

... of which **575** will be offered by the **Civil Works Alliance**

Sizewell C will supply power to **6 million** homes and generate electricity for **60 years**



Sizewell C will save **9 million** tonnes of CO₂ emissions for every year of its operation (compared with 3.2 Gw of gas-fired generation)



Sizewell C will support around **70,000 jobs** up and down the country

40% target of women in the nuclear industry by 2030



The CWA will commit to the employment of:

25% local and **30%** regional skills



£125 million

per year boost for East of England economy during core construction



Up to

£4.5 billion

to be invested in East of England over lifetime of Sizewell C



The Journey



Sizewell C nuclear power station is a project to construct a 3.2 Gigawatt nuclear power station with two EPR reactors in Suffolk, England.

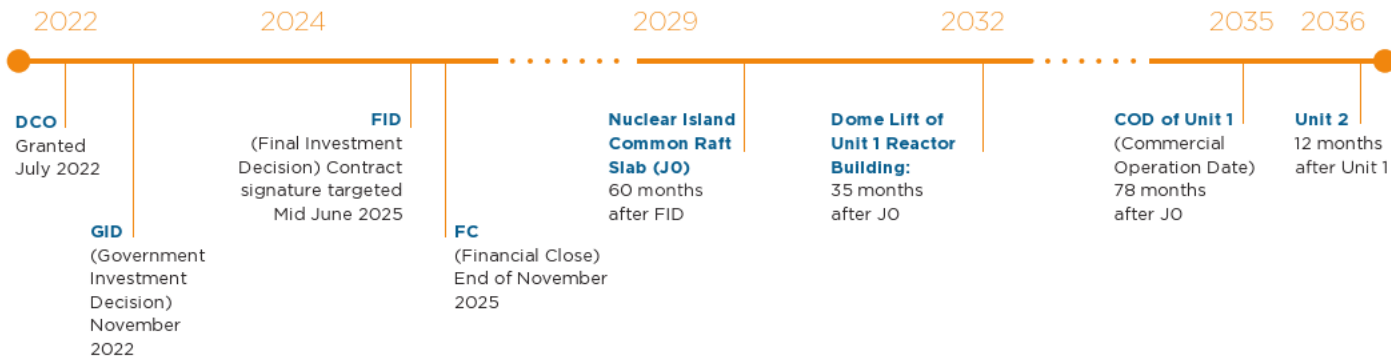


Sizewell C is being built next to two existing plants, A and B.

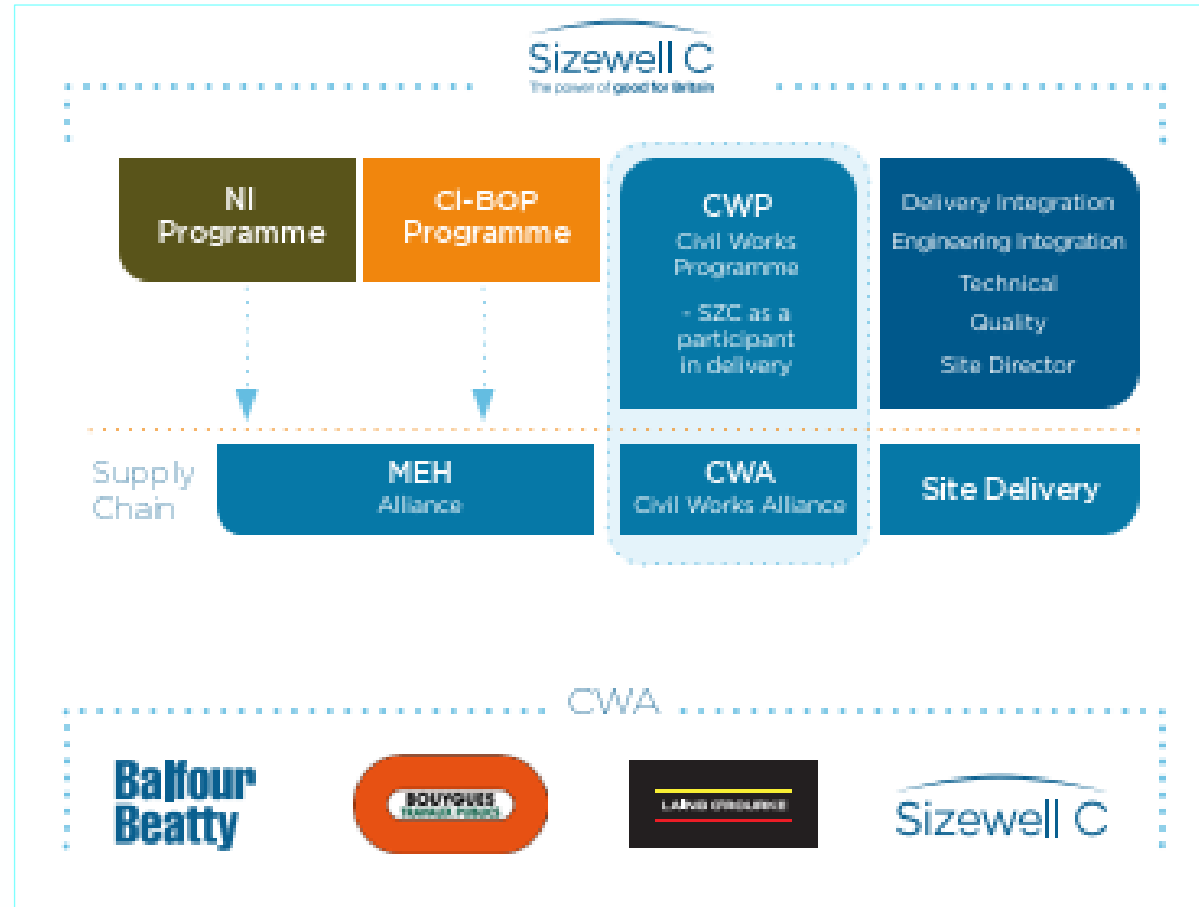


The Sizewell C project is expected to take between nine and twelve years to construct and commission.

Key Dates



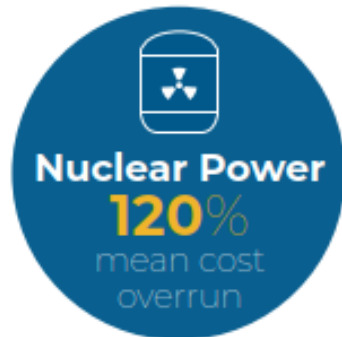
Introducing Civils Works Alliance



Why an Alliance?

With traditional contract, what is Predictable is not what is Desired

- Construction has achieved a productivity growth of circa 1 percent annually for the past twenty years - we need 20%.
- Traditional win/lose (zero sum) procurement models have proven inadequate.
- Cooperation is the key ingredient of project success.
- The procurement model structures how cooperation is nurtured or disincentivised on a project.



What are top 6 features of the Sizewell C Project that make an Alliance approach the right approach?

- 1 Focus on Outcomes**
Prioritises the best possible project outcomes rather than adhering strictly to predefined processes.
- 2 Collaboration and Teamwork**
Encourages close collaboration among all parties, fostering a unified approach to achieving project goals.
- 3 Shared Risk and Reward**
Aligns the interests of all participants by distributing risks and rewards equitably, promoting a focus on collective success.
- 4 Innovation and Flexibility**
Facilitates innovative solutions and adaptability, allowing for adjustments as project needs evolve.
- 5 Increased Efficiency**
Reduces disputes and delays by encouraging open communication and problem-solving, leading to more efficient project delivery.
- 6 Enhanced Trust and Transparency**
Builds strong relationships and trust through transparent processes and shared objectives.



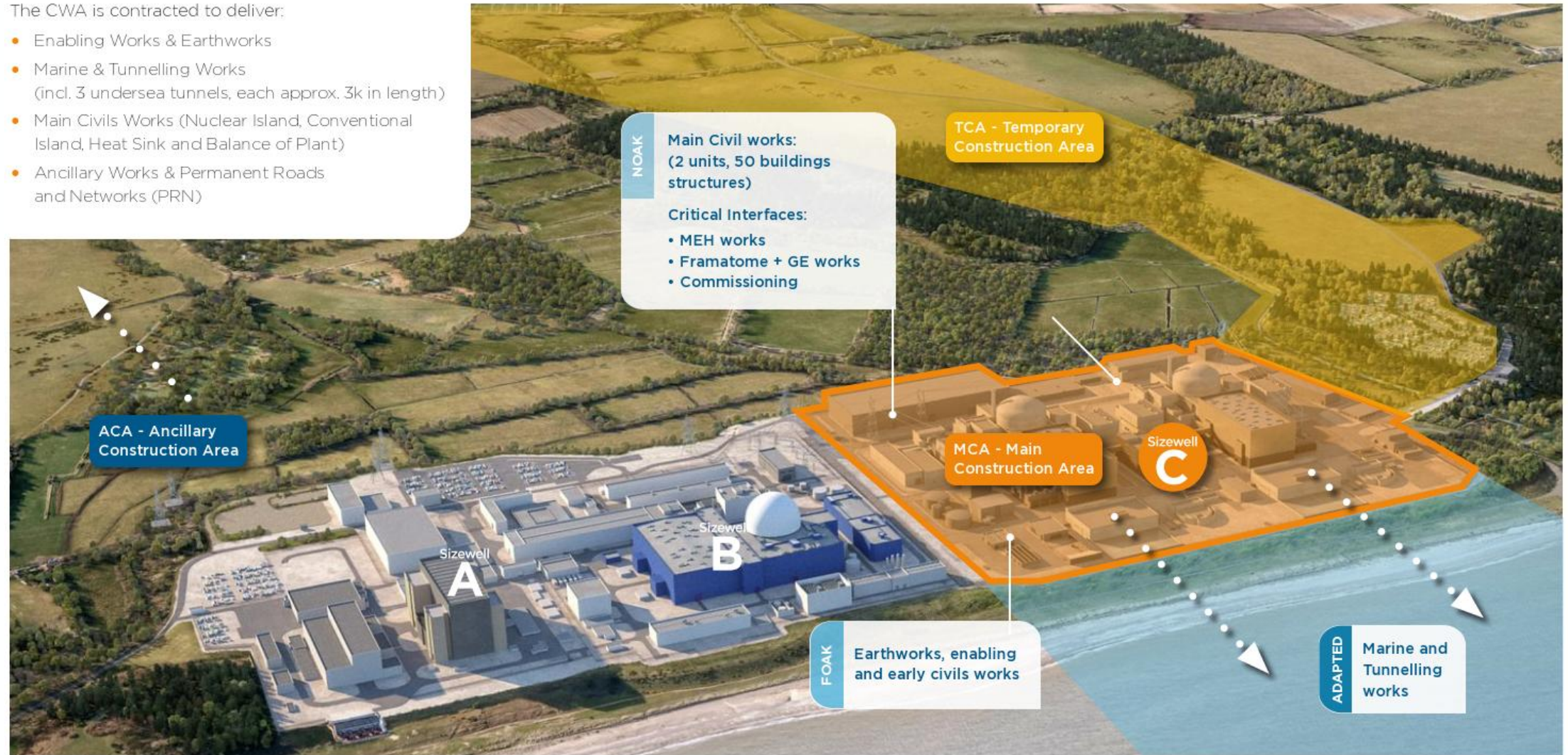
Overview

Mick Jennings - CWA Procurement Lead

What's the Scope?

The CWA is contracted to deliver:

- Enabling Works & Earthworks
- Marine & Tunnelling Works
(incl. 3 undersea tunnels, each approx. 3k in length)
- Main Civils Works (Nuclear Island, Conventional Island, Heat Sink and Balance of Plant)
- Ancillary Works & Permanent Roads and Networks (PRN)



Key

FOAK

FIRST OF A KIND

NOAK

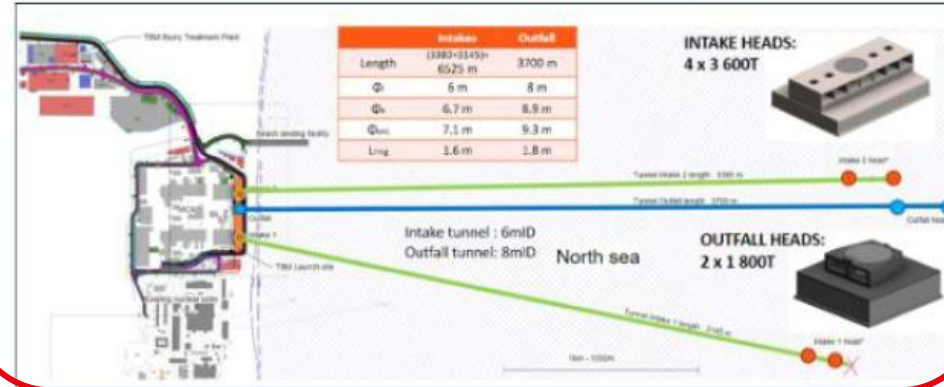
NEXT OF A KIND

ADAPTED

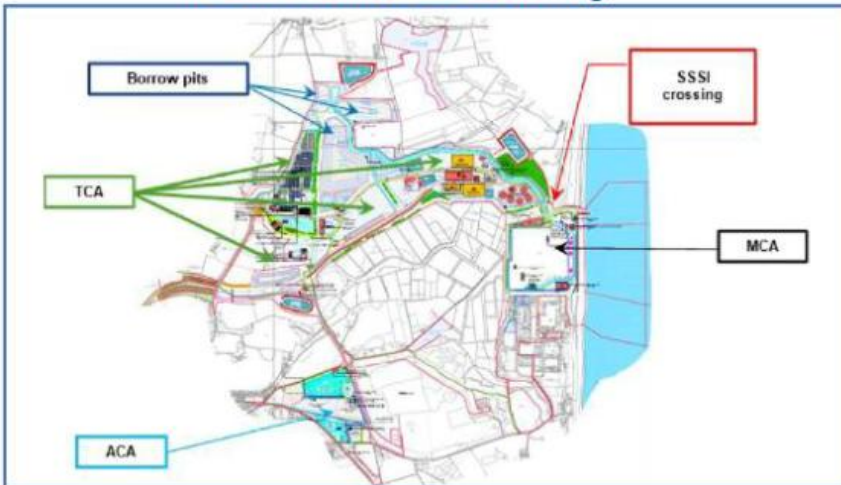
Enhanced from FOAK for SZC Conditions

What's the Scope?

Marine & Tunnelling



Earthworks & Enabling



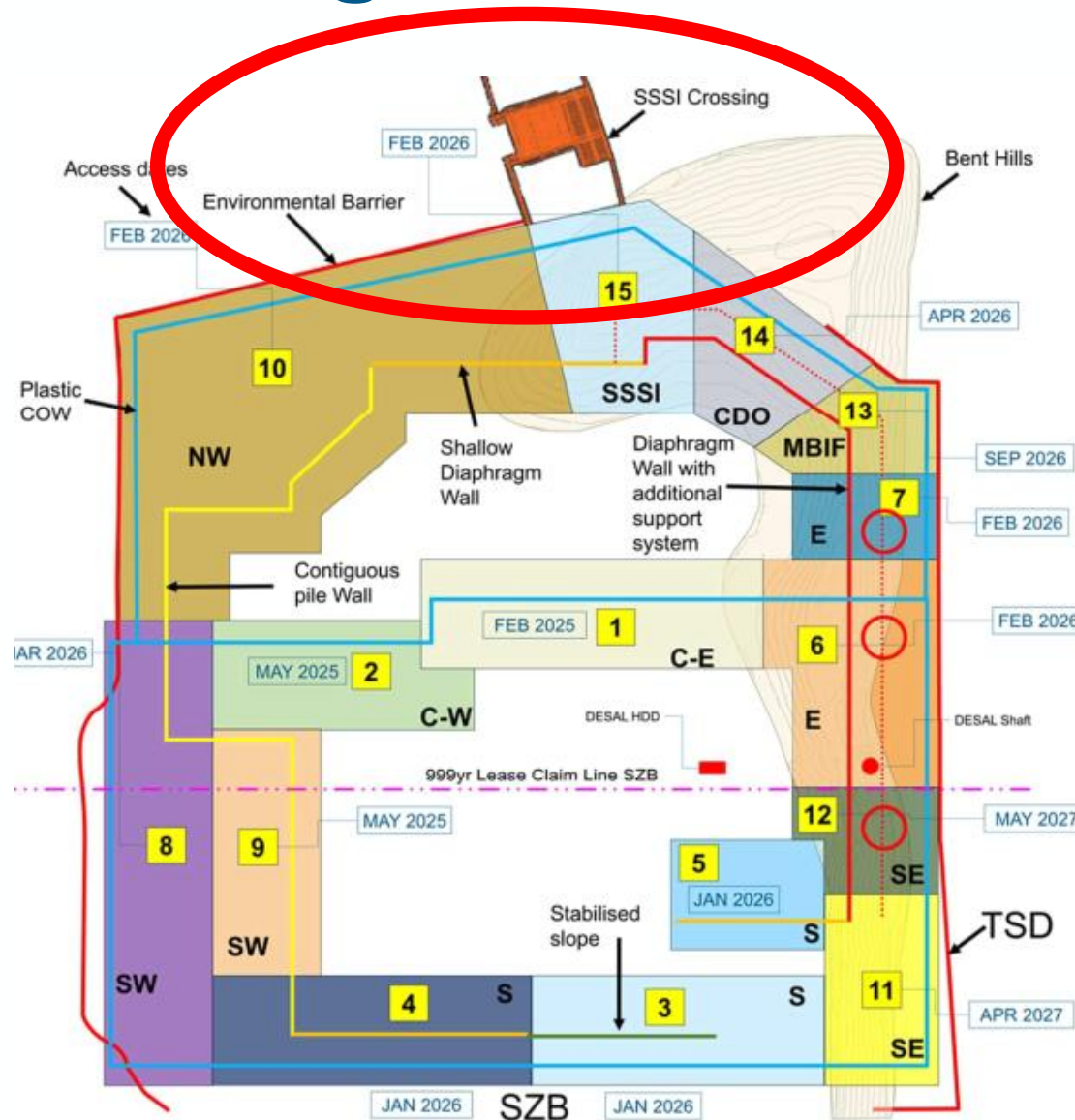
Main Civil & Ancillary Works



Enabling and Earthworks

Derek Orr - Project Director- Marine and Tunnel, Enabling Works and Earthworks

Enabling & Earthworks – SSSI Crossing




ArcelorMittal

 **LAND & WATER**

 **JANSON BRIDGING**
COME ACROSS

Balfour Beatty
Ground Engineering

 **expanded**

Sheet Piling Material £8m

SSSI Drain Diversion & Environmental Barrier
£29m

Bailey Bridge £1.4m

Ground Improvement £10.5m

SSSI Civils & Abutments £21.6m

Enabling & Earthworks – Ground Improvement

Balfour Beatty
Ground Engineering

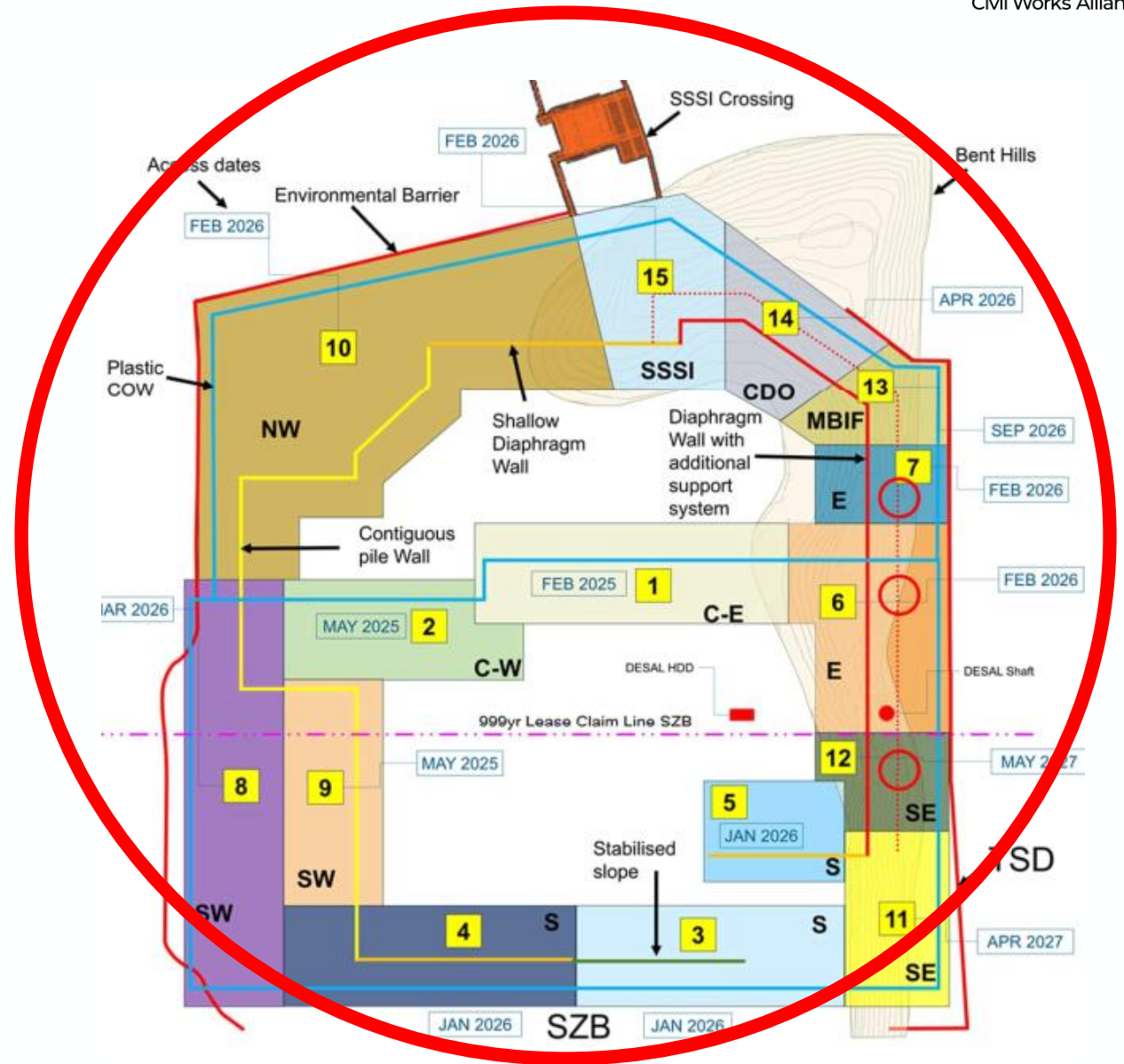
Early Geotech – DSM £18m

expanded

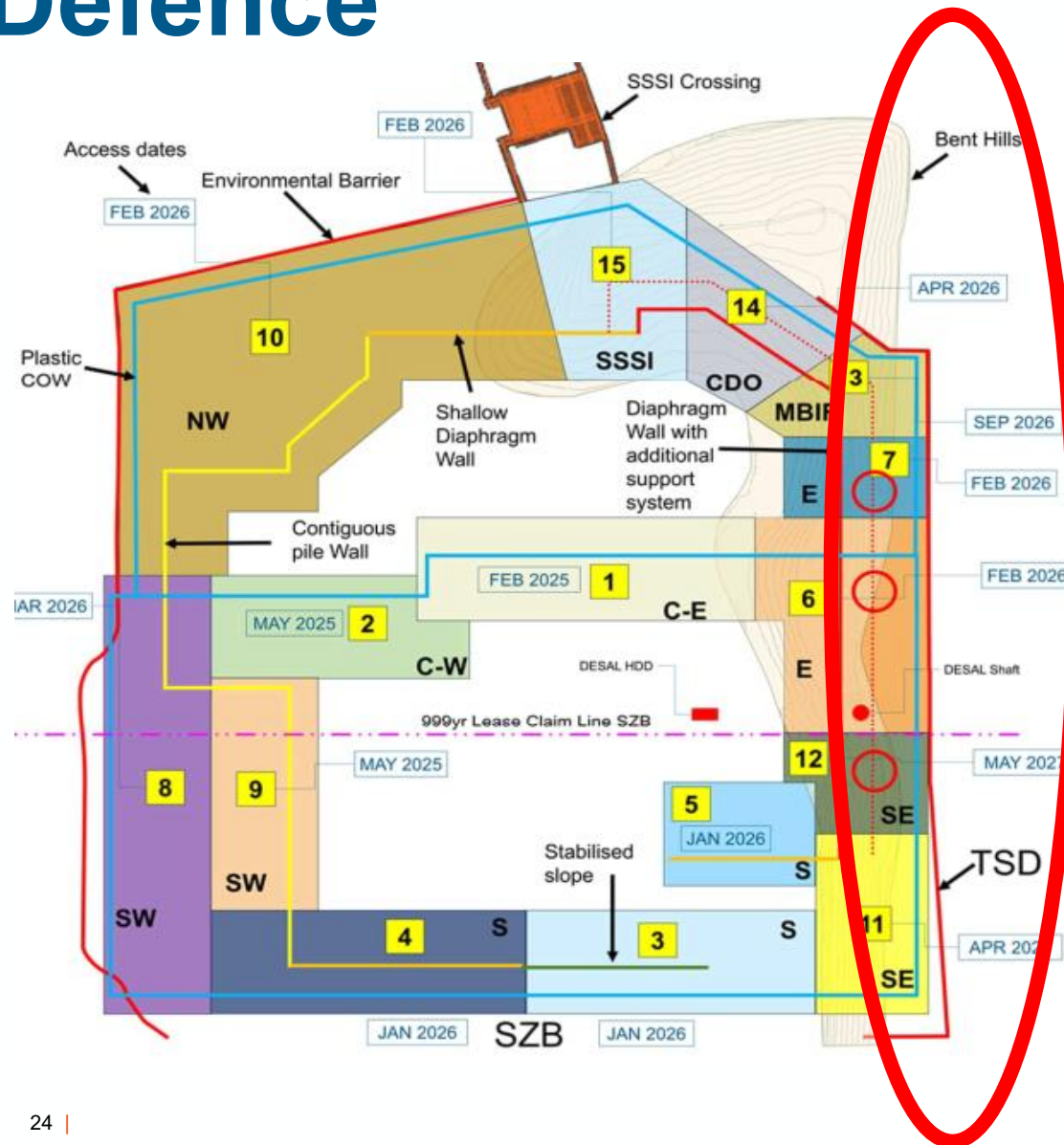
Early Geotech - DSM & CSM £29m

VSL
A member of
Bouygues Construction

Early Geotech – Plastic Wall & CSM £37m



Enabling & Earthworks – Temporary Sea Defence




ArcelorMittal

 **VolkerStevin**

Sheet Piling Material £8m

Temporary Sea Defence
Installation £3m

E & EW – MBIF / CDO / Marine - 2025



Tier 2 Supply Chain being developed:

- Specialist welders
- Safety Boat
- Guards and handrails
- Small power / lighting
- Fenders and bollards
- Offshore Dredging

Horizontal Directional Drilling £60m

MBIF Superstructure (Cantitravel Operation) £23m

MBIF Jetty Head Installation

Structural Steel £10m

Precast Concrete Deck £4m

Tubular Piles £5m

 **VolkerStevin**

 **BACHY SOLETANCHE**

 **VolkerWesselsUK**

HARE

BANAGHER
PRECAST CONCRETE 


ArcelorMittal

E & EW – BLF - 2026



Maritime Work £8m

Marine Dolphins and Mattress £45m

Miscellaneous Metals

Structural Steel £20m

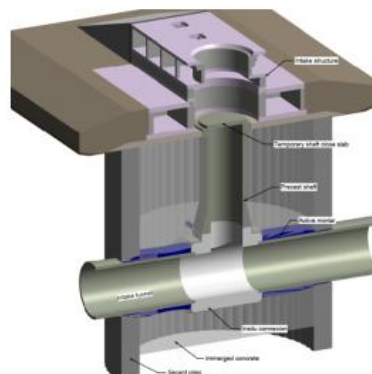
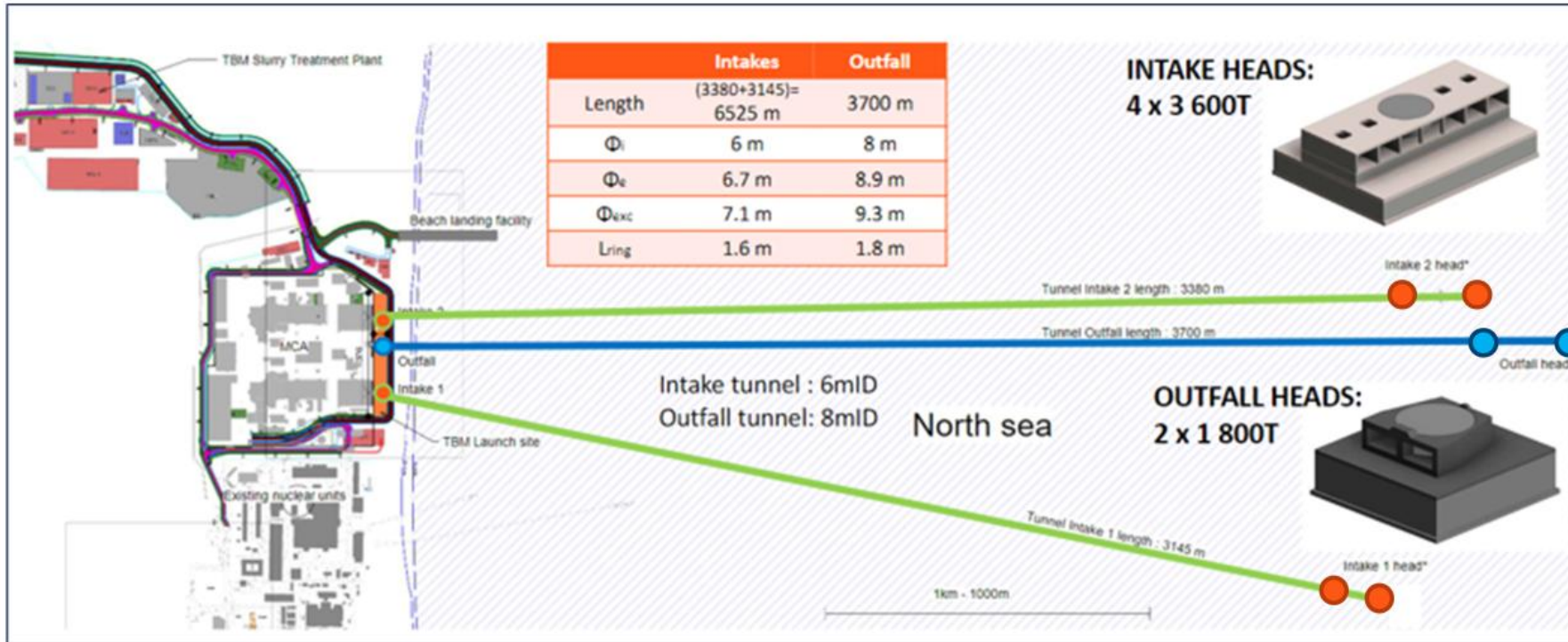
Precast Concrete Deck £8m

Tubular Piles £25m

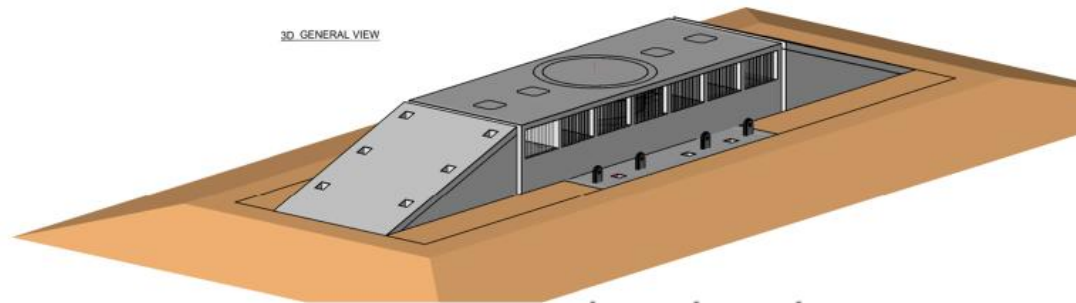
Marine and Tunnels

Derek Orr - Project Director- Marine and Tunnel, Enabling Works and Earthworks

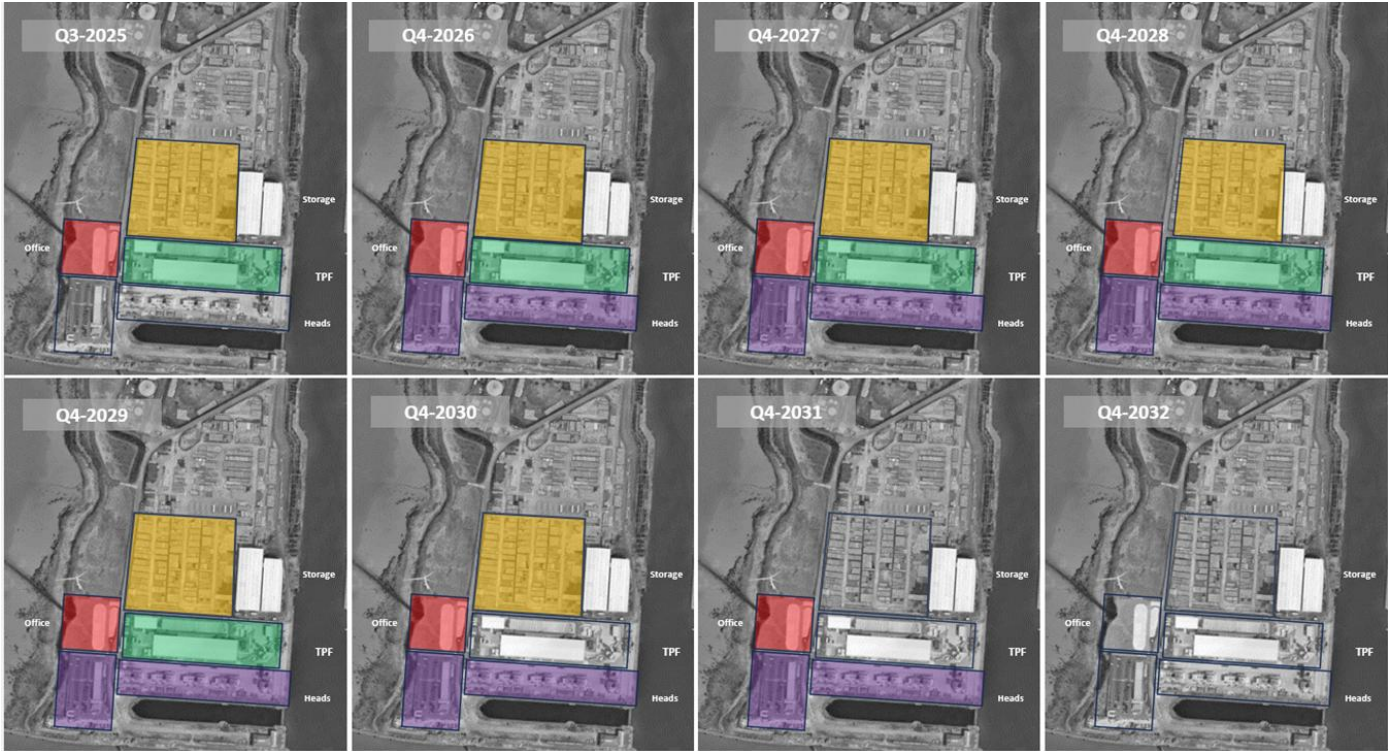
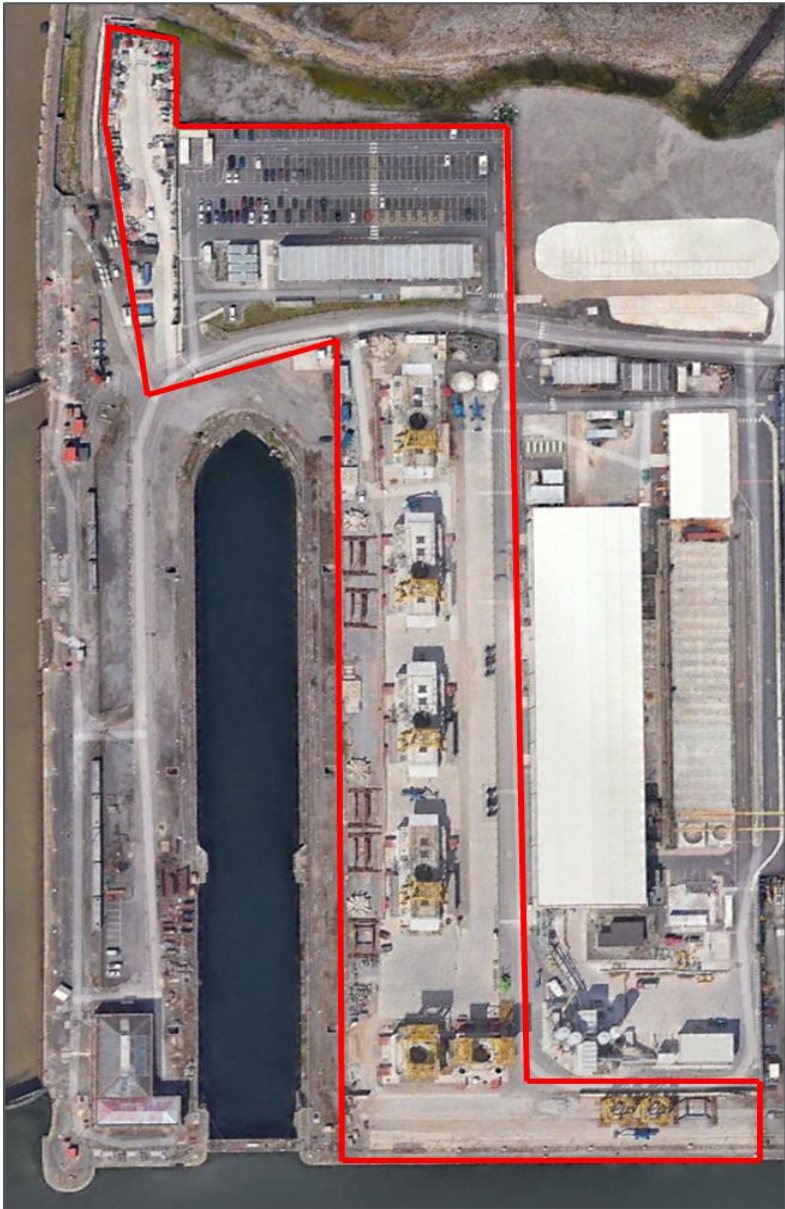
Marine & Tunnels



3D GENERAL VIEW



Avonmouth – Heads and Tunnel Segments



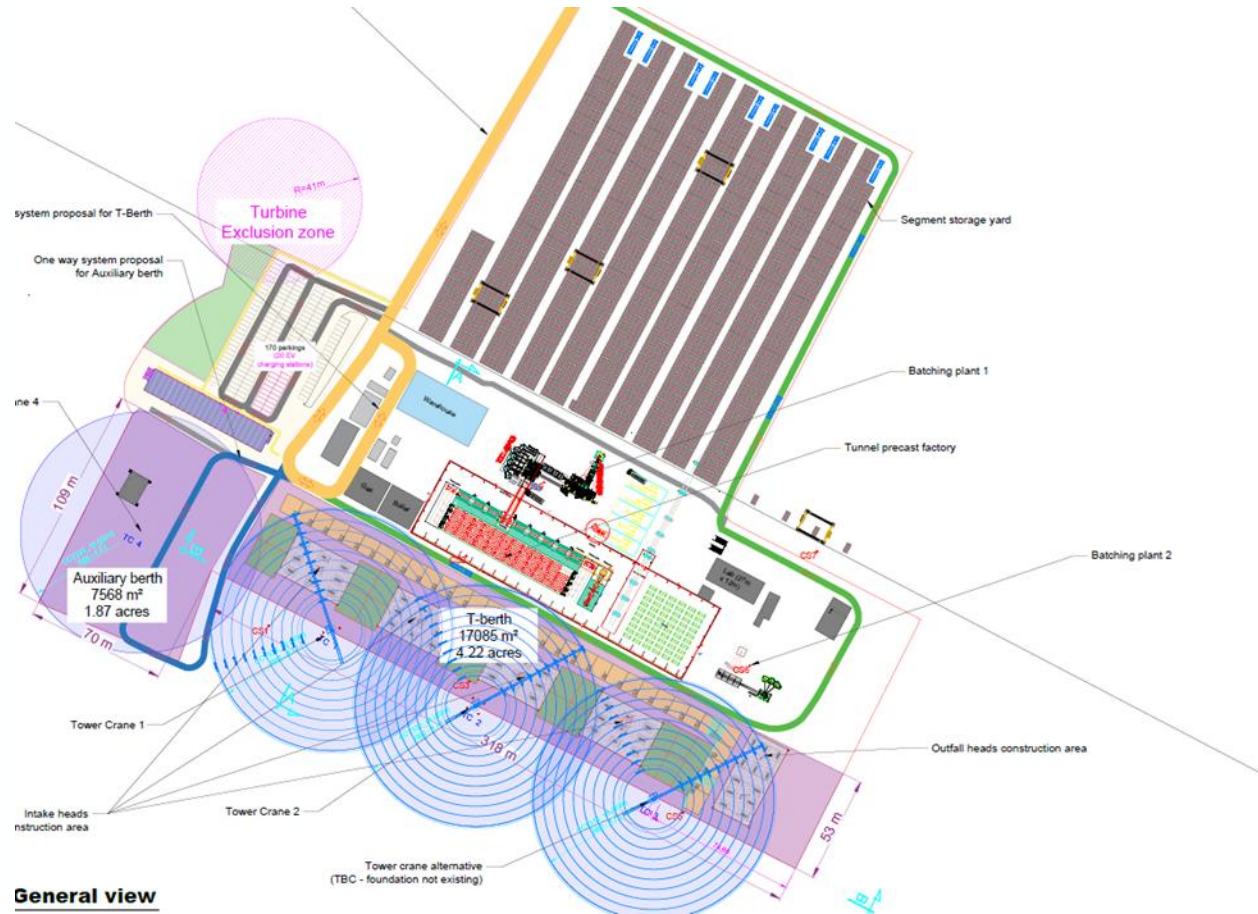
Phased Handover

Avonmouth – Future works



“Building the team for Success”

Avonmouth – Proposed Layout – 2025 / 2026



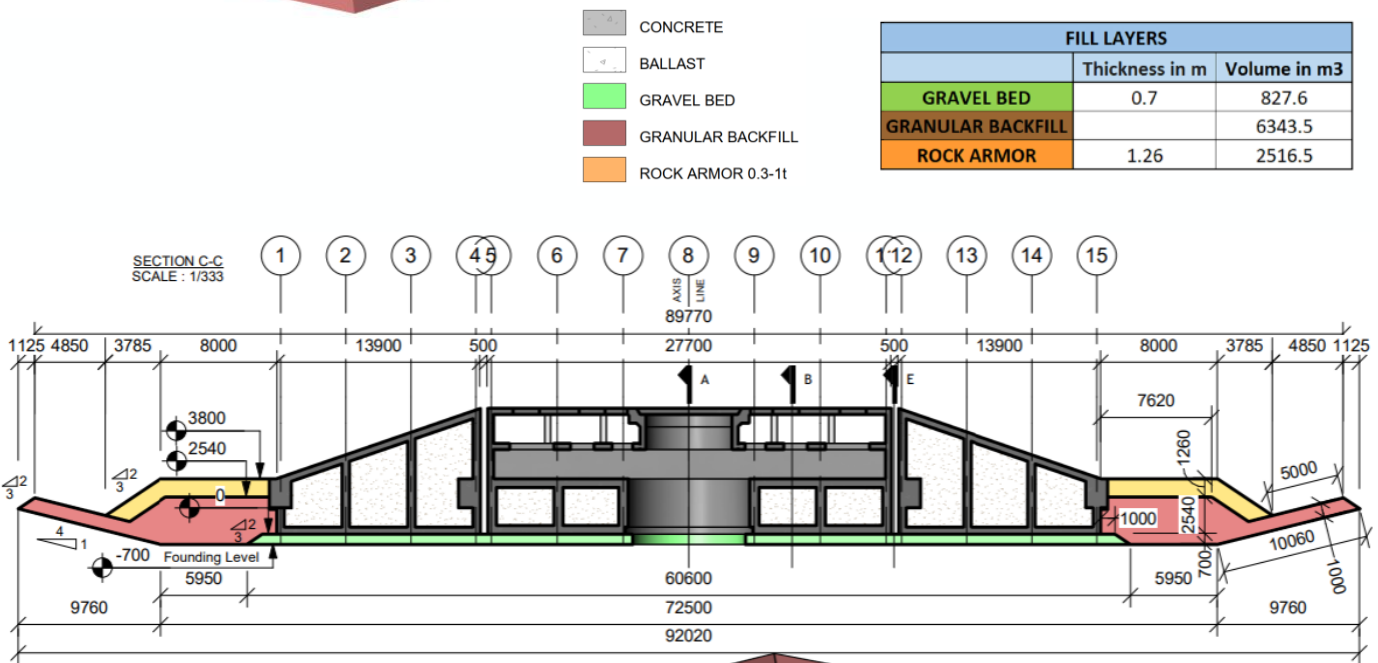
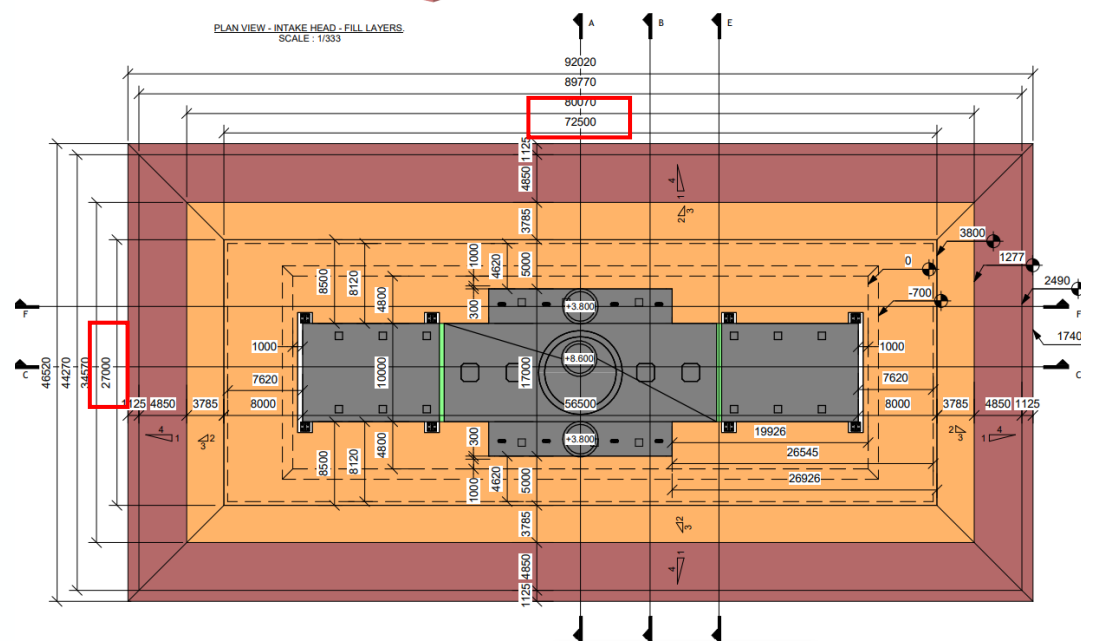
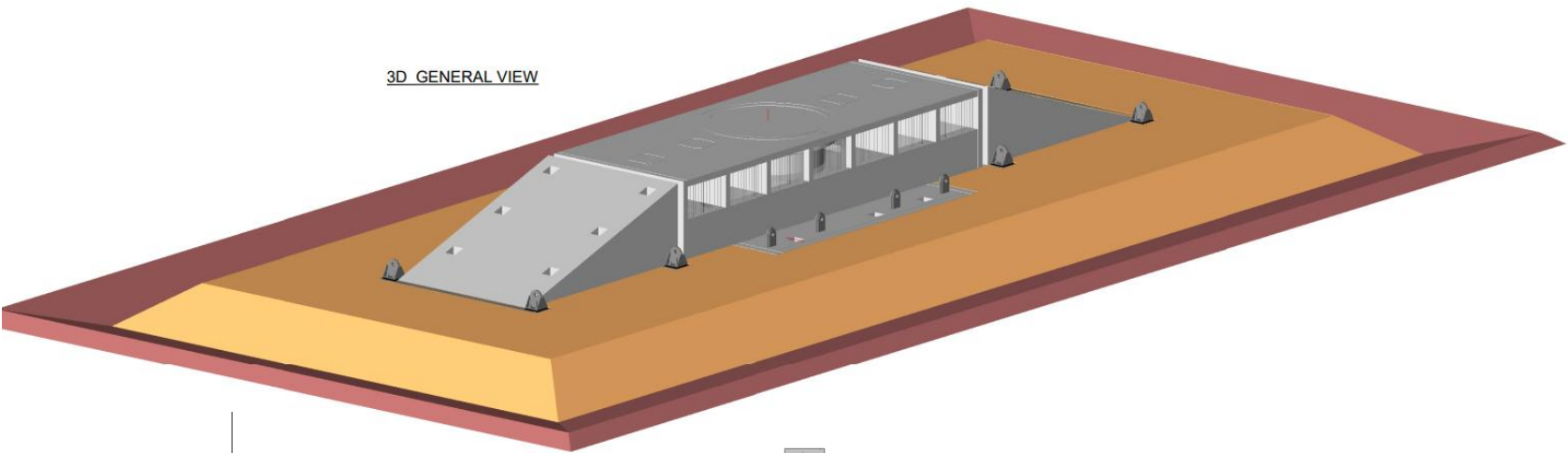
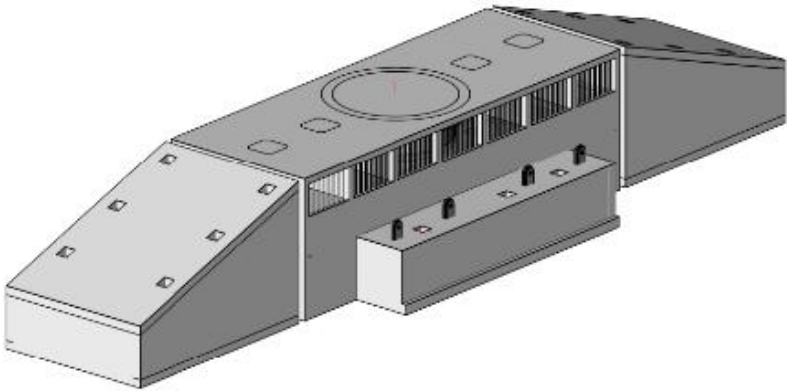
- Site Set Up contracts
- UXO Investigation
- GI
- Piling
- Office Welfare and accommodation – works tendered
- Civil Works Car Parking and EV Charging
- Electrical and Distribution
- Marine Procurement Strategy
- Batching Plants – works tendered
- Gantry Cranes
- Refurbishment of existing precast factory
- Carousel – works tendered

“Building the team for Success”

Marine Intake Heads

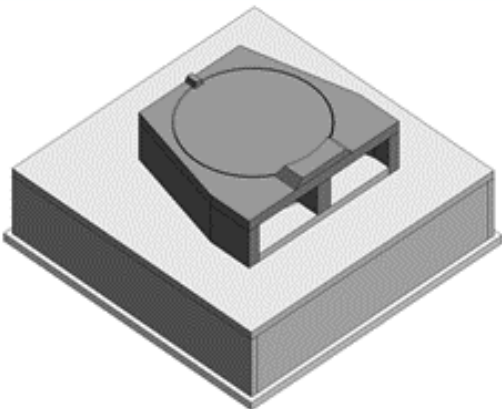


INTAKE (4 locations)

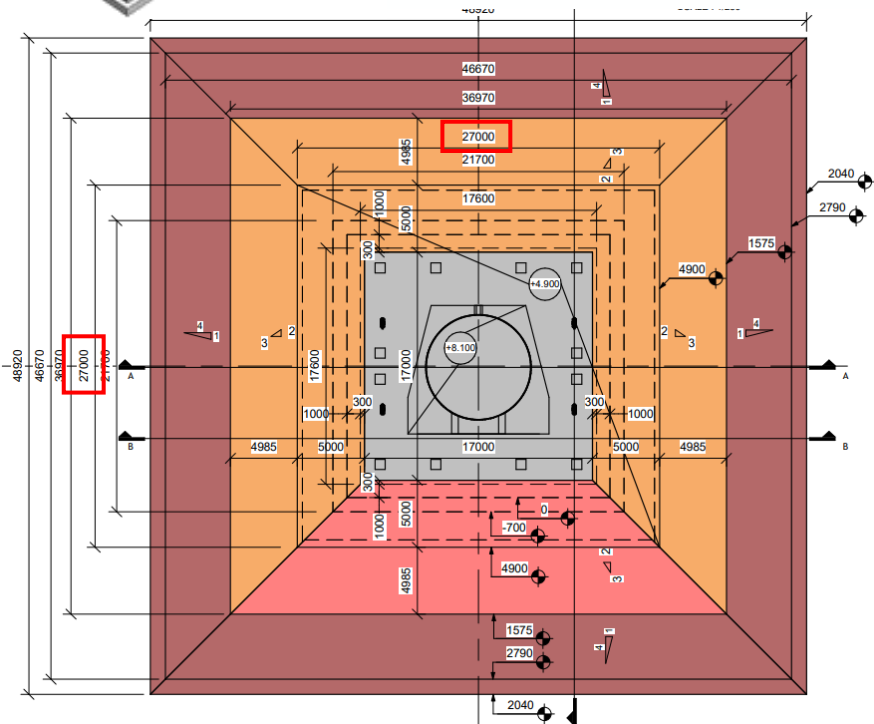
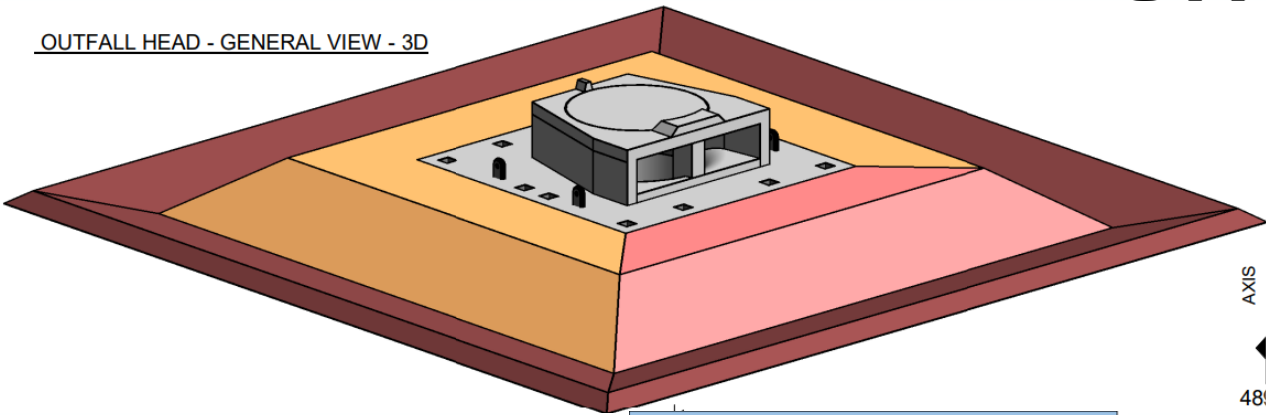


Marine Outfall

OUTFALL (2 locations)



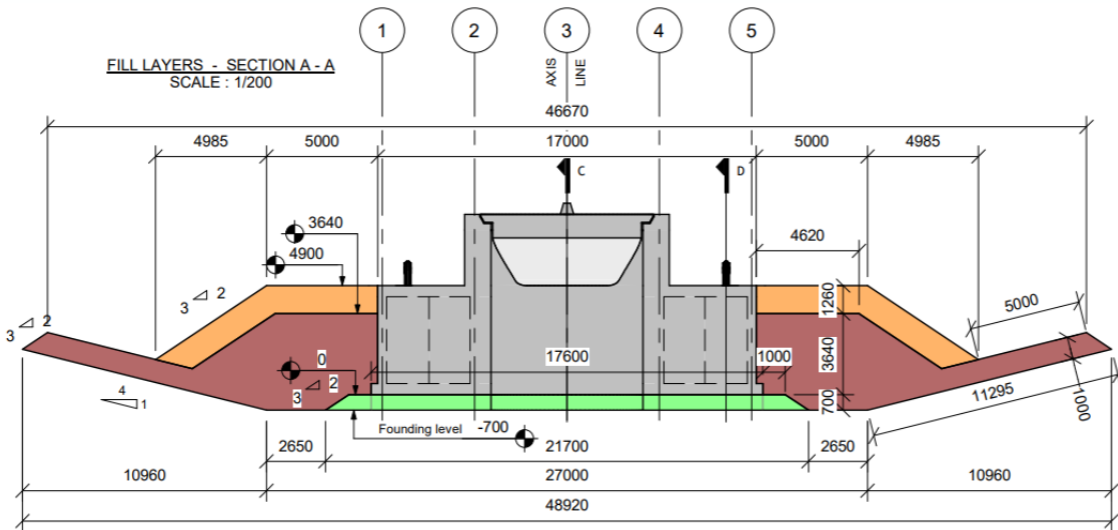
OUTFALL HEAD - GENERAL VIEW - 3D



FILL LAYERS		
	Thickness in m	Volume in m3
GRAVEL BED	0.7	273
GRANULAR BACKFILL	Variable	3878
ROCK ARMOR 0,3-1t	1.26	1009
ROCK ARMOR 1-3t	1.8	455

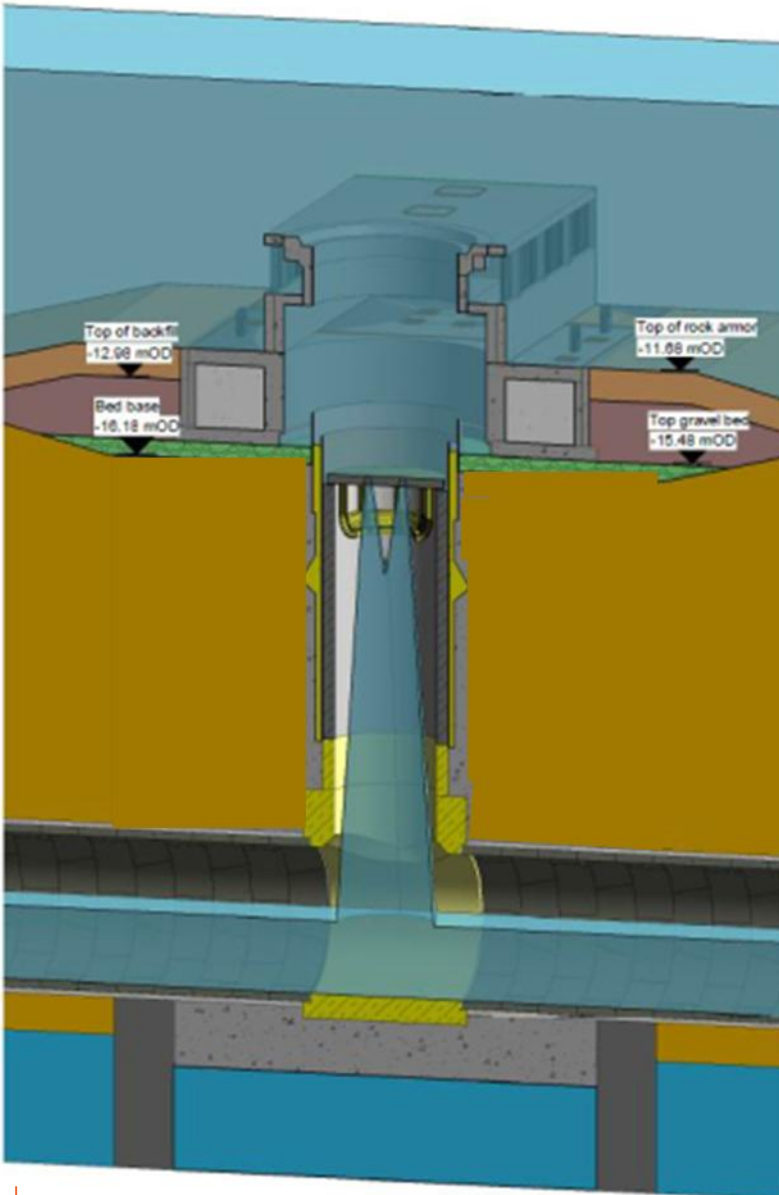
- CONCRETE
- GRAVEL BED
- GRANULAR BACKFILL
- ROCK ARMOR 0.3-1t
- ROCK ARMOR 1-3t

FILL LAYERS - SECTION A-A
SCALE : 1/200



Seabed
5.6m
Dredge

Marine Works

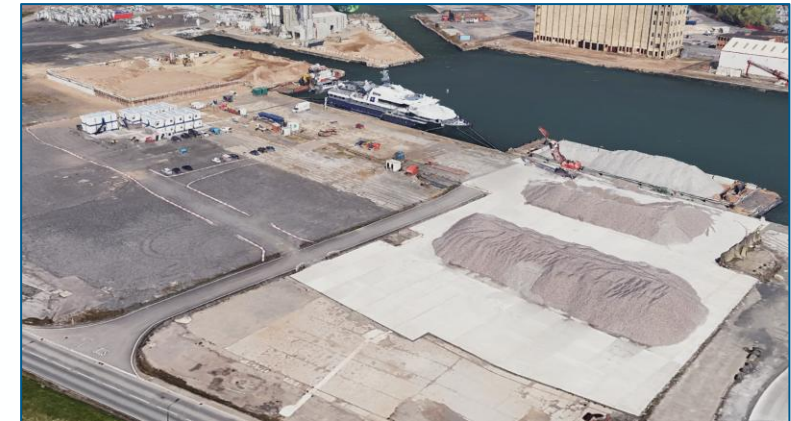
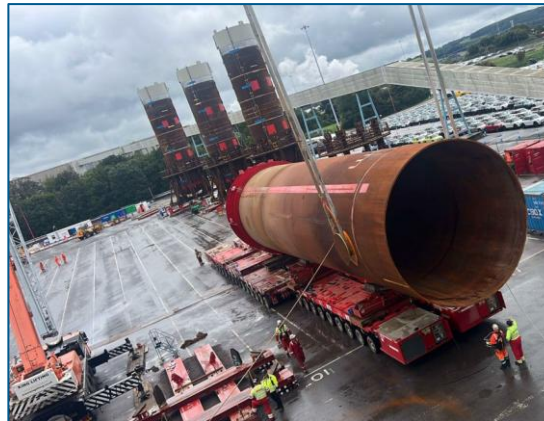


- Dredging volume - ~127,000-~198,000m³
- Concrete in secant piles – ~33,000m³
- Concrete in tremie fill - ~34,000m³
- Cementitious waste to dispose/recover from the seabed (Secondary pile cuttings + secant pile cut down + main shaft excavation) - ~22,000m³
- Annular grout - ~530m³
- 4no 4000t intake heads
- 8no 2000t ramps
- 2no 2000t outfall heads
- 6no 6.1m diameter, 35m long, 300t casings
- 6no 5.3m diameter, 13m long, 300t liners
- 4,500m³ gravel bedding
- 40,000m³ backfill
- 15,500m³ rock armour

Support Hub

In order to support the offshore operations, a significant hub on the East coast is required for the below activities

- Site offices, parking to support marine construction activities
- Crew transfer location
- Quayside logistics
- Large materials storage (casings + liners)
- Storage of rock materials
- Storage of concrete constituent materials
- Staging of precast Heads
- Import staging (& dewatering) of waste



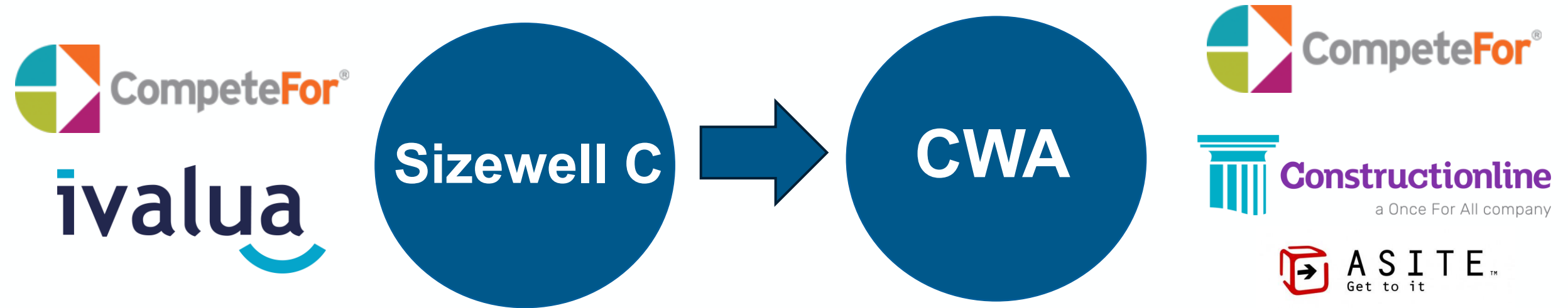
Systems and Processes

Daniela Caso - CWA Procurement Systems Lead

Transition of Procurement Processes and Systems

Sizewell C → CWA

System Landscape: From Expression of Interest to Tendering



Transition of Procurement Processes and Systems

Sizewell C → CWA

System Landscape: From Expression of Interest to Tendering

Stage	SZC System	CWA System	Function
Expression of Interest	CompeteFor	CompeteFor (unchanged)	Early engagement and opportunity visibility
Pre-qualification	Ivalua	Constructionline (Once For All)	Assessment of supply chain capability and compliance
Tendering	Ivalua	Asite	Distribution and structured submission of tender documentation
Evaluation & Award	Ivalua	Asite	Evaluation and contract finalisation

Transition of Procurement Processes and Systems

Sizewell C → CWA

As we move from Sizewell C systems to CWA, here's what you can expect:

- **Different systems** - you may need to register and interact differently
- **Some steps will be simplified**, while others may initially feel unfamiliar
- **Understanding the new process early** will help avoid delays or duplication when bidding
- **Ongoing processes will remain in the system where they started**
(e.g. if a tender is running in Ivalua, it will be completed there and will not be transferred to Asite)
- **A more efficient internal approval workflow** will reduce response times
- **Support will be provided by CWA** to help you understand and navigate the new process

Social Impact

Jessica Rivers - Social Impact Advisor

Introductions

Part of the Civils Works Alliance (CWA)

Social Impact (ESG) Team

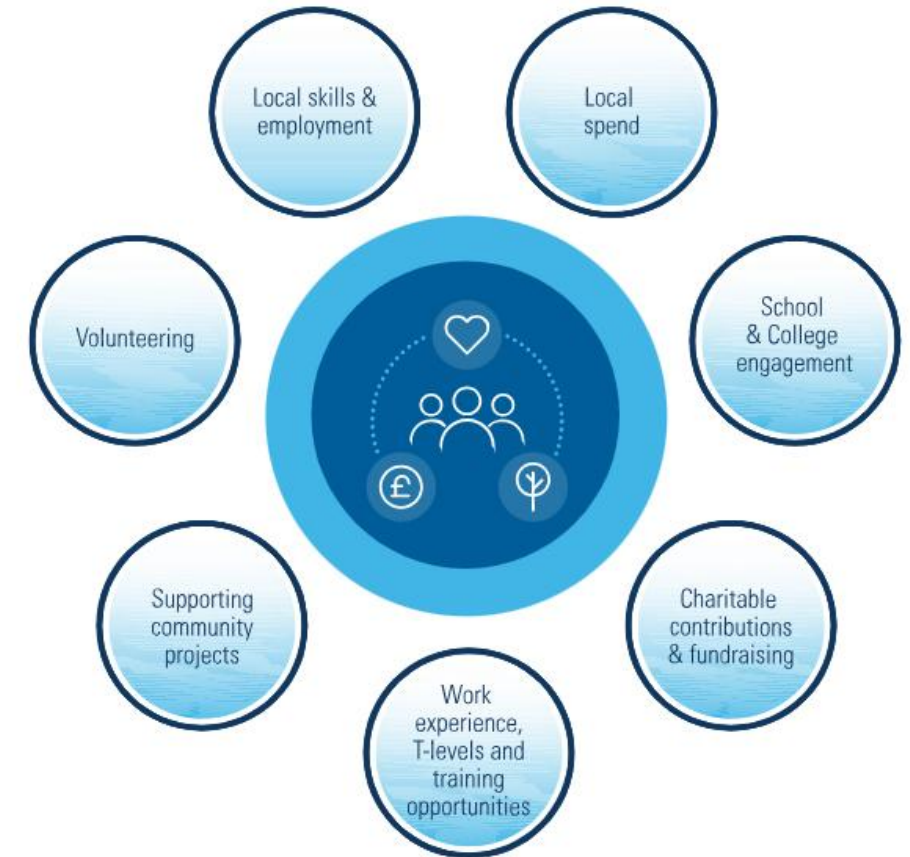
- What is Social Impact?
- Provide an understanding of why Social Impact is important for the project.
- Explain what commitments and targets the CWA will support the SZC team in.
- Give an overview of what events we have taken part in and supported.
- Examples of how the CWA can get involved.



Nicky Paine
Social Impact Lead

Jess Rivers
Social Impact Advisor

What is Social Impact?



What is Social Impact on Sizewell C?

- A local needs analysis was done in the areas surrounding Leiston using the Indices of Multiple Deprivation.
- This analysis identified key areas that would benefit from social impact intervention. These areas are:
 - Employment
 - Education, Skills & Training
 - Health Deprivation & Disability
 - Living Environment
 - Income Deprivation Affecting Children

The Seven Domains of Deprivation



What are Sizewell C's Social Impact Commitments?



How the CWA are delivering on Sizewell C's Social Impact Commitments

SZC ESG Supply Chain Goals- Everyone involved in the project has a part to play in helping us achieve our overarching commitments

Goal 1: Increase UK content

- Take positive action to buy from UK based businesses
- Promote the use of SMEs in the Nuclear Supply Chain

Goal 2: Invest in education, employment and skills

- Provide 1,500 apprenticeship opportunities
- Support social mobility initiatives

Goal 3: Reduce environmental impact of construction

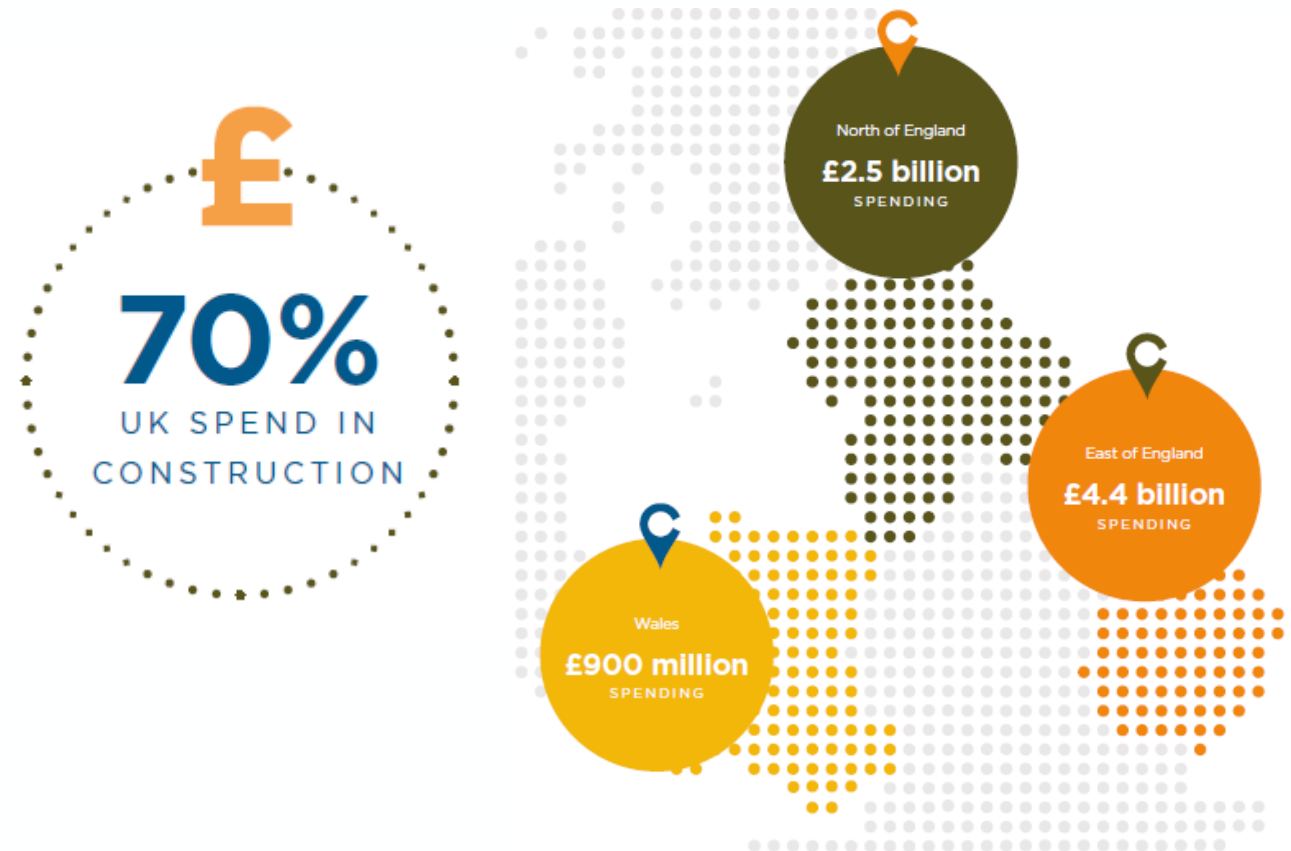
- Promoting environmental sustainability opportunities (carbon, water, circular economy, biodiversity, BREEAM)

Goal 4: Tackle workforce inequality

- Improve social mobility by creating job opportunities
- Reducing the gender pay gap to zero
- Promoting physical and mental health to improve staff wellbeing

Goal 5: Optimise opportunities for local communities

- Take steps to reduce the carbon intensity and local air pollution
- Contribute to initiatives that improve outcomes in the region
- Support the creation and maintenance of green spaces in the UK & Suffolk



What are the CWA's Social Impact Commitments?

Investing in education, employment and skills

Supporting apprenticeships in the UK through the CWA and our supply chain

Supporting SZC target of apprenticeships awarded to women.

> 500+ Apprenticeships



Tackling workforce inequality & promoting gender balance

- % workforce who are female through the CWA and supply chain
- Address Gender Pay Gap
- % Percentage of Suppliers supporting mental health initiatives for staff



What are the CWA's Social Impact Commitments?

Optimising opportunities for local communities (£)

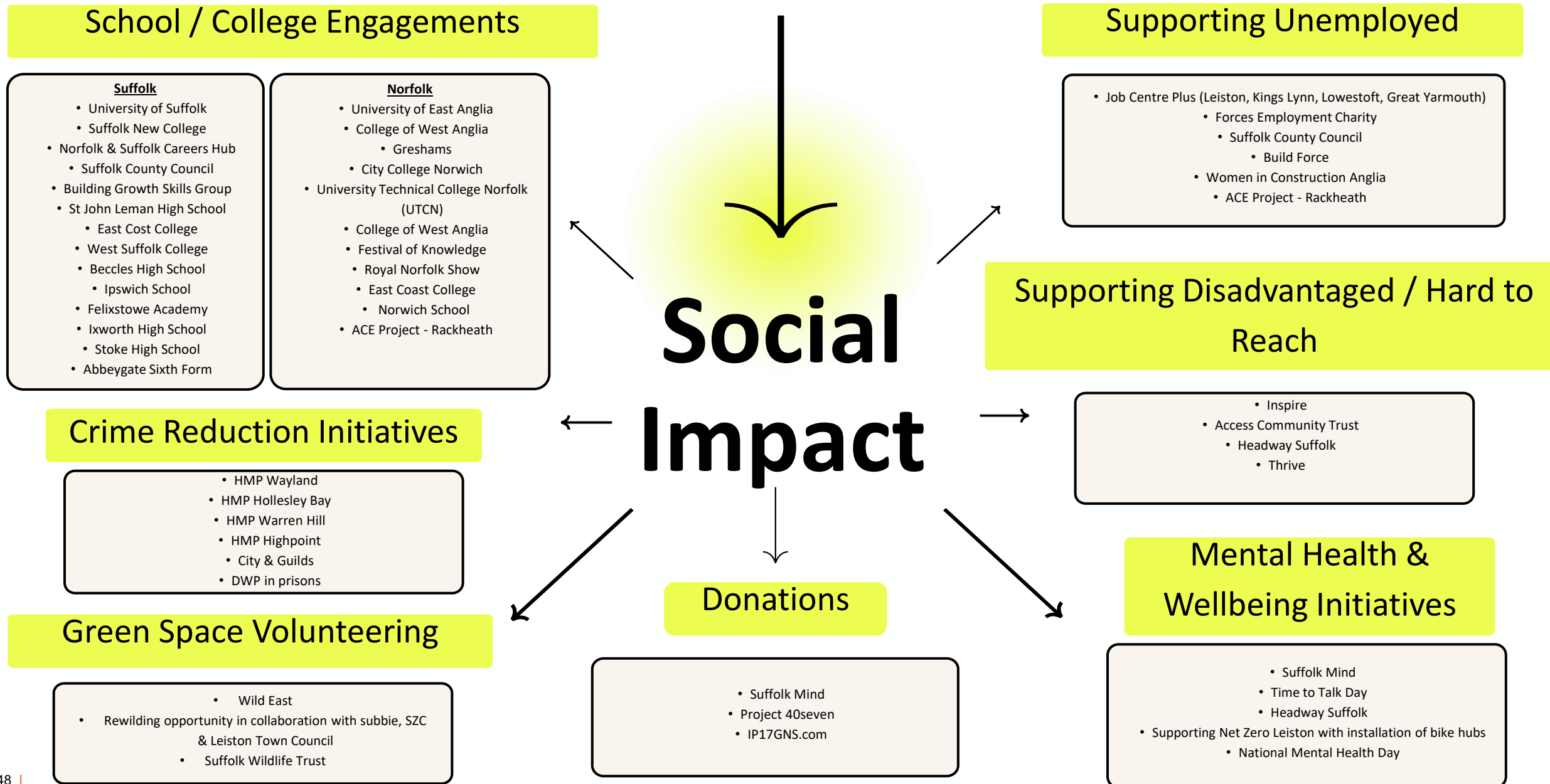
Donations or in-kind contributions supporting community initiatives in Suffolk, the East of England and the UK

Hours spent participating in Community Initiatives, in Suffolk, the East of England and the UK

- ✓ Reducing Crime
- ✓ Health & Wellbeing
- ✓ Support of disadvantaged and hard to reach people in the community
- ✓ Supporting the unemployed
- ✓ Careers Support in Schools & Colleges
- ✓ Create/ manage green infrastructure



What have we achieved so far ?



Careers Outreach

Total
Hours

388



Supporting Unemployed



Volunteering

Total
Hours

181



Collaboration with our subcontractors so far has included:



HMP Support:

Supporting HMPs Wayland, Highpoint, Norwich, Hollesley Bay & Warren Hill at careers engagement activities and employment outcomes

Educational Outreach Support:

Supporting students in schools & colleges to promote SZC and opportunities within it

Careers Outreach Support:

Supporting engagement with local Job Centres, Prisons and with charities that support groups facing barriers to employment

Support of local community groups/initiatives:

Working with the CWA to support local charities / organisations with volunteering / donations of time and equipment

We need the support of our Subcontractors to continue to deliver positive impact on the communities in our region.

What's next?

Olivia Cairney – Supply Chain Manager

Upcoming events

SZC
Essential
Standard
(Construction
Line)

Main Civils
Event

Geotechnical
Alliance

Education
Webinars
(Commercial
& Contracts)

Upcoming Opportunities- CompeteFor



September 2025

- BLF Sheet Piles
- Tower Cranes
- Temporary Plant & Equipment Hire
- Heavy Load Crane
- Casing and Liner Fabrication
- Gantry Cranes[ACA]

October 2025

- BLF Main Build
- Highways and Surfacing
- Capping Beams

November 2025

- Formwork to basement, Cores and Superstructure (HBX)
- Waterproofing - Bonded Membrane & Waterbar Material Supply
- Waterproofing - Unbonded Membrane Material Supply
- Staircases Formwork HMX Building

December 2025

- Rubber tired Gantry Cranes [Avonmouth] includes crane Assembly /dismantling
- HR Monitoring (CRX & Building)
- UXO Survey & UXO Clearance

2026

- Marine Coordination
- UXO Analysis
- Isolation Cap Fabrication

SUFFOLK CHAMBER SUPPLY CHAIN ENGAGEMENT



WORKING WITH SIZEWELL C

QUESTIONS

SUFFOLK CHAMBER SUPPLY CHAIN ENGAGEMENT



WORKING WITH SIZEWELL C

Get in touch...

email: sizewellcinfo@suffolkchamber.co.uk

or visit: www.sizewellcsupplychain.co.uk

THANK YOU