

Agratas Bridgwater gigafactory project

CECA South West members meeting

17 September 2025



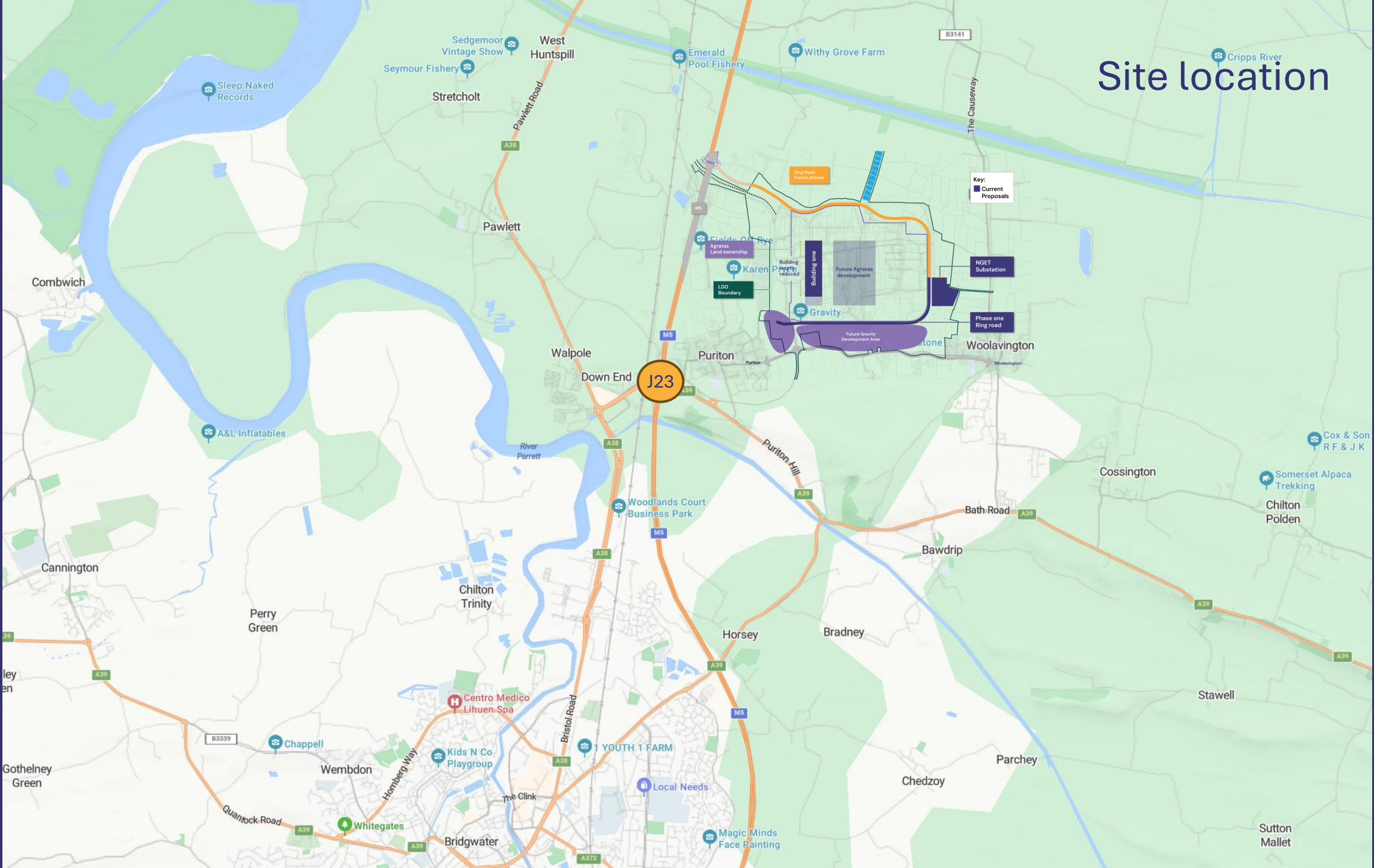
PROJECT BRIEFING

Nick Cooper, Community Engagement Manager - Agratas

Site location



Site location





Royal Ordnance Factory 37



Staff on site, 1941

Formal lab



22 41 bc

Puriton

Munä

Lfl. Kdo. 3 Oktober 1942

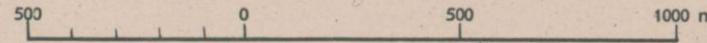
Nur für den Dienstgebrauch!

Bild Nr. 2577 Z 22

Länge (westl. Greenw.): $2^{\circ} 57'$ Nördl. Breite: $51^{\circ} 10' 30''$
Zielhöhe über NN: 10 m

Karte 1:100000
GB/E 32

Aufnahme vom 29. 6. 42



Maßstab: 1:18400



Luftwaffe target dossier, 1942

New ownership and Enterprise Zone status from 2017



Local Development Order in place from 2022



Maximum floorspace

Land Use	Use Class	Area (SQM)
Advanced Manufacturing		
Sub total		1000000
Supporting Employment Uses		
R&D	E(g) (B1b)	35000
Storage & Distribution		15000
Industrial Processes	B2 (B1c)	7500
Other supporting employment space incorporating a variety of flexible working activities	E(g) (B1a)	7500
Sub total		65000
Supporting Uses		
Nursery		1000
Hotel/Conference		8500
Sports/Leisure (indoor courts/facilities)		8000
Gym		7500
Retail/Café		750
Health Centre		750
37-Club		2500
Various other employment across site		6000
Sub total		35000
Total floorspace		1100000
Accommodation		750 Units

G

Gravity

Smart Campus

**Gravity
Local Development Order
Adopted Version**

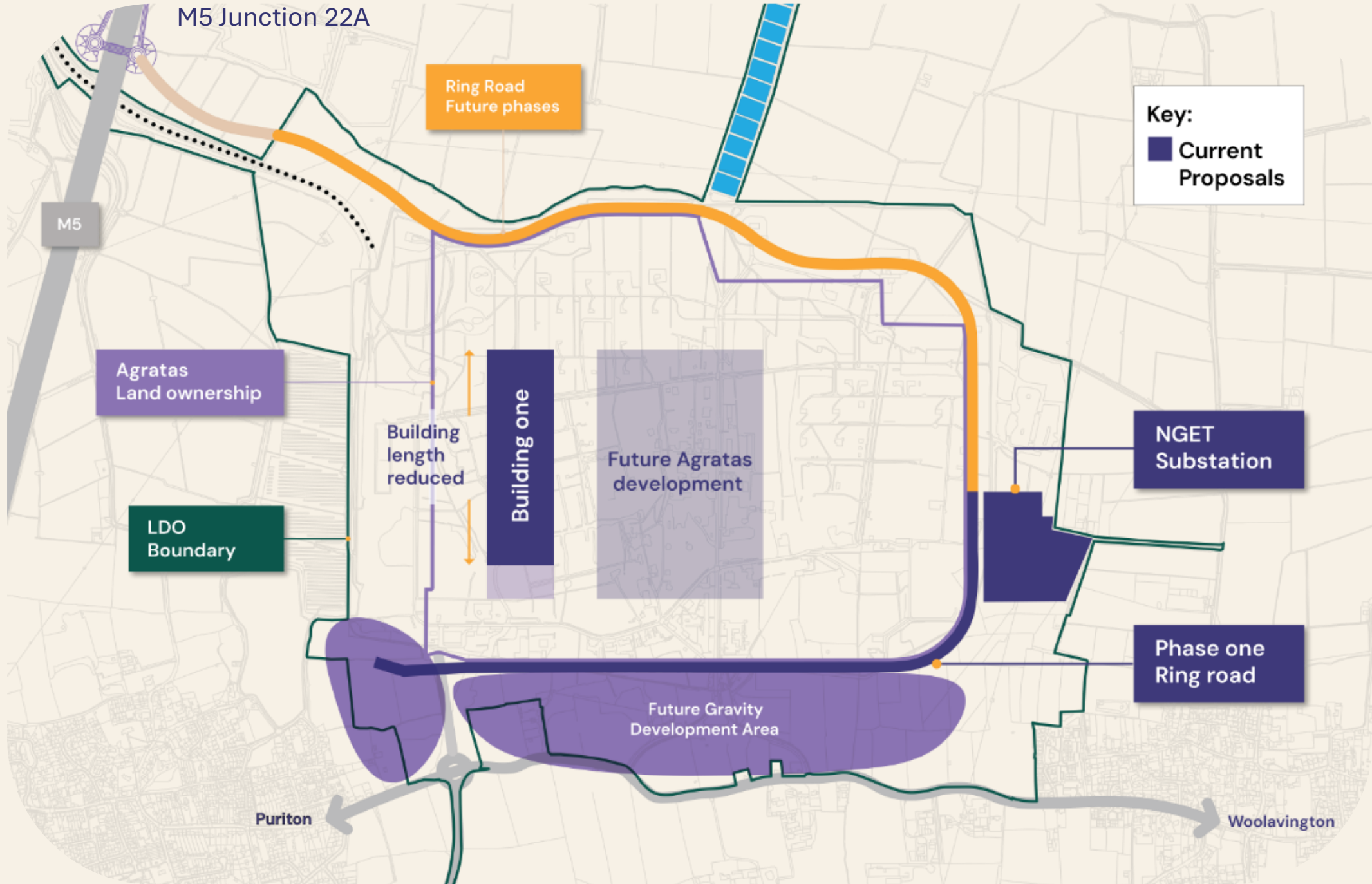
**Adopted by Sedgemoor District Council on
23rd February 2022**

Fast-track to the future, naturally | thisisgravity.co.uk | TA7 8AD

Agratas purchases 50% of the site in 2024



M5 Junction 22A





Looking south west towards Puriton

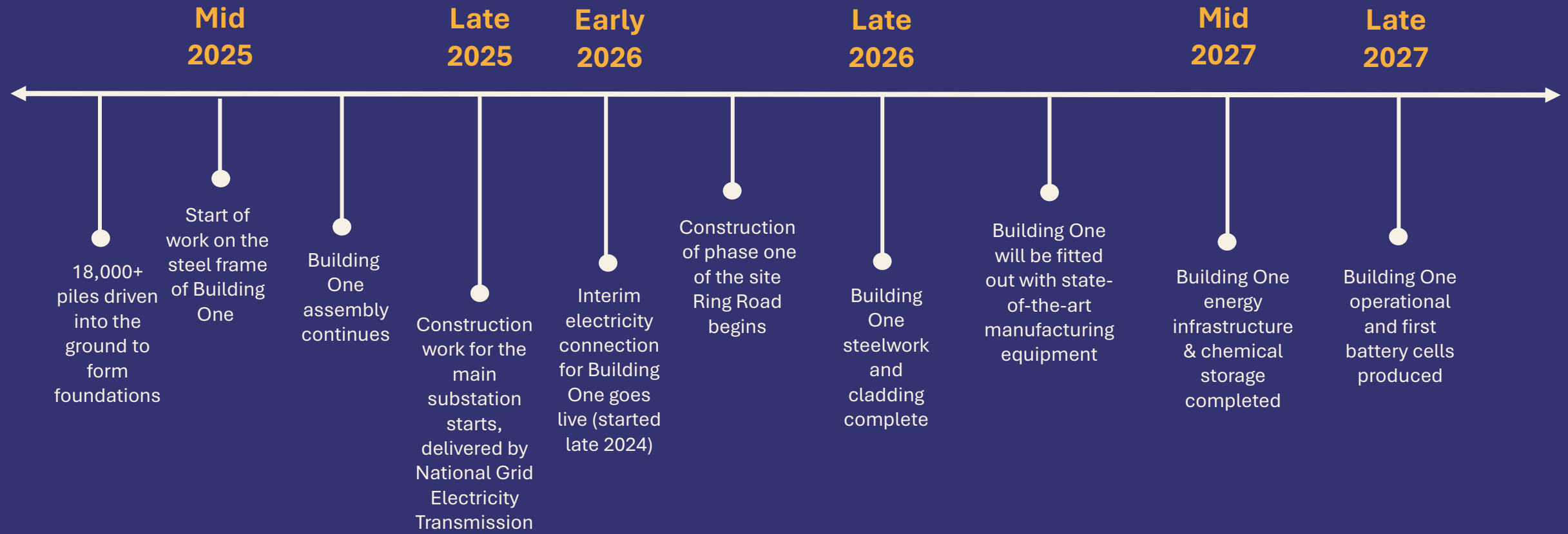


Looking south east towards Woolavington



Looking north towards the Mendip Hills

Site development timeline



Our impact in Somerset and the South West



- **£700m** in economic value generated annually for the South West once our full facility is operational
- An additional **£540m** in GVA generated in the South West during peak construction years for the full facility
- **2,200+** direct jobs supported during peak construction of Building One and around **7,500** jobs supported in the supply chain
- Across the UK, we will create 20,000 jobs, the equivalent of **8% of total employment in Somerset**, including 4,000 jobs on site and more in Somerset once the full facility is operational
- **£9m** directly added to Bridgwater's economy and almost **£17m** to the wider regional economy in 2028-29, from spending by Agratas workforce



Kickstarting new battery careers and training



- Around **1,600 jobs** will be required for Building One:
 - Almost 1,000 operational roles
 - Roles across maintenance, quality, technical teams, engineering, logistics, back-office functions
- Community-first hiring with multiple pathways:
 - Creating new **tailored courses** with **University Centre Somerset College Group**
 - We will deliver bespoke **battery skills bootcamps**, **rotational programmes** within Agratas, and specialist **follow-on modules** will immerse and fully prepare learners
 - Also **short courses** for prospective applicants
 - **Almost 300 apprenticeships** in maintenance and manufacturing from 2027 to 2031

2025 and 2026

2026

2027



Our national impact



- Around **£43bn** expected to be added to the UK economy over the next 25 years from the construction and operation of the full facility
- Around **20,000 jobs** supported in the UK annually once the facility is fully operational from 2033
- Jobs will be well-paid opportunities which will boost careers across the UK
- Around **£15bn** in added economic value generated by the construction and operation of Building One alone over next 25 years
- The construction and operation of Building One will support **17,000+ jobs** and generate **£3.3bn** in value by 2030



Working with our local supply chain



- Working with businesses from across the South West alongside our primary delivery partner, **Sir Robert McAlpine**, leading the construction of Building One
- The construction of Building One will support more than **11,000 jobs** directly, indirectly through supplier spending, and through induced impacts from spending by employees
- In the peak year of activity, construction alone will support more than **3,000** of these jobs in the South West, equivalent to around **20%** of jobs in Somerset's construction sector
- Around **£176m** added to the South West economy in a single year of peak construction activity for Building One

Upcoming procurement opportunities in 2026:

- Drainage and concrete work
- Mechanical and electrical services
- Plumbing
- Labour, to supplement the team already on-site
- Material supply



CONSTRUCTION UPDATE

Mark Davies, Project Manager - Sir Robert McAlpine

**Today's
Representative from
Sir Robert McAlpine
for the
Agratas Project**



**Mark Davies
Project Manager
Structure and Envelope**

Leading large-scale structural delivery
Expertise in managing complex
construction interfaces

Who is Sir Robert McAlpine

Large scale & special projects

- We have just been appointed as Construction Manager for the landmark Therme Manchester project, the UK's first urban wellbeing resort
- Project Invictus - New Electric Arc Furnace, scheduled for commissioning by the end of 2027, projected to cut Port Talbot's carbon emissions by around 90% ensuring the production of high-quality, sustainable steel and safeguarding 5,000 UK jobs
- Eden Project which opened in 2001 to global acclaim - for its engineering, design and environmental credentials
- Refurbishing No 1 Court Wimbledon Delivery of the retractable roof over Wimbledon's No.1 Court was a triumph of engineering excellence, collaborative working, client engagement and exemplary project management.



Proudly building Britain's future heritage

Sir Robert
McALPINE



Over **150 years** of engineering legacy

🏛️ Iconic projects like The O2, Eden Project, and the Olympic Stadium

🌍 Leaders in **sustainable construction**

👷 Workforce of 3,000+ and family-owned ethos

Proudly building Britain's future heritage

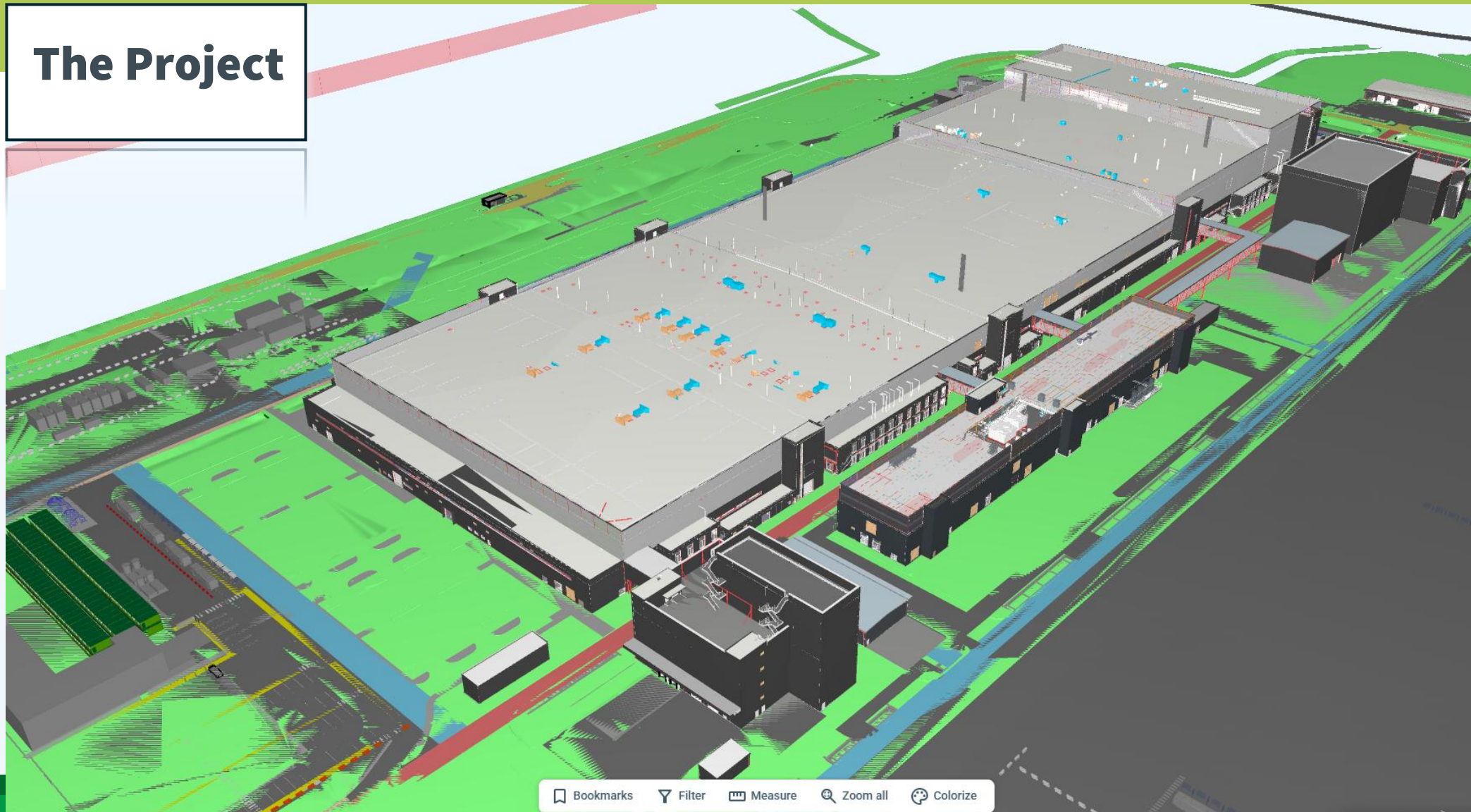
Sir Robert
M^cALPINE

Introduction to our Somerset project: Agratas

- A flagship manufacturing hub, pivotal to the UK's clean transport transition
- Creating over 2,000 construction jobs, with long-term employment of up to 4,000 jobs through operational phases
- Zero construction waste to landfill – achieving a 100% diversion rate through sustainable practices
- Building materials are ethically and responsibly sourced to meet high environmental standards
- Promoting green travel options, including walking and cycling facilities and dedicated bus services to and from the site
- Engaging with local communities and education providers to maximise regional benefits and build lasting partnerships



The Project



Proudly building Britain's future heritage

Sir Robert
M^cALPINE

Agratas Project – Some STATS

Building 1:

- **70,000 m²** – equivalent to **10 Premiership football pitches**
- **Almost 500 meters long** – nearly **5 football fields** end-to-end

Groundworks:

- **1.2 million tonnes** of repurposed soil & stone
- Enough to fill **30,000 double-decker buses**

Piling Works:

- **16,000 piles**
- Total length over **100 miles** – from Bristol to London!

Civil Works

- 1.5 km** sheet pile engineered rhyne, 3 m wide and 2.2 m deep
- Attenuation Basin** 90 m x 60 m
- 1.5km** Construction Road network
- 2.5 km** earthwork rhyne network

The engineered and earthwork rhynes are designed to handle a two-minute storm event, with each siphonic pipe pair discharging up to 25,000 litres. Across all pipes, that's a total of 450,000 litres—enough to fill an Olympic-sized swimming pool in just five minutes.

Steel Installation:

- 14,000 tonnes** for Building 1
- 1,600+** tonnes for Cub 1 and ancillary buildings
- 6,000 Tonnes** installed to date

Workforce: **300+** currently on site

- 2,000+** construction jobs created by 2026–28
- 1,500** operational jobs from Agratas building 1
- 4,000** operational jobs on the Agratas site long term



Construction Timelines



Building 1 Superstructure
Start June 2025 – Battery
Production Q4 2027 (First
Line)



Energy Centre
Superstructure Start Oct
2025 – Commissioning Q1
2027



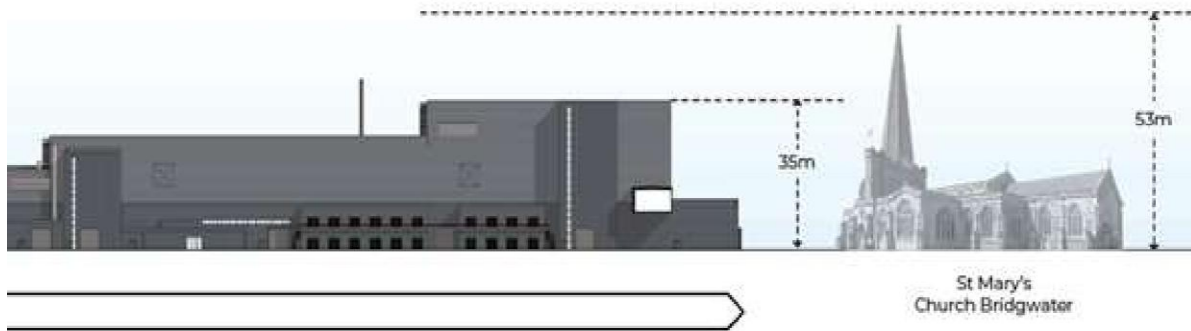
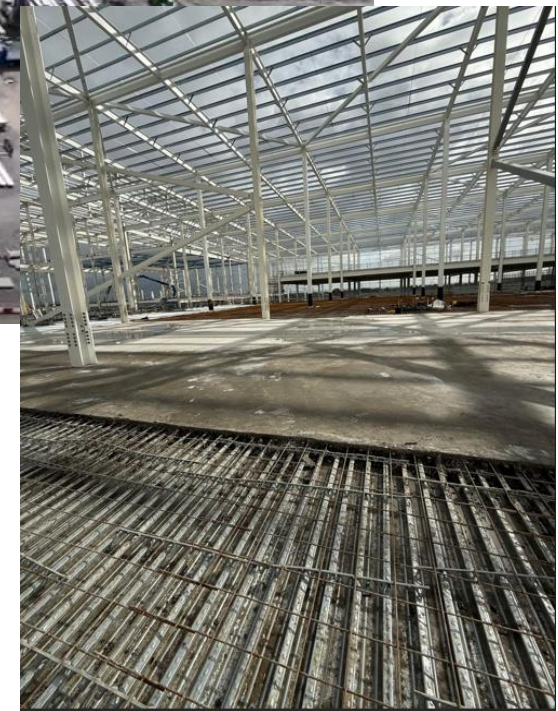
Ancillary Buildings
Superstructure Jan 2026 –
Completion Q1 2028



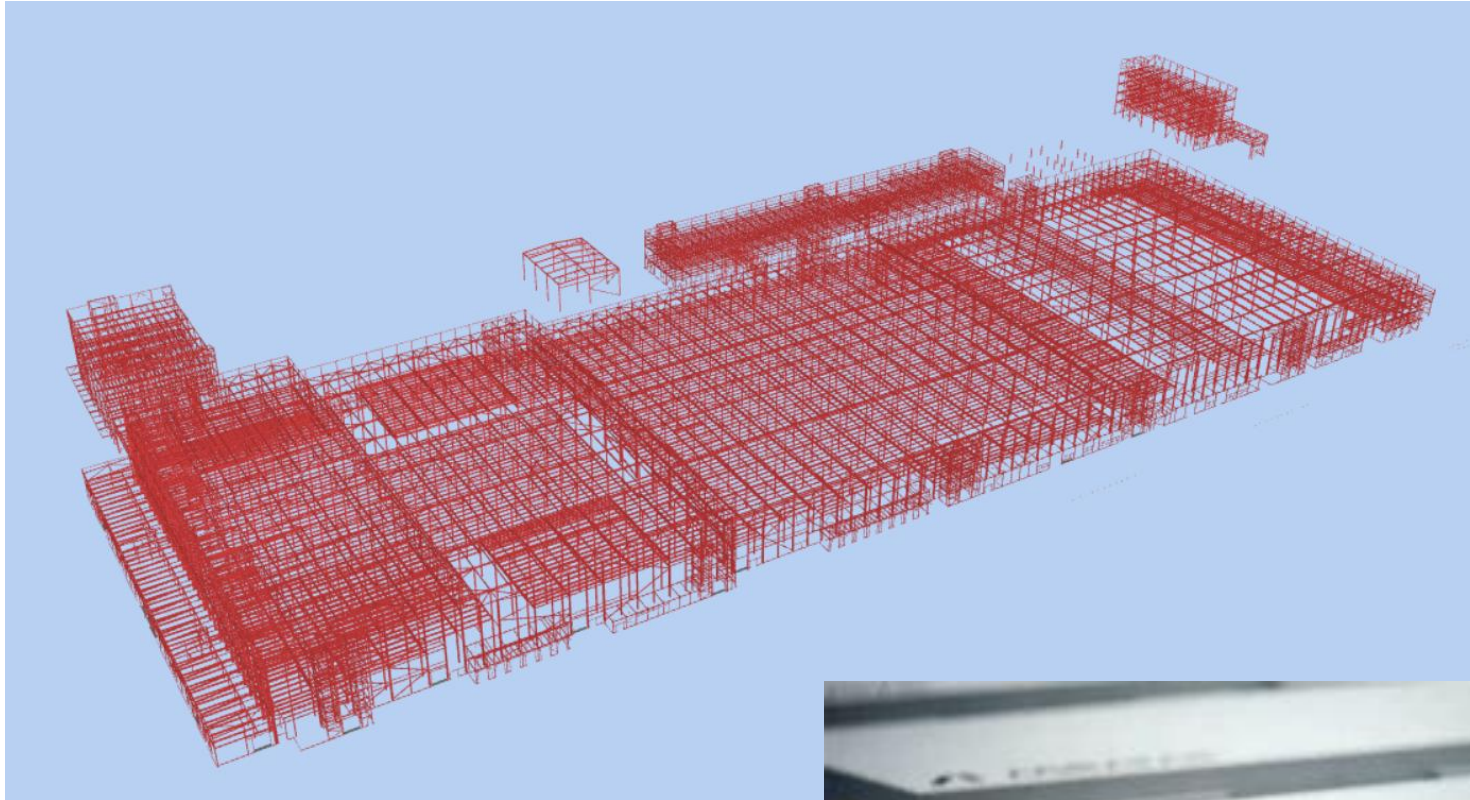
Hard & Soft External Works
& Landscaping Completion
Q3 2028



Works to date – Site Clearance, Substructure / Piling , Structural Frame, Mezzanine Slabs



Next Stages of the Build – Superstructure and Envelope



Roof Cladding :

Built-up metal seamed roof split into 3 zones E, A & B

Each Zone approximately 27,000m² – 9 weeks to liner each zone

At a rate of 800m² per day

Top sheet seamed rolled and fed at roof level 155m length sheets

Current design has 4m high parapets at the highest point

Wall Cladding

Overall, 40,000m² over 27 weeks

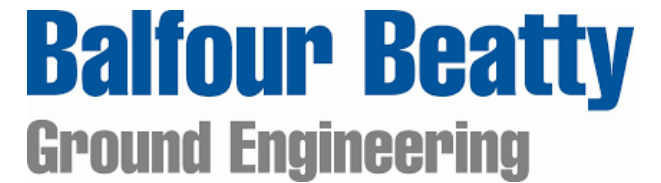
Focus on liner sheet at 350m² per day

5 weeks stagger between liner and top sheet

Bump outs are dependant on the cladding of the main



Due to scale, speed and surety needed we have key partners selected:



Building Sustainably at SRM

Sustainability is essential for delivery of a successful project

4 Key categories

Company Objectives



CARBON

Net Zero Carbon
by 2045



RESOURCE
EFFICIENCY

Annual Reduction
in Waste Generated



ETHICAL
PROCUREMENT

Increasing Material &
Supply Chain Transparency



SOCIAL
VALUE

Annual Increase in
Measured Social Value



Proudly building Britain's future heritage

**Sir Robert
McALPINE**



JULY 2025



QUESTIONS?





THANK YOU