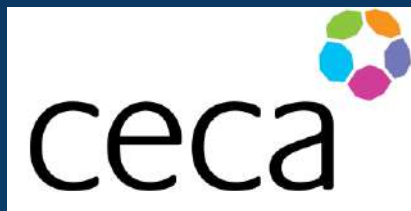




# THE BRISTOL PORT COMPANY

Presentation by  
John Chaplin BSc CEng FICE

## Making the Celtic Array Happen – The Role of South West Ports



# Overview



THE BRISTOL PORT COMPANY

- Top 10 UK commercial port
- Critical national infrastructure
- Directly employs 740 people, supports 22,000 in UK
- Contributes £1.3 billion<sup>1</sup> annually to the UK economy
- A family business following privatisation in 1991
- Annual revenue £125M
- £700M of **private** investment
- Diversified trade portfolio
- Strategically located: deep water facility; excellent road, rail and pipeline connections
- c.1,000ha freehold landholding

<sup>1</sup> figure from Oxford Economics study 2024



# Key Trades and Cargoes



THE BRISTOL PORT COMPANY



**Automotive**



**Break Bulk**



**Containers**



**Warehousing**



**Dry Bulks**



**Liquid Bulks**



**Project Cargo**



**Cruise**

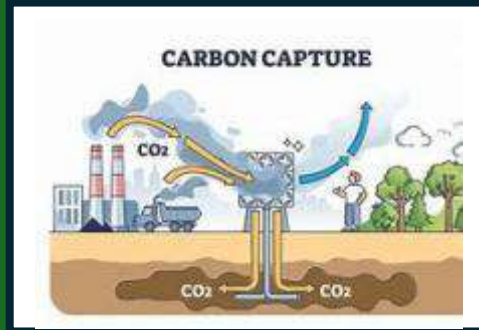
# Future Key Trades, Cargoes, Roles



THE BRISTOL PORT COMPANY



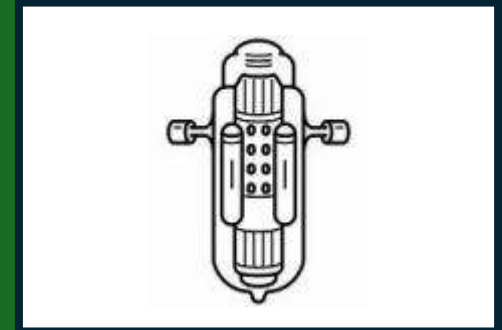
**FLOW**



**Carbon Capture  
Utilisation Storage**



**Hydrogen (+)**



**SMR (Oldbury)**



**Gravity Site: Agratas EV  
factory**



**LIDP**



**SAF**



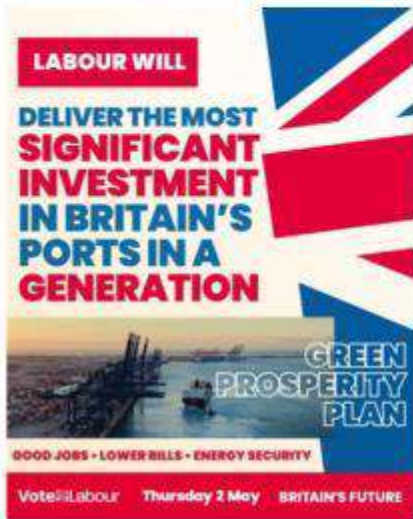
**Nuclear (large)**

# Central & Regional Government support



THE BRISTOL PORT COMPANY

## Supporting Port Investment & Growth



Ports will be at the centre of Labour's plans to make Britain a clean energy superpower

Rachel Reeves

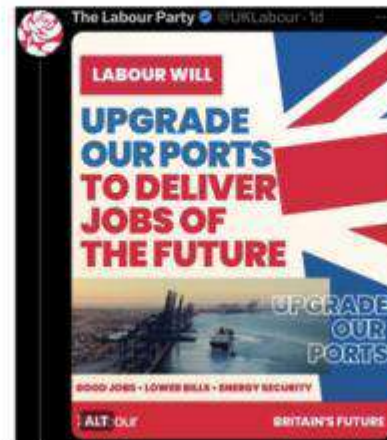


Rachel Reeves @RachelReevesMP · 6h  
Replying to @RachelReevesMP

We will invest that money into industries that can deliver energy security and bring down bills.

We'll build 8 new battery factories, 6 clean steel plants, and 9 renewable-ready ports.

And we'll create well-paid jobs across our country to make working people better off.



South West

- Jobs:** Creating jobs upgrading homes for construction workers, plumbers, installers
- National Wealth Fund:** Invest in the Celtic Sea renewable cluster as part of our £1.8bn commitment to upgrade ports
- Fund electric vehicle battery plants in automotive heartlands through Labour's £1.5bn Battery Power fund\*
- GB Energy:** Boost our nuclear industry by backing and building Hinkley C
- Warm homes:** Upgrade cold, draughty homes
- Local Power Plan:** Build over a thousand local power projects

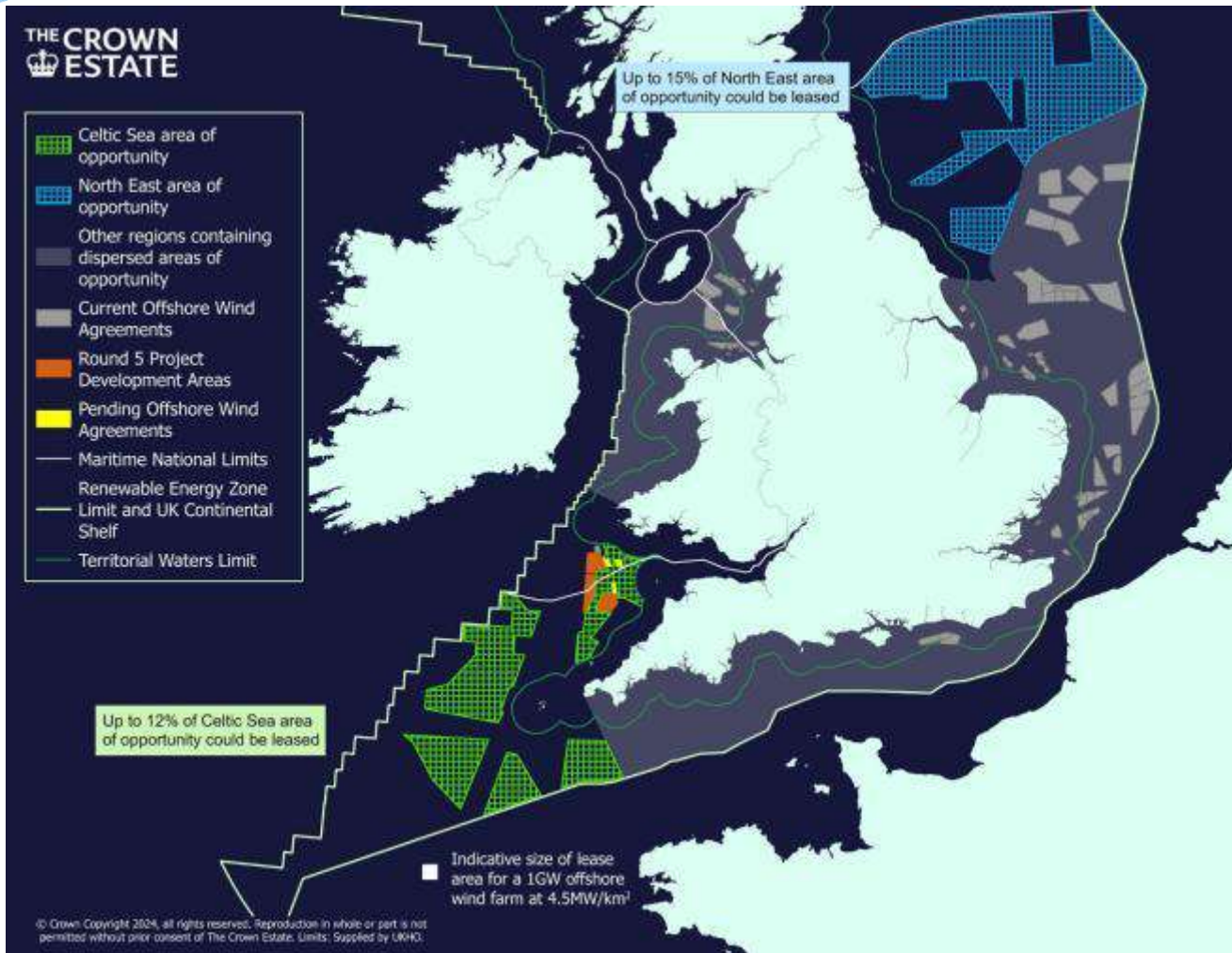
### 5 Making the West of England the home for green jobs and green growth

1. Support Bristol Port to attract investment in the development of Floating Offshore Wind.
2. Unlock the opportunities of the energy

# Floating Offshore Wind (FLOW) Overview



THE BRISTOL PORT COMPANY



## Celtic Sea Opportunity

4.5GW  
+ further  
12+GW  
(HPC – 3.6GW)

The Crown Estate  
Leasing  
Round 5  
Auction

## Preferred developers:

- Equinor
- Gwynt Glas

Bristol Port responding to  
Government policy and  
national need



# Bristol Wind Terminal (BWT) - location



THE BRISTOL PORT COMPANY



BWT site

# Bristol Wind Terminal – *the site today*



THE BRISTOL PORT COMPANY



**-Deep Sea Container Terminal footprint-**

# Ability, experience & supply chain



THE BRISTOL PORT COMPANY



Segment Factory and Heads  
40,000 tunnel segments  
6 x Heads - up to 4,800 tonnes each



## BRISTOL WIND TERMINAL (BWT) – Design, Cost & Programme

1. Layout options
2. Phasing options (capex)
3. Quay wall construction options  
Yard construction options
4. *Modus operandi* for terminal
5. Launch options
6. Costs, programme, buildability assessment
7. Inform the ES

## BWT – Environmental Impact Assessment (EIA) and Consenting (HRO - MMO)

1. Assess, mitigate and compensate all impacts
2. Produce Environmental Statement
3. Submit Harbour Revision Order (HRO) Application

## Steart Habitat Creation Scheme – Design, EIA and Consenting (Somerset Council & MMO)

1. Assess, mitigate and compensate all impacts
2. Produce Environmental Statement
3. Submit Planning Application and Marine Licence
4. Design, costs, programme, buildability assessment



# Bristol Wind Terminal (BWT)



THE BRISTOL PORT COMPANY



## Key features:

- New quay wall
- Land reclamation
- Launch options including slipway
- Breakwater (if required)
- Dredged berth pocket
- Deepened approach channel

# BWT - *Modus operandi*



THE BRISTOL PORT COMPANY



# BWT - timeline



THE BRISTOL PORT COMPANY

We are here

**Inception Meeting**  
October 2024

**EIA Screening & Scoping Process**  
February 2025

**Environmental Impact Assessment**  
during 2025/26

**Submit Environmental Statement & HRO and Marine License Application**  
Q2 - 2026

**BWT Final Delivery**  
Operational in 2031/32.....

**Construction**  
2027 – 2030.....

**Technical Design**  
2026 - 2027

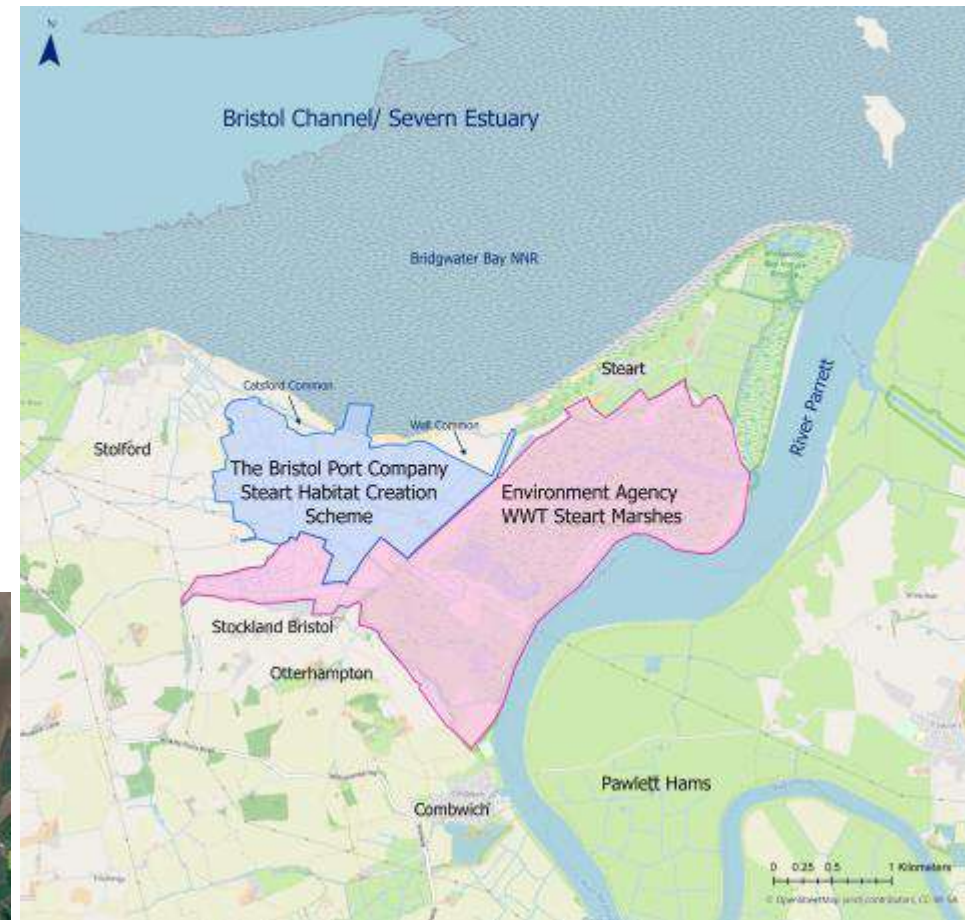
**MMO determination period**  
1 to 3 yrs (!!!)

# Habitat Creation Scheme



THE BRISTOL PORT COMPANY

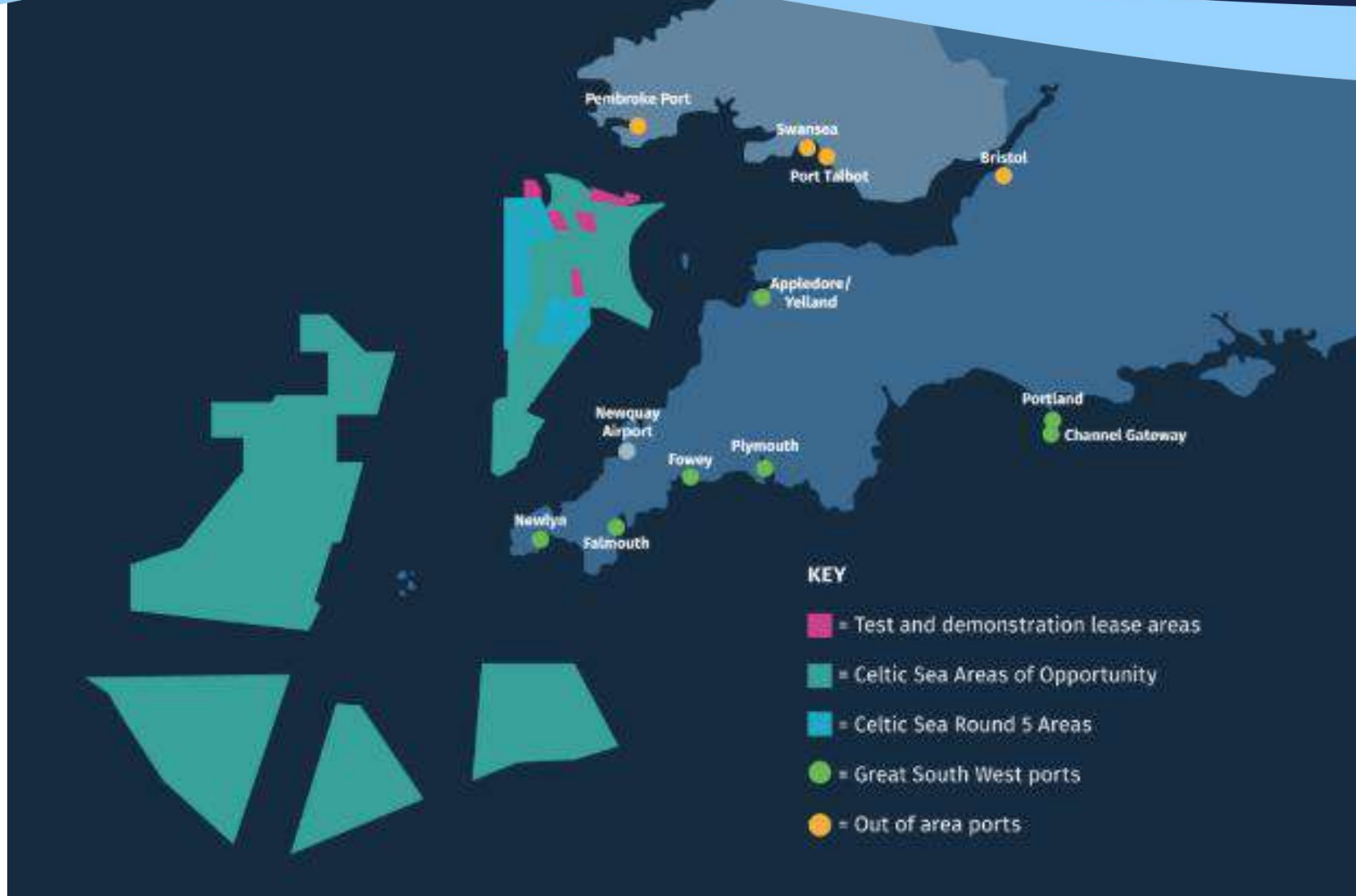
- Compensation for port development in Avonmouth
- Best site in Severn Estuary for the Port to deliver large scale intertidal habitat
- BPC invested in over 10-year process to find site, design, assess & gain approval
- 187 ha of land owned by BPC (461 acres)
- Creates over 130 ha of intertidal wetlands
- 15+ years of stakeholder engagement
- Planning permissions granted 2013 (lapsed)
- Site managed as a future nature reserve
- Adjacent, successful WWT/EA Steart Marshes Site



# a South West opportunity



THE BRISTOL PORT COMPANY





**Anchors**

**Fixings/Moorings**

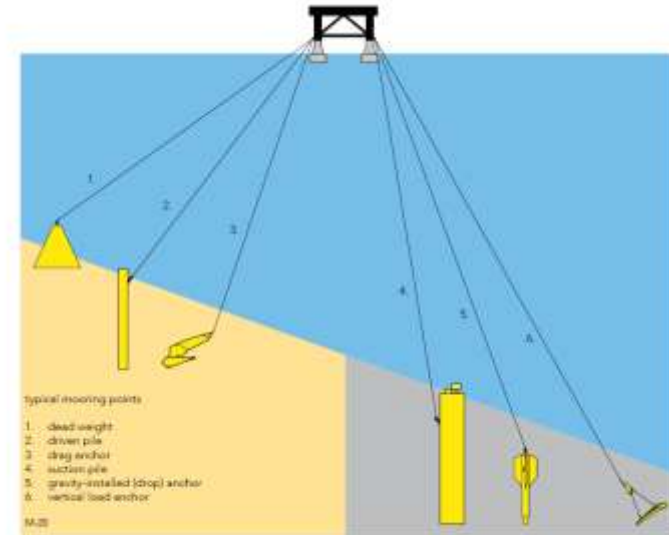
**Cables**

**Shoreside infrastructure – substations, etc**

**Security**

**Monitoring (impacts and performance)**

**Routine & major maintenance/refit**



# The Opportunity

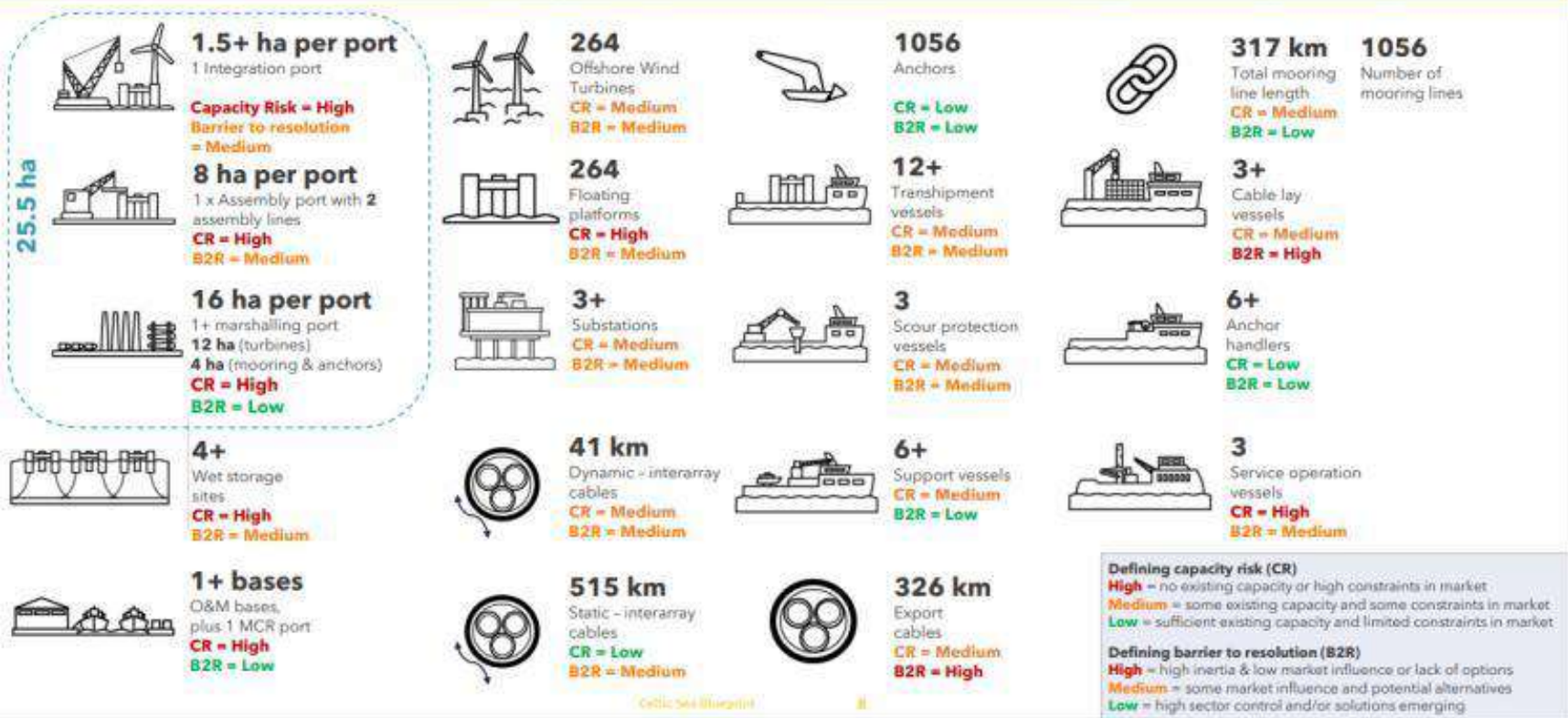


THE BRISTOL PORT COMPANY

## Celtic Sea Blueprint requirements

Minimum infrastructure required to deliver 4.5 GW (three x 1.5GW projects) of floating offshore wind capacity in the Celtic Sea

Capital expenditure on the Celtic Sea 4.5GW programme will deliver £1.4 bn GVA to the UK, and 5,300 jobs on average over five years



Sets out the minimum, total quantified capacity requirement for 4.5GW floating wind projects (assuming sequential build)

Value predicted for the UK:

- 5,300 jobs
- £1.4bn economic boost

Follows and aligns with:

- Offshore Wind Supply Chain Capability Assessment
- Industrial Growth Plan

**Defining capacity risk (CR)**  
**High** = no existing capacity or high constraints in market  
**Medium** = some existing capacity and some constraints in market  
**Low** = sufficient existing capacity and limited constraints in market

**Defining barrier to resolution (B2R)**  
**High** = high inertia & low market influence or lack of options  
**Medium** = some market influence and potential alternatives  
**Low** = high sector control and/or solutions emerging

# Challenges



THE BRISTOL PORT COMPANY

**Policy**

**Time**

**Funding**

**Consenting**

**Power**

**People & Skills**

# Threats!



THE BRISTOL PORT COMPANY



Port of Le Havre



Port of Brest



**#portsarehow**

**Maritime Sector is a cornerstone of the UK Economy**

**Ports are a key part of the UK'S resilient, sustainable supply chains**

**FLOW in the Celtic Sea is a massive opportunity – economic growth, greener planet, jobs, prosperity for local communities**

Thank you

[www.bristolport.co.uk](http://www.bristolport.co.uk)



THE BRISTOL PORT COMPANY

