



CECA SW Members Meeting

Chris Regan, Regional Director SW

1 April 2026

Introduction

- National Highways – scale and responsibilities
- Our Region
- The Challenges and Opportunities
- Working with Us
- Celebrating Success



People rely on our roads

To connect people and to drive the economy

88

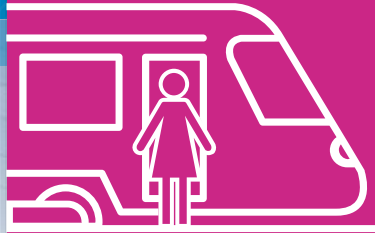
billion miles travelled on the SRN every year



Carrying

3x

more people than the UK rail network



9 out of 10

passenger miles travelled by road



and 79%

of all freight is moved by road



In 2023* we reduced the number of people killed and seriously injured on our roads by

↓ 39%



*compared to an agreed 2005-2009 baseline

Our road network



Over
24,000
bridges and other structures



over
150,000
signs



30,000ha
soft estate area

over
100,000
street lights



over **3,500**
electronic messaging signs

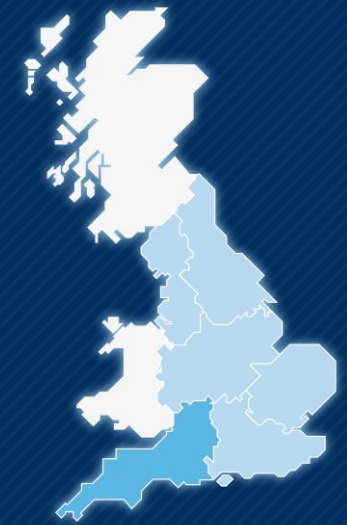
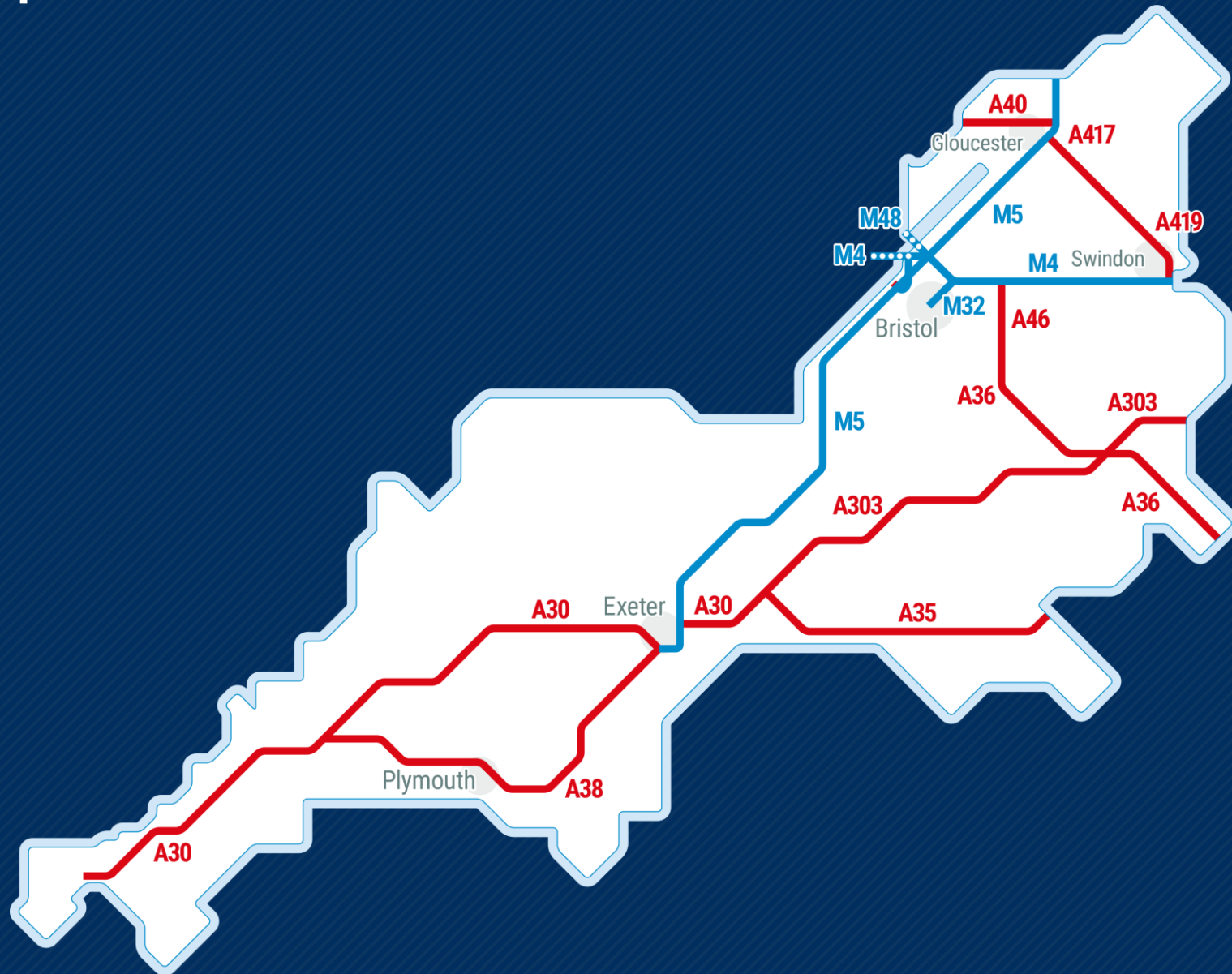


4,300
miles of motorways and major A-roads

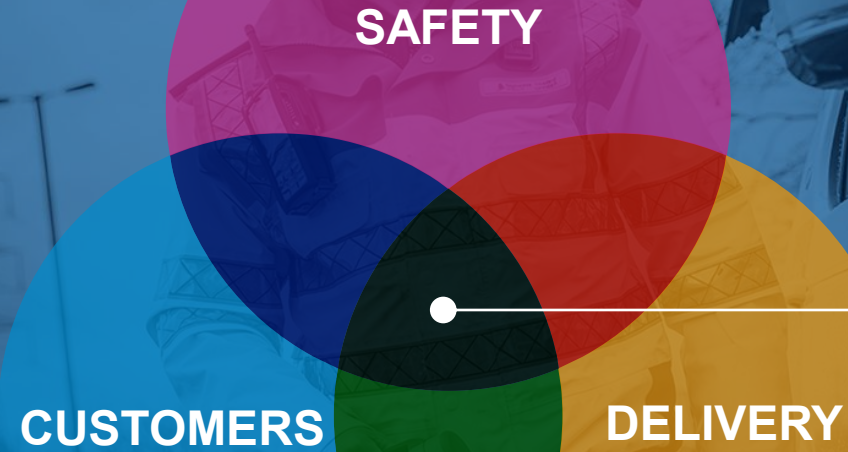


Regional maps

South West



**A focus on
safety, customers
and delivery**



Our three
imperatives underpin
everything we do

The Scale of the Challenge

- All built 50/60+ years ago
- Designed for 32 tonne trucks/much lower traffic volumes
- DBFO hand back
- £25+ billion RIS – 2026-2031 - significant renewals focus
- £200m Capital Renewals budget next year for the SW, that will grow over the coming years. We have a lot to do
- J22a/M32 Eastville/Wynhol viaduct – major projects/significant structures renewals
- UK PLC housing and investment growth, how do we play our part in supporting that?

Getting involved

- Safety
- Customer
- Delivery
- Public procurement – usual processes apply
- Our supply chain community
- Speak up, use the forum, pick up the phone

